

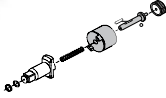
Impact Wrench 1/2"

CP6031 HABAK

Steel clutch housing for abusive and harsh environments



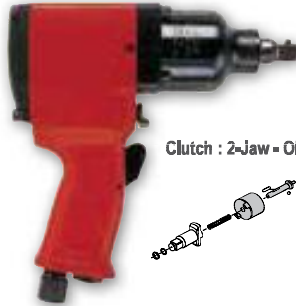
Clutch : 2-Jaw - Oil-Bath



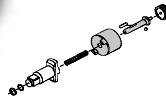
CP6041 HABAB

CP6041 HABAR

Hard hitting impact blows



Clutch : 2-Jaw - Oil-Bath



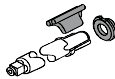
CP6540 RSR

CP6540 RSS

Excellent for very soft joint



Clutch: Rocking Dog



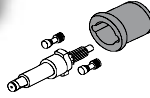
CP9541

CP9542

Fast rundown



Clutch: Pin - Oil-Bath



23 to 354 ft.lb (30 to 480 Nm)

FEATURES and BENEFITS

- High Torque/Weight ratio
- Double Dog clutch for smooth operation
- Durable Steel Clutch Housing for Heavy Duty and harsh applications
- Pistol Shape with a 3-piece construction engineered for easy maintenance
- Lightweight, only 5.8lbs (2.65kg)
- Ergonomic: Soft Grip for comfort and balanced for reduced strain
- Single handed fwd/rev operation



Clutch: Double Dog - Oil Bath

Available with Pin:
CP6500 RS

CP6500 RSR

JOINT TYPE

DRIVE	MODEL	DUTY	VERY SOFT	SOFT	MEDIUM	HARD	VERY HARD
1/2"	CP6041	***		x	x	x	
	CP6031	***		x	x	x	
	CP6500	**		x	x	x	
	CP6540	**	x	x	x		
	CP9541	*			x	x	x

Torque ranges should be used as a guide only. Final torque will depend on the joint, operating pressure and drive accessories.

MODEL	PART NUMBER	BOLT SIZE GRADE		DRIVE	CLUTCH TYPE	HANDLE STYLE	BLOWS PER MIN.	FREE SPEED.	WORKING TORQUE (FW)*		MAX. TORQUE (REV)**		NET WEIGHT		AIR CONS. ***		AIR INLET
		SAE 5 in.	ISO 8.8 mm						in.	ft.lb	Nm	ft.lb	Nm	lb	kg	cfm	
CP6031 HABAK	T021884	7/16	8-10	1/2	2-Jaw - Oil-Bath	P	2,200	10,000	23-75	30-102	130	176	3.3	1.50	25	12.0	1/4"
CP6041 HABAR	T022331	1/2 - 5/8	14-16	1/2	2-Jaw - Oil-Bath	P	1,700	6,500	40-250	55-339	375	509	6.2	2.80	40	18.9	1/4"
CP6041 HABAB	T021888	1/2 - 5/8	14-16	1/2	2-Jaw - Oil-Bath	P	1,700	6,500	40-250	55-339	375	509	6.2	2.80	40	18.9	1/4"
CP6500 RSR	T025216	5/8 - 3/4	18-20	1/2	Double Dog - Oil-Bath	P	1,320	6,400	103-354	140-480	525	710	5.8	2.65	25	11.8	1/4"
CP6500 RS	T025214	5/8 - 3/4	18-20	1/2	Double Dog - Oil-Bath	P	1,320	6,400	103-354	140-480	525	710	5.8	2.65	25	11.8	1/4"
CP6540 RSR	T025313	1/2 - 9/16	12-14	1/2	Rocking-Dog - Oil-Bath	P	1,320	6,400	40-120	54-162	310	420	6.2	2.80	22	10.4	1/4"
CP6540 RSS	T025314	1/2 - 9/16	12-14	7/16 Hex.	Rocking-Dog - Oil-Bath	P	1,320	6,400	40-120	54-162	310	420	6.2	2.80	22	10.4	1/4"
CP9541	615 190 9541	7/16 - 3/4	16-18	1/2	Pin - Oil-Bath	P	1,100	8,900	25-310	34-420	445	603	5.5	2.50	14	6.6	1/4"
CP9542	615 190 9542	7/16 - 3/4	16-18	1/2	Pin - Oil-Bath	P	1,100	8,900	25-310	34-420	445	603	5.5	2.50	14	6.6	1/4"

All models: Hose int. 3/8" (10mm) - @90 PSI (@6.3 Bar).

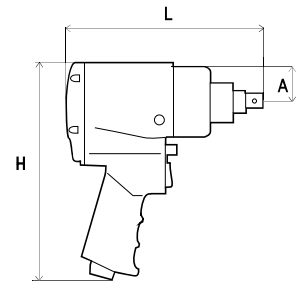
*Values @90 PSI (@6.3 bar) - 4 sec. **Values @90 PSI (@6.3 bar) - 10 sec. *** Values at free speed.

Dimensions and Accessories



DIMENSIONS

MODEL	DIMENSIONS					
	L		H		SIDE TO CENTER - A	
	in.	mm	in.	mm	in.	mm
CP6060 ...	7.6	194	9.8	250	1.46	37
CP9561	8.5	216	9.2	235	1.53	39



ACCESSORIES INCLUDED

DESCRIPTION	CP6060
Retainer ring with steel insert	C-155472



ACCESSORIES

SOCKETS

INDIVIDUAL SOCKETS (SAE & METRIC)



MODEL	DESCRIPTION	PART NO.
SAE* (in.)		
S615	3/4" DR STD Impact socket 1-5/16"	894 016 4146
S621D	3/4" DR Deep Impact socket 1-5/16"	894 016 4220
S624D	3/4" DR Deep Impact socket 1-1/2"	894 016 4223



MODEL	DESCRIPTION	PART NO.
METRIC (mm)		
S624M	3/4" DR STD Impact socket 24mm	894 016 4185
S627M	3/4" DR STD Impact socket 27mm	894 016 4188
S630M	3/4" DR STD Impact socket 30mm	894 016 4191
S632M	3/4" DR STD Impact socket 32mm	894 016 4193
S633M	3/4" DR STD Impact socket 33mm	894 016 4194
S627MD	3/4" DR Deep Impact socket 27mm	894 016 4256
S630MD	3/4" DR Deep Impact socket 30mm	894 016 4259
S632MD	3/4" DR Deep Impact socket 32mm	894 016 4261

SETS (SAE & METRIC)



MODEL	DESCRIPTION	PART NO.
SAE* (in.)		
SS6014	3/4" DR (14 pcs) Impact Set	894 016 4474
SS6014D	3/4" DR (14 pcs) Deep Impact Set	894 016 4475
SS6008D	3/4" DR (8 pcs) Deep Impact Set	894 016 7073

MODEL	DESCRIPTION	PART NO.
METRIC (mm)		
SS618	3/4" DR (8 pcs) Impact Set	894 016 4472
SS618D	3/4" DR (8 pcs) Deep Impact Set	894 016 4473

More socket sets available in the CP Impact Sockets catalog
 (*) Available in North America only



RETAINER RING with STEEL INSERT



SQUARE DRIVE	INSIDE DIAMETER OF RED RING		PART NO.
	in.	mm	
3/4"	1-1/4	31	C-155467
3/4"	1-7/16	36	C-155468
3/4"	1-5/8	41	C-134690
3/4"	1-3/4	44	C-134691
3/4"	2	51	C-155585
3/4"	2-1/4	57	C-155486

TUNE-UP KITS



MODEL	PART NO.
CP6060 ...	C137568
CP9561	C137569

GLOVES



DESCRIPTION	PART NO.
Impact Gloves: Large	894 015 8618
Impact Gloves: Extra Large	894 015 8619

LUBRICATION



OIL PROTECTO-LUBE FOR MOTOR	PART NO.
4oz. (0.12 l) - Air Tool Oil	CA149661
20.8oz (0.591 l) - Air Tool Oil	CA000046
1 Gal (3.8l) - Airoilene oil	P089507

GREASE PNEU-LUBE FOR CLUTCH	PART NO.
Pneu-Lube 100GM Tube	894 015 8455
Pneu-Lube Cartridge	894 015 8456
Pneu-Lube 7# Can	894 015 8457
Grease Gun+2 Nozzles	C098689



For Air Line accessory products, Balancers please see pages 78 to 93

