

GROUP 860 GAS TORCHES & BLOW LAMPS

Bullfinch Standard Torch Handles Only

No.1185 With comfortable, flat nylon handle strong enough to withstand rough usage. With standard needle valve.

No.1340 Specially designed with an immensely strong steel spring handle to stand up to the tough conditions of contractors' use. With standard needle valve.

No.1345 Extended Torch Handle Only Extra long handle with arm rest for extra comfort. Standard needle valve. Takes any of the standard burners and can be used in conjunction with the multiple burner adaptors Nos.1122 and 1123.

Overall length: 1060mm.



Product Number	Integral Hose	Handle End Weight	Order Code BUL-860	List Price/1	Offer Price/1
1185	4.8mm	210g	-1185L	£22.95	£21.80
1340	4.8mm	260g	-1340W	£23.00	£21.85
1345	4.8mm	800g	-1345X	£48.68	£46.25

Extension Tubes

For use between handle and burner for extending the reach. Can also be used in conjunction with multiple burner adaptors No. 1123.



Product Number	Length mm	Weight each	Order Code BUL-860	List Price/1	Offer Price/1
1112	305 (12")	150g	-1112D	£15.21	£14.45
1124	610 (24")	250g	-1124J	£18.52	£17.59
1140	1020 (40")	400g	-1140K	£24.69	£23.46

Multiple Burner Adaptors

Allows two or three burners to be attached to extended torch handle No.1345 or to other torch handles (the latter usually in conjunction with the extension tubes Nos.1112, 1124 and 1140 see above).

Length: 120mm.
Burner spacing: 125mm.



Product Number	Burner Adaptor	Weight each	Order Code BUL-860	List Price/1	Offer Price/1
1122	Twin (2)	170g	-1122G	£36.57	£34.74
1123	Trident (3)	250g	-1123H	£40.65	£38.62

Gas Supply

For use at high pressure (0.35 - 2 bar). Sizes up to No.1230 burner can be used off either propane and butane; and also off Gaz cylinders (using adaptor No.1070). Nos.1240 to 1270 burners should only be used off propane, and for continuous use the minimum size of cylinder is shown in the table.

Flashback Arrestors

These are NOT required for Bullfinch propane torches.

Burners for Standard Torches (Burner Only)

Robust, strong, reliable burners for a wide range of needs.

No.1472 Well defined flame.

No.1210 Small flame for narrow window sashes, central heating installations.

No.1220 Medium flame – for soldering and silver soldering.

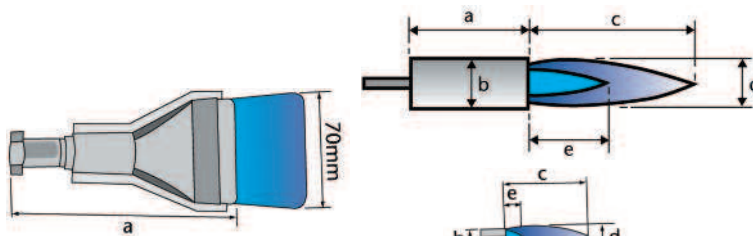
No.1230 General purpose flame.

No.1240 More powerful general purpose flame.

No.1250 Suitable for metal melting.

No.1260 Powerful flame for general engineering purposes.

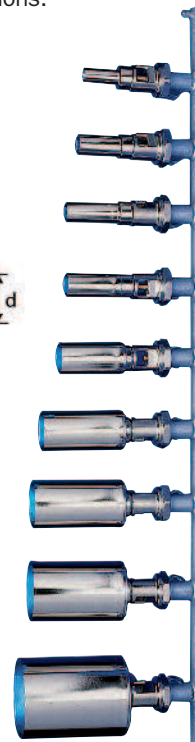
No.1270 Extremely powerful, for heavy soldering, forging, roofing, weed burning.



Product Number	Dimensions (mm)						Weight each	Order Code BUL-860	List Price/1	Offer Price/1
	Flame*		Burner							
	c	d	e†	a	b					
1472	105	8	42	74	16	73g	-1472K	£14.11	£13.40	
1210	140	14	55	83	16	95g	-1210P	£12.17	£11.56	
1220	155	21	80	83	19	100g	-1220Q	£12.49	£11.87	
1230	185	28	85	88	25	135g	-1230W	£13.00	£12.35	
1240	215	38	90	101	32	180g	-1240Y	£15.19	£14.43	
1250	270	50	120	109	38	213g	-1250B	£15.46	£14.69	
1260	350	62	155	110	48	222g	-1260C	£18.09	£17.19	
1270	420	74	175	120	63	380g	-1270E	£20.40	£19.38	

Notes: *The data are for the torch burning propane at 1 bar.

†To obtain gas consumption and heat input data at 2 bar, multiply these figures by 1.4.



Standard Torch Kits

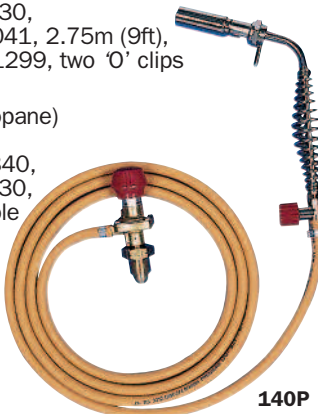
Torches assembled with hose, regulators and burners for immediate use.

No.110P (Propane)

Contents: handle No.1185, burner No.1230, Tinyreg No.1041, 2.75m (9ft), HP hose No.1299, two 'O' clips No.1324.

No.140P (Propane)

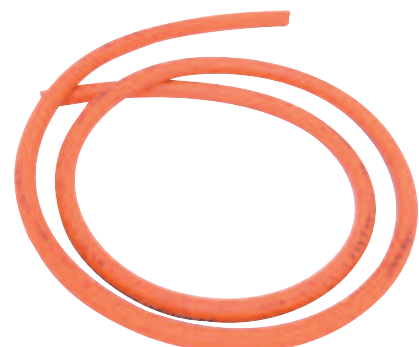
Contents: handle No.1340, burner No.1230, Tinyreg variable regulator No.1051, 2.75m (9ft), HP hose No.1299, two 'O' clips No.1324.



Product Number	Weight each	Order Code BUL-860	List Price/1	Offer Price/1
110P	1.61kg	-0110P	£59.95	£56.95
140P	1.22kg	-0140E	£62.94	£59.79

High Pressure Gas Hose

Suitable for replacing damaged hose. 4.8mm bore x 1m length. Conforms to BS3212: 1991/2/4.8.



Product Number	Weight each	Order Code BUL-860	List Price/1	Offer Price/1
1299		-1299F	£1.76	£1.67

Primus 2000 Cylinder Regulator

Primus 2000 regulator with knurled valve control. Standard burner for general-purpose applications. Full flame burner for large soldering, brazing and heating jobs.

Description	Order Code PRM-875	List Price/1	Offer Price/1
Regulator	-8716A	£18.50	£15.73
Standard Burner	-8719D	£10.50	£8.93
Full Flame Burner	-8725K	£12.80	£10.88



Regulator

Any of the Tinyregs or Bijou regulators. The No.1051 variable Tinyreg for propane is recommended to give best results from these torches.

Hose

4.8mm high pressure hose to BS 3212/2 (No.1299) only must be used, with suitable hose clips.

WELDING

Bullfinch Autotorch System

Automatic push-button, piezo-electric ignition plus easy to change burners. To **BS EN 731**.



No.2100 (Handle Only)
Strong, glass-filled nylon handle, styled for maximum comfort. Incorporates needle valve and piezo-electric ignitor. Takes any of the burners for Autotorch system 2 (but not for Autotorch brazing system).

Product Number	Integral Hose	Handle End	Weight	Order Code	List Price/1	Offer Price/1
2100	4.8mm	354g	-2100K	£45.33	£43.06	

Autotorch Propane Kits

Torches assembled with hose, regulators and burners for immediate use.

No.230P contents: handle No.2100, burner No.2105 Tinyreg variable regulator No.1051, 2.75m (9ft) HP hose No.1299, 2 'O' clips No.1324.



Product Number	Weight each	Order Code	List Price/1	Offer Price/1
230P	1.40kg	-0230G	£102.84	£97.70

Autotorch Brazing System

A portable bronze brazing system using only a single cylinder of propane. Automatic piezo-electric ignition plus interchangeable burners.

No.4100 Strong Glass-filled Nylon Handle
Styled for maximum comfort. Incorporates needle valve and piezo-electric ignitor. Takes any of the Autotorch brazing system burners (but not the Autotorch System 2 burners).



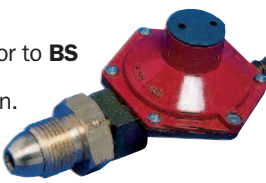
Product Number	Integral Hose	Handle End	Weight	Order Code	List Price/1	Offer Price/1
4100	4.8mm	366g	-4100B	£48.56	£46.13	

Regulators

No.4041 Brazing (not illustrated). Specially designed propane regulator to **BS 3016** giving a 4 bar preset outlet pressure. Robust brass construction.

No.330 Low Pressure: Compact low pressure regulator for propane. Conforms to **BS 3016**.

For industrial and domestic use and for use in caravans, boats and camping. Output pressure: 37m bar.



Product Number	Weight each	Order Code	List Price/1	Offer Price/1
4041	394g	-4041A	£29.10	£27.65
330	299g	-0330J	£5.50	£5.23

Screwed Hose Connector

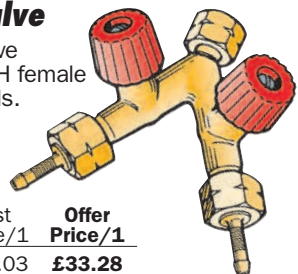
Bullfinch No.1021 screwed hose connector 3/8" BSP-LH female union x 4.8mm hose end.



Product Number	Integral Hose	Weight each	Order Code	List Price/1	Offer Price/1
1021	4.8mm	42g	-1021R	£2.41	£2.29

BSP Two Way Outlet Valve

The No.1263 two way outlet valve from Bullfinch has a 3/8" BSP - LH female union with two 4.8mm hose ends. Needle valves on each outlet. Gives two outlets off a Bijou regulator.



Product Number	Weight each	Order Code	List Price/1	Offer Price/1
1263	285g	-1263D	£35.03	£33.28

Autotorch Burners (Burner Only)

No.2102 Fine flame burner for localised heating.

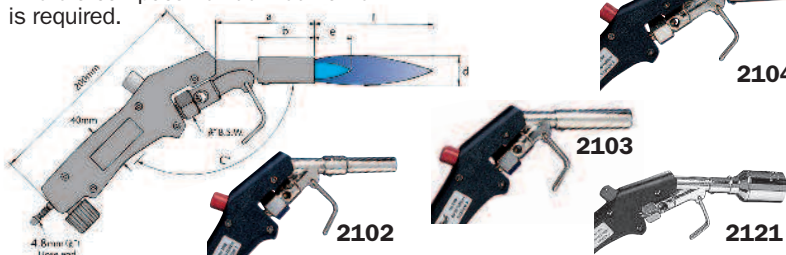
No.2103 Small flame burner for soldering small assemblies.

No.2104 Medium flame burner for heating, plumbing and engineering where a compact well defined flame is required.

No.2105 General purpose heating and soldering burner with a large well defined flame.

No.2106 More powerful flame for general use.

No.2121 Autotorch soft flame burner. Well spread flame for heat shrinking of plastics for cable jointing and other industrial plastics.



Product Number	Dimensions (mm)						Weight each	Order Code	List Price/1	Offer Price/1
	Flame*			Burner						
	d	e†	f	a	b	c				
2102	13	40	125	110	70	120	530g	-2102M	£27.52	£26.14
2103	15	40	150	100	70	120	520g	-2103N	£27.52	£26.14
2104	18	45	150	100	50	135	580g	-2104P	£27.52	£26.14
2105	30	45	150	100	50	135	580g	-2105Q	£27.52	£26.14
2106	40	40	250	145	100	135	530g	-2106R	£27.52	£26.14
2121	54	24	290	132	90	135	614g	-2121V	£28.72	£27.28

Notes:

*The data is for the torch burning propane at 1 bar. †To obtain gas consumption and heat input data at 2 bar, multiply these figures by 1.4.

Gas Supply

Propane or butane at high pressure (0.35 - 2 bar).

Cylinders

Any standard propane or butane cylinder (Gas cylinders using No.1070 adaptor).

Regulator

Any of the Tinyregs or Bijou regulators. The No. 1051 variable Tinyreg for

propane is recommended to give the best results from the torch.

Hose

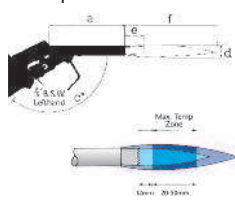
4.8mm high pressure hose to BS 3212/2 (No.1299) only must be used, with suitable hose clips.

Flashback Arrestors

These are NOT required for Bullfinch propane torches.

Autotorch Brazing Burners (Burner Only)

No.4103 giving the smallest, **No.4105** the largest, flames. The burners must be used at 4 bar pressure and should not be turned down. If a smaller flame is required a smaller burner must be used.



Flame Temperature

The hottest flame temperature zone begins approximately 12mm (1/2") from the end of the nozzle and extends for 20 to 50mm, depending upon burner size. Maintain these distances from the work-piece for maximum heating effect.

Product Number	Dimensions (mm)						Weight each	Order Code	List Price/1	Offer Price/1
	Flame			Burner						
	d	e	f	a	c	c°				
4103	15	20	110	110	135	534g	-4103C	£28.87	£27.43	
4104	20	30	170	130	135	537g	-4104D	£28.87	£27.43	
4105	30	40	220	145	135	546g	-4105E	£28.87	£27.43	

Gas Supply & Regulator

The torch must be used with propane only at 4 bar pressure. We recommend the brazing regulator No.4041 which is already fitted to the kit.

Cylinders

Any standard propane cylinder.

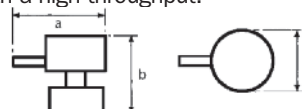
Hose

4 - 8mm high pressure hose to BS 3212/2 (No. 1299) only must be used, with suitable hose clips.

Flashback Arrestors

These are NOT required for Bullfinch propane torches.

High performance high pressure regulators to **BS 3016**, operating over temperature range 20°C to +50°C. Tinyregs: **No.1051**. Any can supply enough gas for any single Bullfinch product. Tinyregs pre-set: **No.1041**, Bijou: **No.1465** and **No.1466** - high volume compact regulators for propane. Ideal for supplying two or more appliances and those with a high throughput.



Product Number	Output Bar	Hose End	Dimensions(mm)			Weight each	Order Code	List Price/1	Offer Price/1
			a	b	c				
1041	1	4.8	68	93	43	318g	-1041X	£21.60	£20.52
1051	0.35-2	4.8	68	115	43	330g	-1051A	£23.80	£22.61
1465	0.35-2	6.3, 8, 4.8	106	125	57	545g	-1465G	£29.99	£28.49
1466	1	6.3, 8, 4.8	106	105	57	480g	-1466H	£32.99	£31.34

GROUP 860 GAS TORCHES & BLOW LAMPS

SIEVERT® Blow Torches

Frequently used by professionals and do-it-yourself. For soft soldering, small brazing, paint stripping and other heating applications.

P229501

Work pressure: 1bar.
Gas consumption: 70g/h .
Effect: 900W.

Use only with Powergas cartridge P2204CA.

P229301X

P2294 & P229301X

Burner diameter: 17mm.
Pressure: 3bar.
Gas consumption: 180g/h.
Effect: 2.3kW.
Soft soldering max Ø: 28mm .
Brazing max Ø: 12mm.

For use with Powergas cartridge P2203CA.

P2294

P229501

Product Number	Description	Order Code	Offer Price/1
P2294	Torch	SIV-860-0050K	£25.17
P229301X	Torch	-0080K	£23.43

Product Number	Description	Order Code	Offer Price/1
P229501	Torch	-0070K	£53.33

Micro Torch - Refillable

430000

Gives a precise and adjustable flame ideal for cooking, lighting barbecues, candles and also small soldering jobs. Hi-tech polymer construction.

Automatic ignition.

Flame temperature 1300°C, burning time per fill 60min.

Gas Refill

SIV-860-0010K
£3.38

Product Number	Description	Order Code	Offer Price/1
430000	Torch	-0060K	£30.82
E0509012	Refill	-0010K	£3.38

Disposable Cartridges

P2203CA 300ml (175g) and **P2204CA** 600ml (336g).

Disposable cartridges with self closing valves, contain a gas mixture of 35% propane and 65% butane.

P2210CA

Pierceable cartridge, contains 100% butane. 350ml (190gm).

Product Number	Refill Size (ml)	Order Code	Offer Price/1
P2203CA	300	-0020K	£3.33
P2210CA	350	-0030K	£1.93
P2204CA	600	-0040K	£5.80

ROTHENBERGER

Super-Fire 2 Brazing Torch

The Super-Fire 2 soldering and brazing torch is the result of many years experience and provides the highest standards in concentrating high temperature for fast and effective soldering and brazing in the plumbing, heating, refrigeration and air conditioning trades.

Specification: Instant automatic ignition. Guaranteed anti-flare. Long life piezo ignitor. Solid die cast torch body. Fine filtered jet. Professional performance. Works in any position - even upside down.

Product Number	Description	Order Code	Offer Price/1
3.5644X	Super-Fire Brazing Torch	RBC-566-3564G	£75.72

Bullfinch Unilow Furnace

The Bullfinch No.1365 Unilow Furnace is robustly designed with a wide low frame that gives great stability and safety. It incorporates an advanced design of air intake adjustment to give a wide range of flames from vigorous to soft - and more precise control of the heat.

The burner design prevents jets becoming blocked by spillage, stripping, bbq lighters and tile/label removal.

Product Number	Description	Order Code	Offer Price/1
1365	Unilow Furnace	BUL-860-1365Z	£119.26

Soldering Iron Kit

3380

Comes complete with gas cartridges, tips and a deluxe metal carrying case.

Kit contents:

- 1x PSI 3380 soldering iron
- 2x gas cartridges
- 1x copper tip (700250)
- 2x jet orifices
- 1x carrying case



Product Number	Description	Order Code	Offer Price/1
3380	Soldering Iron Kit	SIV-860-0090K	£227.00

Soldering/Brazing Kits

2435

Reliable automatic Piezo ignition. Trigger on/off function. Approved long handle for US connection.

Kit contents:

- 2x gas cannisters.
- 1x 8706 cyclone burner.
- 5x interchangeable burners.
- Carrying case.



Product Number	Description	Order Code	Offer Price/1
2435	Propane Kit	SIV-860-0100K	£128.00
	Ultra Gas Kit	-0110K	£133.50

Gas Cartridges

To suit Sievert soldering and brazing tools.



Product Number	Gas Cartridge	Order Code	Offer Price/1
2202	110g Ultra Gas	SIV-860-0120K	£4.80
2206	400g Ultra Map	-0130K	£16.37
2208	400g Propane	-0140K	£14.20

WELDING



GoGas appliances are competitively priced and backed up by a three year guarantee. Designed to comply with the British and European standard **BS EN521**, all GoGas blowlamps and gas torches are safety checked and trial burned. All GoGas gas cartridges comply with the **British and European Standard BS EN417**.

Pro Torch Set

TP2062

A durable high power, high temperature (up to 1500°C) gas torch. Ideal for skilled plumbing, brazing and intricate soldering work. Stable neck stand for hands-free use. Instantly flare safe brass burner for use at any angle. Supplied with large power burner attached and a spare fine flame burner for intricate work.



Model Number	Type	Order Code GGS-875	Offer Price/1
TP2062	Torch	-7062V	£22.69

Auto Blowlamp

AT2071

Lightweight and versatile. Durable brass control tap. Advanced burner system. Can be used at any angle without flaring. Instant push button ignition. Complete with 2175 cartridge and stabilising base.

General Purpose Blowlamps

Produces a rugged flame ideal for paint stripping or plumbing. Unit is flare safe after 1min. Ergonomically moulded handle.

GB2070 Blowlamp

Complete with 2175 cartridge and base.

GB2095 Pierceable Cartridge Blowlamp

A general purpose pierceable cartridge blowlamp. Unit is flare safe after 1min and operates directly from a Type 200 pierceable 190g butane/propane mix cartridge.



GB2070



AT2071

GB2095

Model Number	Type	Order Code GGS-875	Offer Price/1
AT2071	Blowlamp	-2420R	£23.52
GB2070	Blowlamp	-3610H	£10.58
GB2095	Blowlamp	-3630K	£15.12

Auto Ignition Torches

AP2010 Auto Power Torch

Powerful instantly flare safe gas torch for the professional plumber, with push button auto-ignition and advanced gas control system which gives consistent performance, while moulded neck stand allows horizontal burning. Gas cartridges fitted with standard type threaded self-sealing safety valves. Complete with 2350 cartridge and base.



Model Number	Type	Order Code GGS-875	Offer Price/1
AP2010	Torch	-2100M	£22.69

Multi Torches & Blowlamps

A multi-purpose gas torch ideal for soldering, hobby or intricate work. Unit is flare safe after 1min and is fitted with an angled burner for easier access to tighter spaces.



Multi-Purpose Gas Torch

MT2055

Complete with 2175 cartridge and stabilising base.

MT2055

Model Number	Type	Order Code GGS-875	Offer Price/1
MT2055	Torch	-4425M	£7.56

Auto Start Power Torch

AP2010H

A durable high power, high temperature (up to 1500°C) gas torch. Instantly FLARESAFE, use at any angle. Auto start Piezo ignition. Stable neck stand allows for hands-free use. Stability base included. Ideal for skilled plumbing, soldering and brazing work. Joins and repairs a range of metals. See the range of GoSystem accessory rods. Safety checked and test burned. For use with G2350 or 2175, GoSystem gas cartridge.



Model Number	Type	Order Code GGS-875	Offer Price/1
AP2010H	Auto Start	-2100N	£20.95

Gas Cartridges

Go System Butane and Butane/Propane gas cartridges to suit a variety of burners. Conform with **BS EN 417**.



Model Number	Gas Type	Cartridge Size	Order Code GGS-875	Offer Price/1
2289	Butane	277g	-1100E	£2.87
2175	But/Prop	170g	-1020B	£2.64
2350	But/Prop	350g	-1150F	£3.02
2190	But/Prop	190g	-1040D	£1.13

ROTHENBERGER

Disposable Gas Cylinders

Propane Gas Cylinder - 3.5535

Disposable propane gas cylinder. Ideal for jet torch, quick fire, super fire 2 and micro fire.

MAP/Pro Gas Cylinder - 3.5536

Based on a stabilised mixture of methylacetylene (propyne) and propadiene. MAPP gas is safer than acetylene; There is no 15psi limit and it can be used on board ships and in mines. Delivers higher temperatures than propane. Although acetylene has a higher flame temperature (3160°C, 5720°F), MAPP has the advantage that it requires neither dilution nor special container fillers during transport, allowing a greater volume of fuel gas to be transported at the same given weight, and it is much safer in use.



Gas Type	Cartridge Size	Order Code RBC-566	Offer Price/1
Propane	400g	-3535R	£8.70
MAP/Pro	400g	-3566H	£13.54

Burner Nozzles

To supplement the use of GoGas torches and blowlamps, each packed in reusable storage wallets.

AB2404 Power Torch Paint Burner



AB2405 Power Torch Fine Flame Burner

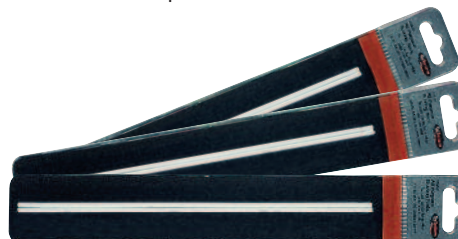


Model Number	Order Code GGS-875	List Price/1	Offer Price/1
AB2405	-2014E	£3.16	£2.75

Brazing Rods

For joining and repairing most metals. 'Retail' packed in reusable storage wallets.

- AR2422** Copper to Copper 250 x 2.0mm.
- AR2423** Aluminium Repair 250 x 4.0mm.
- AR2424** All Purpose 250 x 3.5mm.



Model Number	Pack Quantity	Order Code GGS-875	Offer Price/Pk
AR2422	4	-2221D	£1.51
AR2423	2	-2222E	£3.78
AR2424	2	-2223F	£3.78

CONTRACT PRICES AVAILABLE FOR VOLUME PURCHASES

All Prices Exclude V.A.T. © 2014

WELDING