







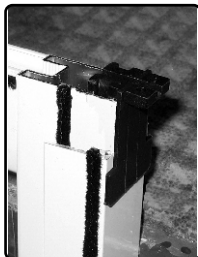
On Site Fitting instruction for 3 panel Stacker Door

Kit contains

Items	Description	Quantity
	Frame Factory fitted sill tread and fix panel adaptor	1
	Panels A-Fixed panel B-Sliding panel C-Sliding panel	1 1 1
	Top fix block	1
	63X8# Pan head Stainless Steel	1
	12X8# Pan head Stainless Steel	4
	20X6# Csk head Stainless Steel	2

Installations

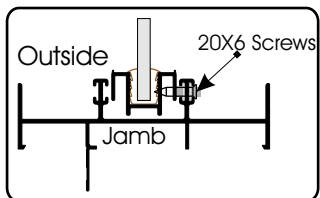
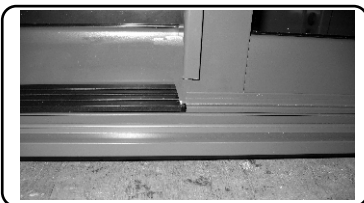
- 1- Make sure the frame installed onsite is square and level.
- 2- Insert Top fix block into top of the Interlock on Fix panel (A)



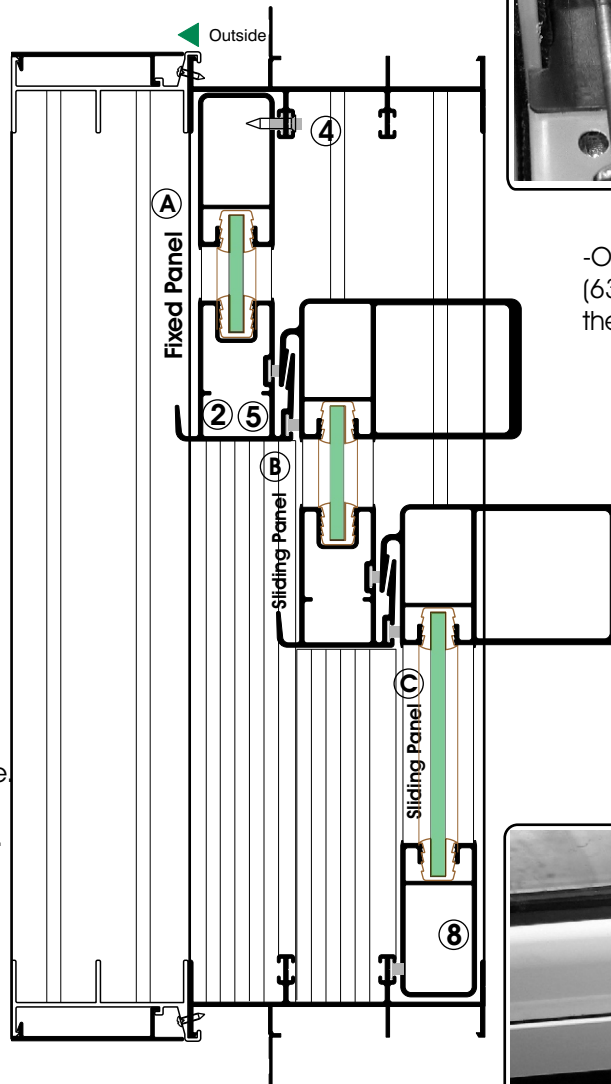
- 3- Place the Fix panel(A) onto the frame
- Slip the top panel into the middle channel of the Head frame.



- Position the bottom panel inside the fix channel on the sill (Bottom frame).
- Check the bottom interlock to make sure the fix panel fitting in.

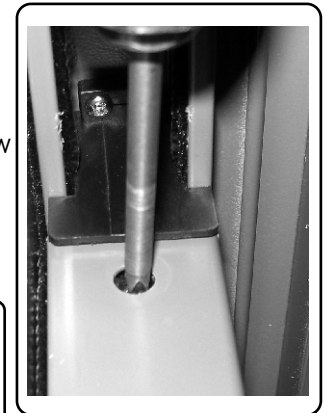


- 4 - On the inside, place screws (20x6) along the Jamb, approx. 500mm from top and bottom, between the mohair to fix panel to the Jamb .

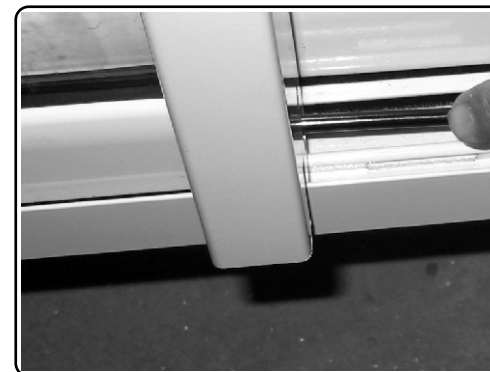


- 5-On top of the interlock, lift the Top fix block to touch the Head frame.
Use screw (12X8) to secure it to frame.

- On top of the interlock, use screw (63X8) to secure Top fix block to the panel.



- On bottom of the interlock, use screws (12X8) to secure bottom interlock to the sill both inside & outside.



- 6- Place the sliding panel "B" into frame in the middle track.

- 7-Place the sliding panel "C" into frame on the inside
- If required,
Adjust the rollers from either end of sliding panel with phillips screwdriver.

- 8- Fitting the door lock handle as in Lock fitting instruction