

 **CRESTLITE®**



**TREND®**  
WINDOWS 

& DOORS

**Commercial Series**

# contents

Trend® Windows & Doors	2
<b>Crestlite® Windows</b>	
200 Centre Glazed Double Glazed	3
300 Centre Glazed	5
350 Awning	7
350 Casement	9
352 Awning	11
352 Casement	13
480 Sliding	15
600 Front Glazed	17
650 Inline Awning	19
650 Overlap Awning	21
<b>Crestlite® Doors</b>	
Viscount Sliding & Stacker	23
Windsor Sliding & Stacker	25
Hinged	27
Pivot	29
<b>Thermashield®</b>	31
<b>SoundMizer® Acoustics</b>	32
<b>Product Installation</b>	33
<b>Guarantee</b>	33
<b>Care &amp; Maintenance</b>	34

Trend® National Customer Assistance Centre

(between 8:30am - 4:30pm EST, M-F)

**13 72 74**

[www.trendwindows.com.au](http://www.trendwindows.com.au)

email: [info@trendwindows.com.au](mailto:info@trendwindows.com.au)

NOTE: Hardware displayed in photography may vary from state to state due to supplier or availability. Trend® Windows & Doors Pty Ltd reserve the right to make changes to product(s) without notice.

# trend® windows & doors

Create a welcoming ambience and sense of style in your home with Trend® Windows & Doors.

Choose from the largest, most comprehensive range in Australia with more design and performance features than ever before.

Trend® offers experience, quality and service that you can rely on. Trend® understands that choosing the right windows and doors for your home is critical, so here are some pointers to assist you.

## Quality & Durability

Windows and doors should be strong and well made, providing you with many years of effortless performance. All Trend® windows and doors carry the Australian Window Performance label.

Trend® will inspire you with the options available and provide you with the expertise to create a perfect environment in your home.

## Design & Style

Colour, style, size and shape of windows and doors enhance the charm and character of your home, both inside and out. You can create exactly the look and feel you want for your home, with just the right amount of natural light.

## Energy Efficiency

Enhancing the comfort of your home depends significantly on the amount of ventilation and insulation provided by your windows and doors.

A cool breeze in summer is refreshing and staying warm in winter is essential. With Australia's diverse climate it is important to consider the best design options for your location and individual needs.

Trend® can offer advice on how to save money on energy costs by choosing the appropriate sash style, glass type and style for your particular climatic conditions.

## Safety & Security

Your family needs to feel safe and secure, so it is essential to use locks and frames that will deter unwanted entry and select the right type of glass.

Trend® can assist you with these decisions as Trend® products adhere to the highest standards of safety and security.

## Your Individual Needs

You may have specific needs, such as arches, glazing bars or bay windows or a specific glass or hardware type.

Trend® provides you with complete design flexibility.

## Bushfire Protection

Xtreme® bushfire protection that has been tested by CSIRO to BAL-40, which is fully compliant to AS1530.8.1 within AS3959-2009 is available.



Members of the Australian Window Association



# 200 centre glazed double glazed

**Framing**

Crestlite® 200 Centre Glazed Double Glazed frame allows for large fixed lite applications. The frame dimension is 50mm x 102mm.

**Energy Efficiency**

Thermashield® systems are available in various WERS ratings and glazing styles. The frame contains deep pockets allowing for greater overlapping of glass (from 18 to 25mm insulating glass units (IGU)). Glazing is also enhanced by an optional secure captive wedge.

**Acoustic Options**

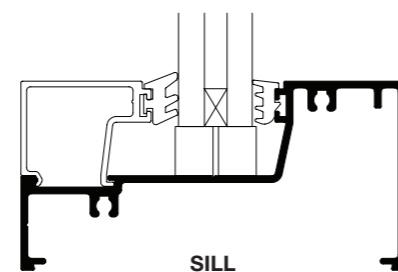
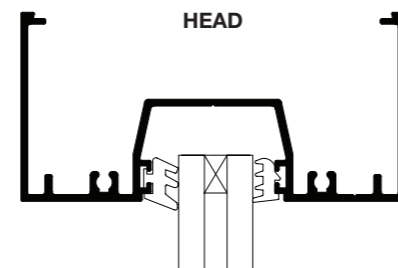
SoundMizer® acoustic solutions are available in various STC ratings.

**Frame Adaptability**

Crestlite® Hinged/Pivot Doors and Awning sashes are designed to be adapted to this frame.

**Finishes**

Wide range of powdercoat finishes are available (including warranty powders and anodised options).



# 300 centre glazed

**Framing**

Crestlite® 300 Centre Glazed commercial suite allows for large fixed lite applications. The frame dimension is 45mm x 102mm.

**Energy Efficiency**

Thermashield® systems are available in various WERS ratings and glazing styles. The frame contains deep pockets allowing for greater overlapping of glass (from 5mm-12.38mm thickness). Glazing is also enhanced by an optional secure captive wedge.

**Acoustic Options**

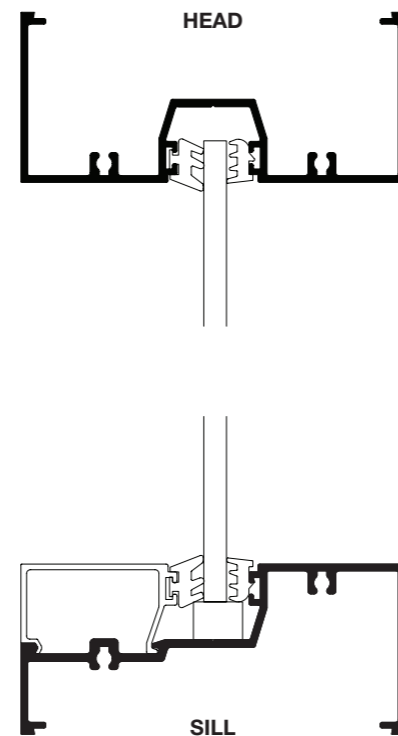
SoundMizer® acoustic solutions are available in various STC ratings.

**Frame Adaptability**

Crestlite® Hinged/Pivot Doors and Awning sashes are designed to be adapted to this frame.

**Finishes**

Wide range of powdercoat finishes are available (including warranty powders and anodised options).





# 350 awning window

**Framing**

Crestlite® 350 Awning Window has a sash of 62mm that allows for large operable applications. The overall frame width is 45mm x 102mm.

**Energy Efficiency**

Thermashield® systems are available in various WERS ratings and glazing styles. Glazing is available in 5mm toughened glass through to 25mm double glazed units. Large single lite windows are available.

**Acoustic Options**

SoundMizer® acoustic solutions are available in various STC ratings.

**Flyscreen**

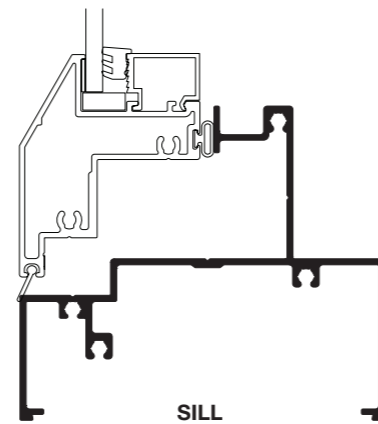
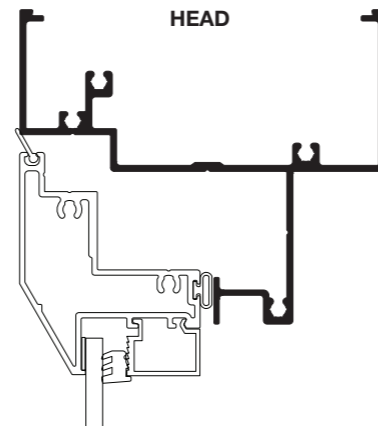
Intergrated flyscreen is available as standard. Flyscreen is mounted back on the inside so that it can be removed for cleaning.

**Locks**

Operator can be supplied as key lock or non-key lock. Foldaway operator handle allows for overhanging curtains or blinds.

**Finishes**

Wide range of powdercoat finishes are available (including warranty powders and anodised options).



# 350 casement window

**Framing**

Crestlite® 350 Casement Window has a sash of 62mm that allows for large operable applications. The overall frame width is 45mm x 102mm.

**Energy Efficiency**

Thermashield® systems are available in various WERS ratings and glazing styles. Glazing is available in 5mm toughened glass through to 25mm double glazed units.

**Acoustic Options**

SoundMizer® acoustic solutions are available in various STC ratings.

**Sash**

Sash profile width is 62mm. The 90° opening sash allows for easy cleaning and greater ventilation. Sash glass can be upgraded without changing sash.

**Flyscreen**

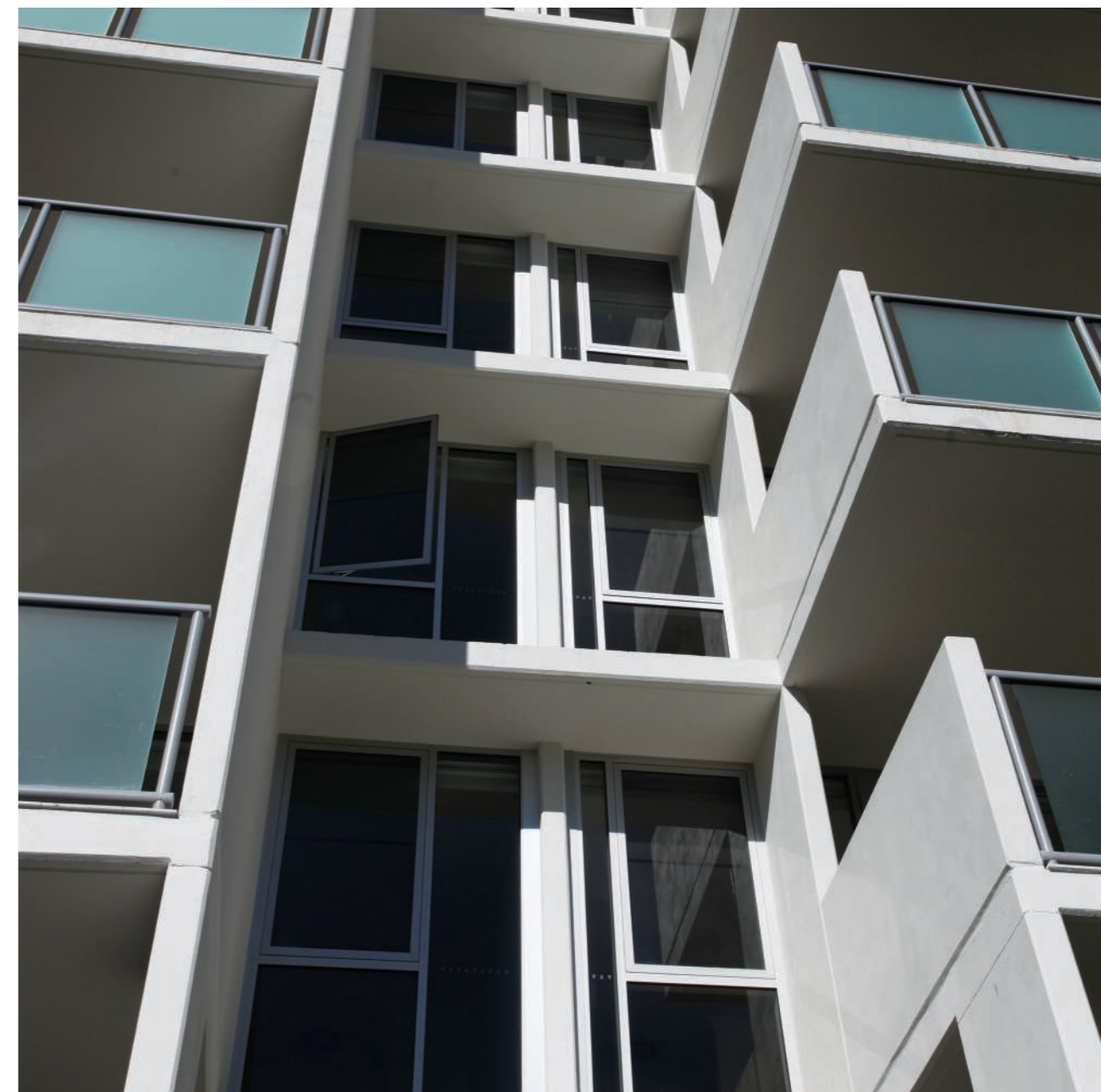
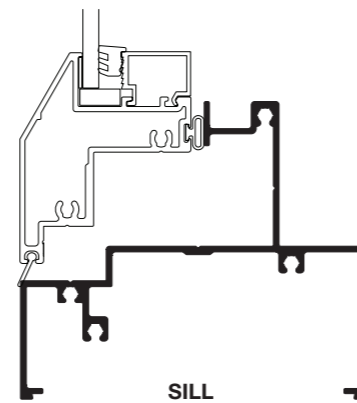
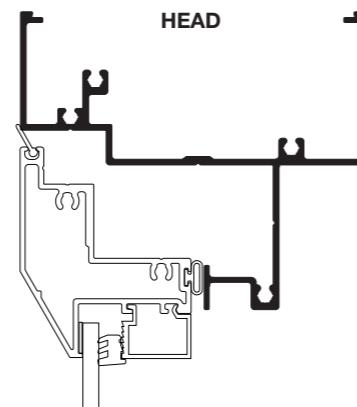
Intergrated flyscreen is available as standard. Flyscreen is mounted back on the inside so that it can be removed for cleaning.

**Locks**

Operator can be supplied as key lock or non-key lock. Foldaway operator handle allows for overhanging curtains or blinds.

**Finishes**

Wide range of powdercoat finishes are available (including warranty powders and anodised options).





# 352 awning window

**Framing**

Crestlite® 352 Awning Window has a sash of 62mm that allows for large operable applications. The overall frame width is 25mm x 102mm.

The frame has been designed to have any of the Quantum XP® awning sash inserted into the frame in either single or double glazed configurations.

**Energy Efficiency**

Thermashield® systems are available in various WERS ratings and glazing styles. Glazing is available in 5mm toughened glass through to 25mm double glazed units. Large single lite windows are available.

**Acoustic Options**

SoundMizer® acoustic solutions are available in various STC ratings.

**Flyscreen**

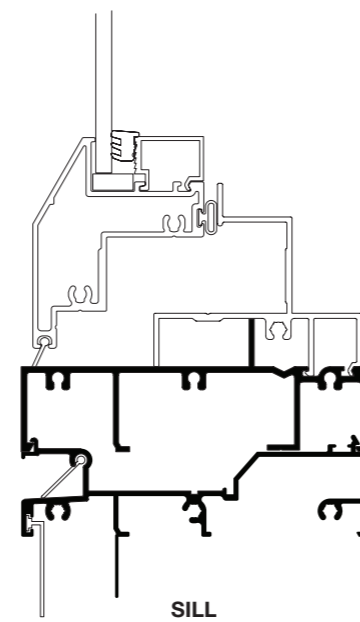
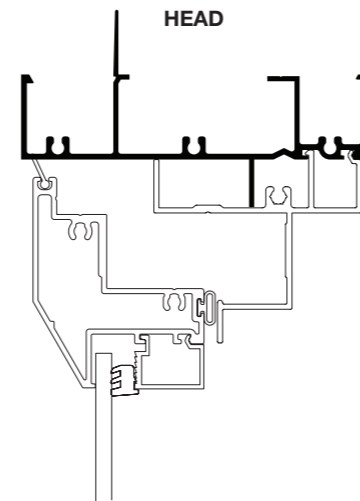
Intergrated flyscreen is available as standard. Flyscreen is mounted back on the inside so that it can be removed for cleaning.

**Locks**

Operator can be supplied as key lock or non-key lock. Foldaway operator handle allows for overhanging curtains or blinds.

**Finishes**

Wide range of powdercoat finishes are available (including warranty powders and anodised options).





# 352 casement window

**Framing**

Crestlite® 352 Casement Window has a sash of 62mm that allows for large operable applications. The overall frame width is 25mm x 102mm.

The frame has been designed to have any of the Quantum XP® casement sash inserted into the frame in either single or double glazed configurations.

**Energy Efficiency**

Thermashield® systems are available in various WERS ratings and glazing styles. Glazing is available in 5mm toughened glass through to 25mm double glazed units. Large single lite windows are available.

**Acoustic Options**

SoundMizer® acoustic solutions are available in various STC ratings.

**Flyscreen**

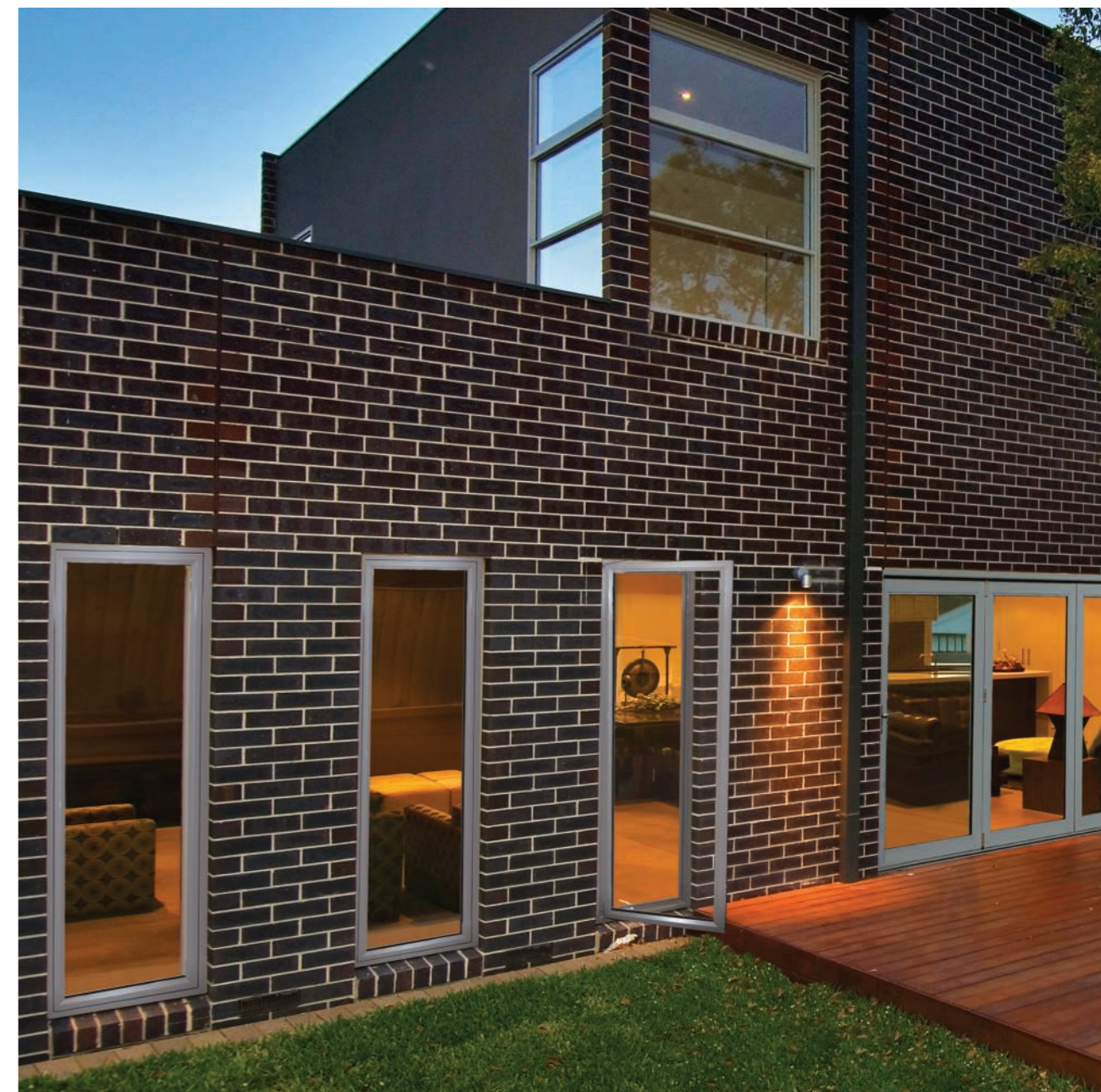
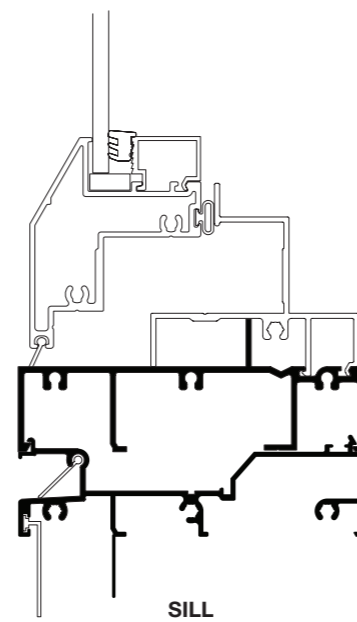
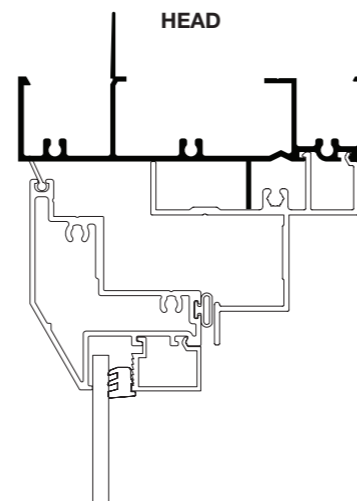
Intergrated flyscreen is available as standard. Flyscreen is mounted back on the inside so that it can be removed for cleaning.

**Locks**

Operator can be supplied as key lock or non-key lock. Foldaway operator handle allows for overhanging curtains or blinds.

**Finishes**

Wide range of powdercoat finishes are available (including warranty powders and anodised options).





# 480 sliding window

**Framing**

Crestlite® 480 Sliding Window offers a commercial look for modern developments, shop fronts or apartments. The overall frame width is 50mm x 102mm.

**Energy Efficiency**

Thermashield® systems are available in various WERS ratings and glazing styles. Glazing is available from 4mm single glazing with up to 18mm insulating glass units (IGU).

**Acoustic Options**

SoundMizer® acoustic solutions are available in various STC ratings.

**Locks**

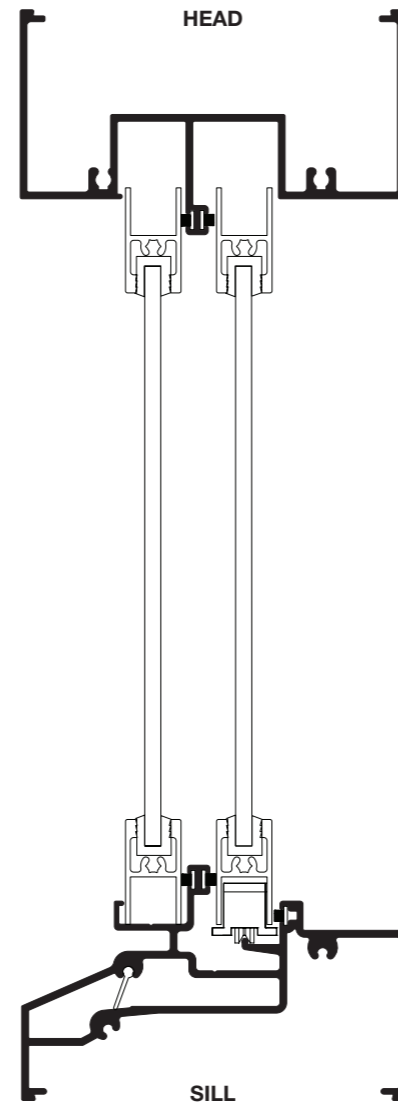
Key lock, non-key lock and vent lock options are available.

**Flyscreens**

Flyscreen options are available.

**Finishes**

Wide range of powdercoat finishes are available (including warranty powders and anodised options).



# 600 front glazed

**Framing**

The Crestlite® Front Glazed commercial suite offers a clean glazing line to the exterior aspect. The frame allows for large fixed lite applications for greater viewing area. The frame dimension is 50mm x 102mm.

**Energy Efficiency**

Thermashield® systems are available in various WERS ratings and glazing styles. The frame contains deep pockets allowing for greater overlapping of glass (from 5mm-12.38mm thickness). Glazing is also enhanced by an optional secure captive wedge. Frame can be glazed with a top or bottom bead. Glazing can be achieved internally or externally.

**Acoustic Options**

SoundMizer® acoustic solutions are available in various STC ratings.

**High Pascal Rating**

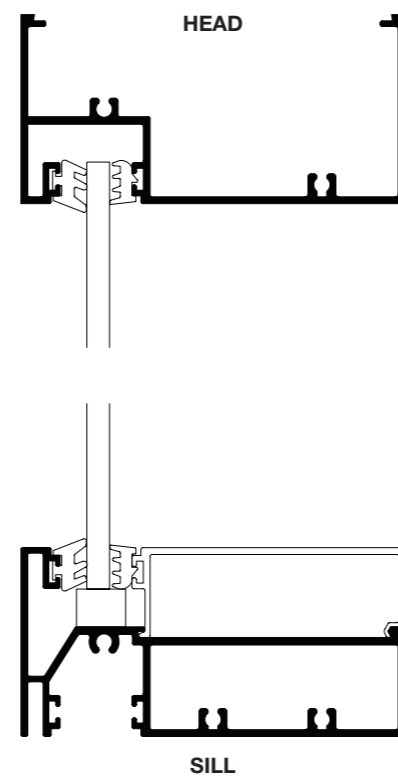
Crestlite® 102mm Front Glazed commercial suite contains a concealed drainage hole. It also features additional front screw holes for stronger frame fixing in high-wind areas.

**Frame Adaptability**

Crestlite® Hinged/Pivot Doors and Awning sashes are designed to be adapted to this frame.

**Finishes**

Wide range of powdercoat finishes are available (including warranty powders and anodised options).





# 650 inline awning window

**Framing**

Crestlite® Inline Awning is available in front pocket framing section and is adaptable with centre pocket framing. The 38mm sash incorporates a flush double sealing system on the frame. The sash is flush to the frame. The overall frame width is 50mm x 102mm.

**Energy Efficiency**

Thermashield® systems are available in various WERS ratings and glazing styles. Glazing is available in 6mm toughened glass through to 25mm double glazed units. Large single lite windows are available.

**Acoustic Options**

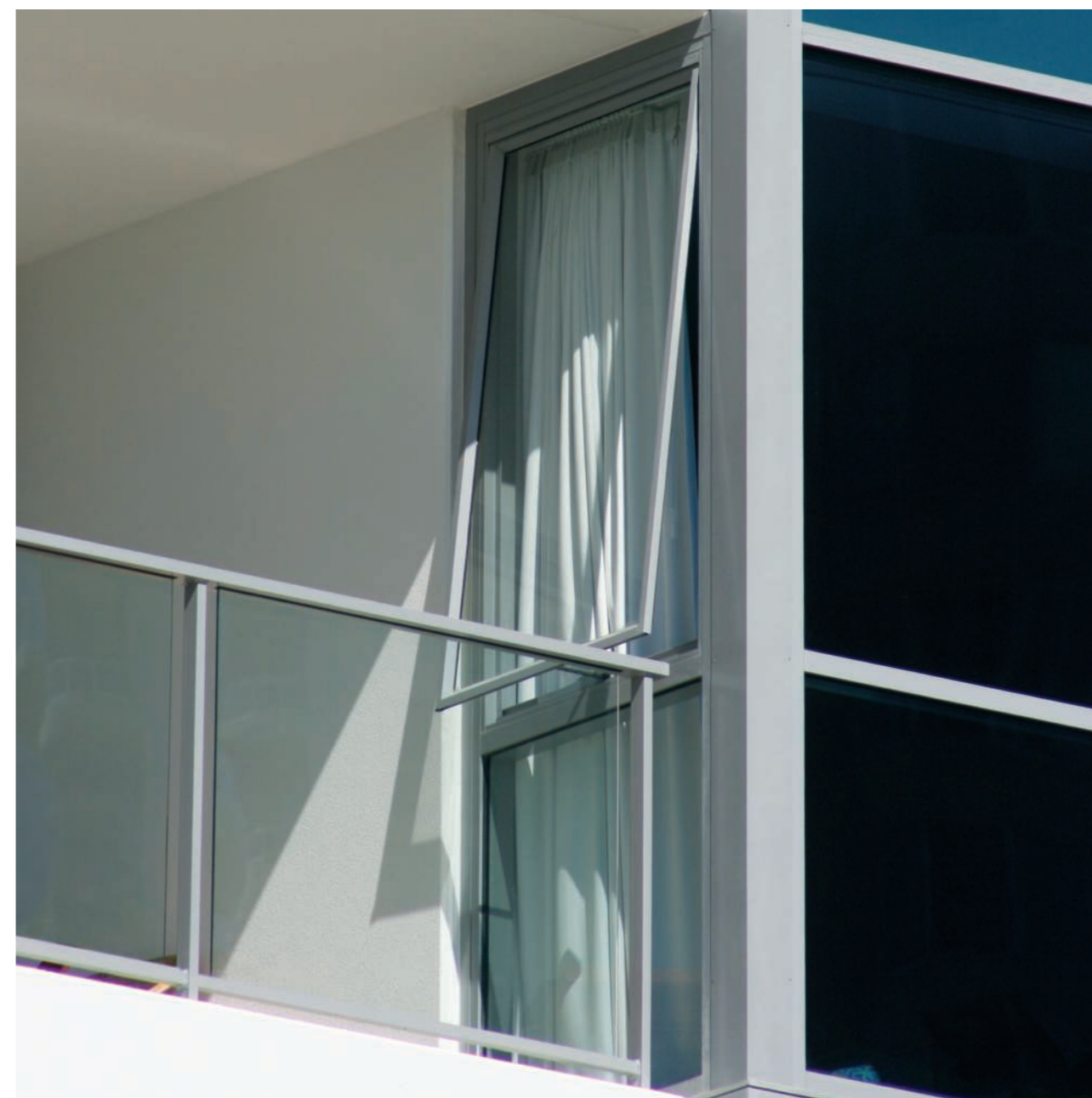
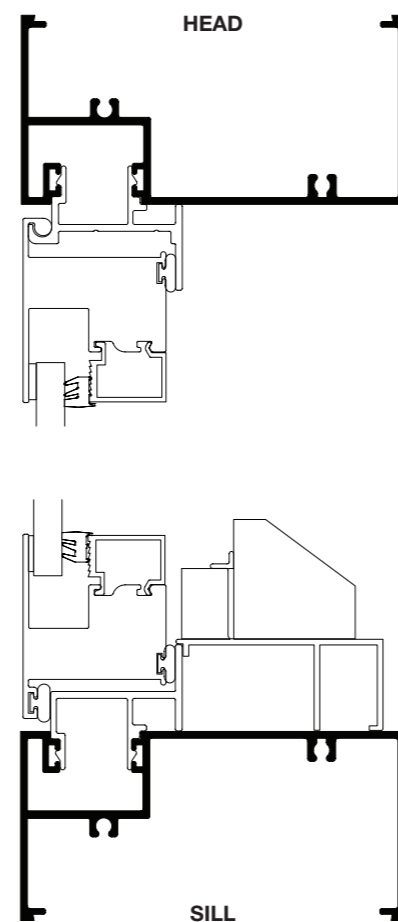
SoundMizer® acoustic solutions are available in various STC ratings.

**Hardware**

Stainless steel chain winder is standard. The robust mechanism is mounted securely to the frame with concealed 2-point fixing. Keyed lock is supplied as standard for added security. Restricted openings are also standard for high-rise situations.

**Finishes**

Wide range of powdercoat finishes are available (including warranty powders and anodised options).



# 650 overlap awning window

**Framing**

Crestlite® Overlap Awning is available in front glaze framing section and is adaptable with centre pocket framing. The 38mm sash incorporates a double sealing system on the frame to improve high weathering performance and the sash overlaps the exterior frame for increased performance as well as sealing. The overall frame width is 50mm x 102mm.

**Energy Efficiency**

Thermashield® systems are available in various WERS ratings and glazing styles. Glazing is available in 6mm toughened glass through to 25mm double glazed units. Large single lite windows are available.

**Acoustic Options**

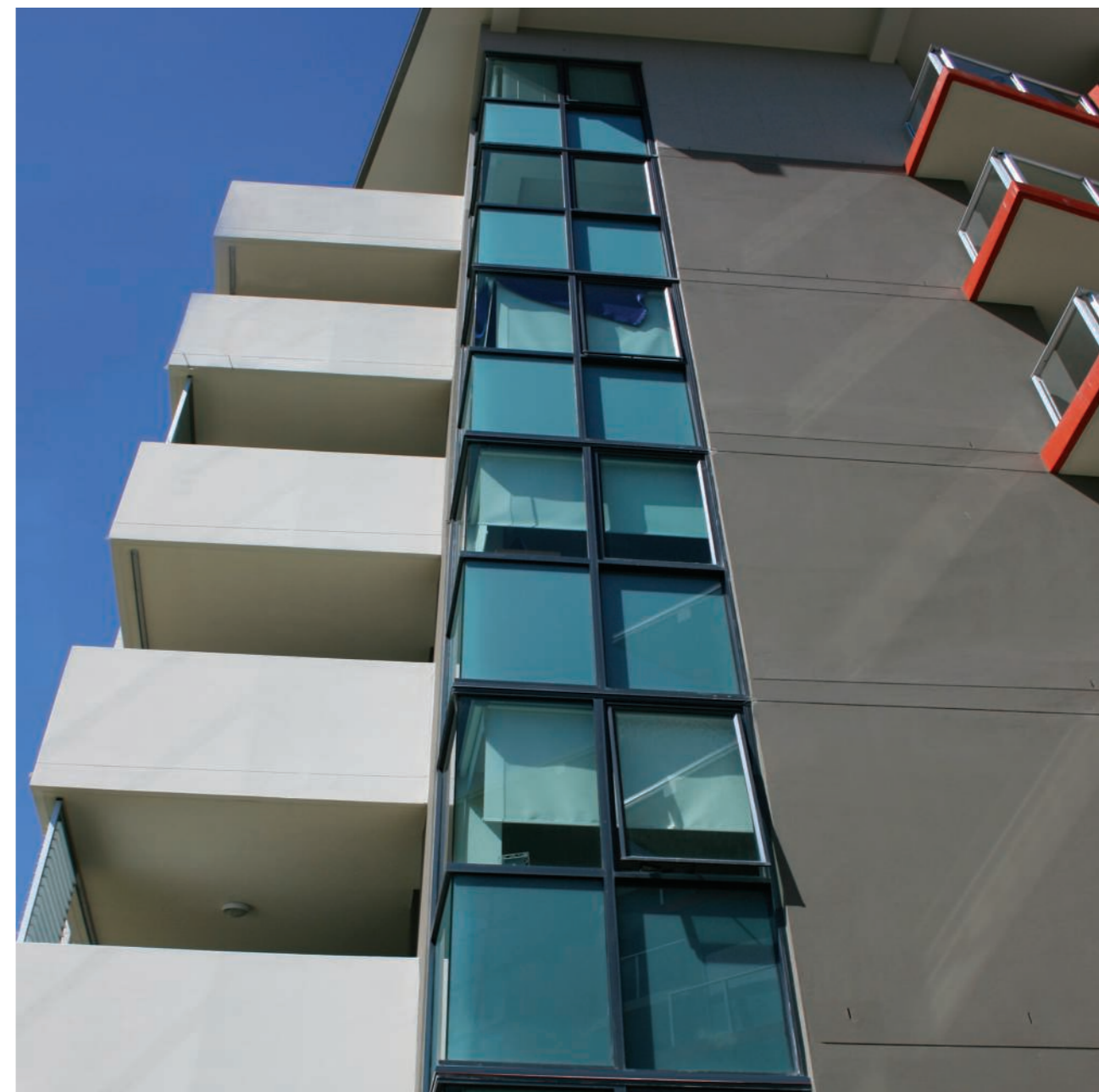
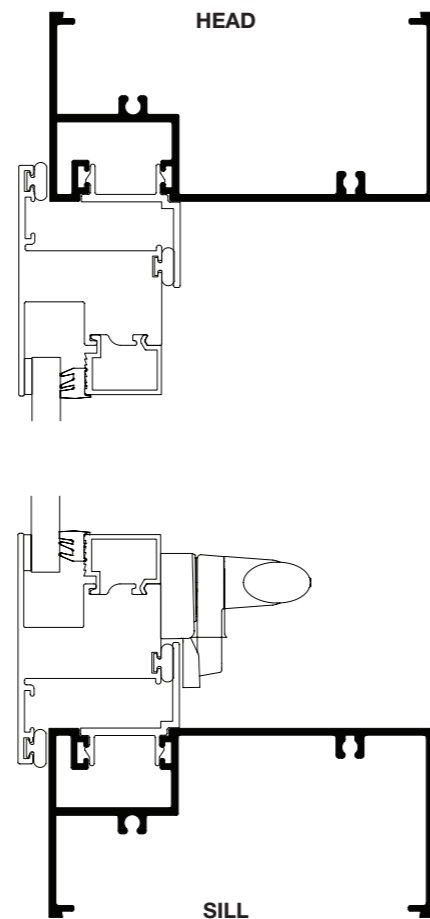
SoundMizer® acoustic solutions are available in various STC ratings.

**Hardware**

Heavy duty stainless steel friction stays are standard. Cam handles are standard in non-keyed or keyed upgrades. Restricted openings are also standard for high-rise situations.

**Finishes**

Wide range of powdercoat finishes are available (including warranty powders and anodised options).





# viscount **sliding & stacker door**

**Framing**

The frame is 102mm overall width and frame can be revealed.  
Sill threshold complies with disability access standard.

**Door System**

Maximum door height is 3000mm.  
Maximum door panel width is 1500mm.  
Door panels have a 50mm rounded profile on the rails and stiles.

**Energy Efficiency**

Thermashield® systems are available in various WERS ratings and glazing styles. Glazing is available in 4mm toughened glass through to 18mm double glazed units.

**Acoustic Options**

SoundMizer® acoustic solutions are available in various STC ratings.

**Product Options**

- Internal sliding
- External sliding
- Stacker door (internal or external)
- Multi stacking door
- Corner opening doors

**Hardware**

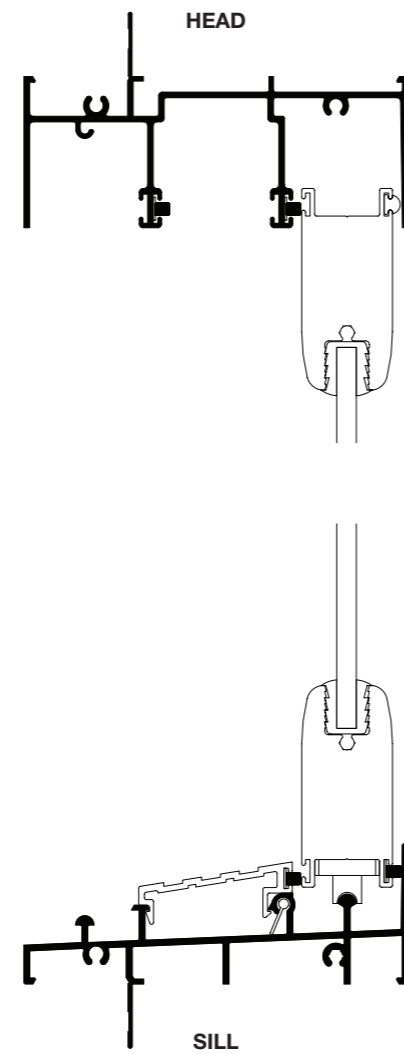
Doors are fitted with heavy duty double bogey rollers as standard.

**Lock Options**

Doors have options of single and dual beak locks.

**Finishes**

Wide range of powdercoat finishes are available (including warranty powders and anodised options).



# windsor sliding & stacker door

## Framing

Frame is available in 102mm, 150mm, 204mm, 212mm 252mm and 300mm overall width. 102mm and 150mm frames can be revealed. Sill is always fitted with sub drainage sill.

## Door System

Maximum door height is 3000mm.  
 Maximum door panel width is 1800mm.  
 Maximum sliding door opening is 7200mm.  
 Maximum stacker door opening is 12m (3-12 panels) subject to configuration.  
 Sliding and stacker maximum weight is 165kg per panel.

Panel size may vary according to Pascal Ratings.

## Energy Efficiency

Thermashield® systems are available in various WERS ratings and glazing styles. Glazing is available in 4mm toughened glass through to 24mm double glazed units.

## Acoustic Options

SoundMizer® acoustic solutions are available in various STC ratings.

## Hardware

Doors are fitted with heavy duty double bogey rollers as standard.

## Lock Options

Doors are supplied with commercial mortice lock or face mounted lock options.

## Flyscreens

Flyscreen is only available with the 150mm and 212mm frames.

## Finishes

Wide range of powdercoat finishes are available (including warranty powders and anodised options).

**NOTE:** The installation of the Windsor Sliding and Stacker Door must be carried out by an authorised Trend® installer.

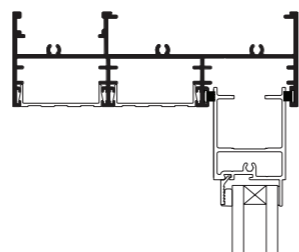


Diagram is 150mm frame without flyscreen

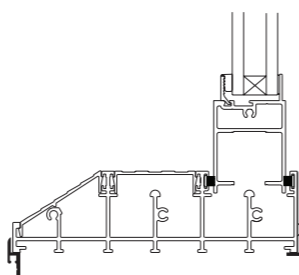
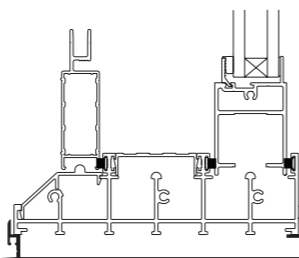
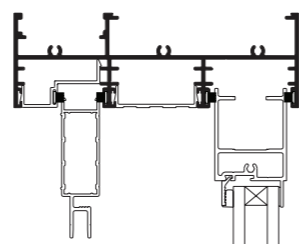


Diagram is 150mm frame with flyscreen





# hinged door

**Product Options**

Crestlite® Hinged Door is available in a range of options to suit requirements. Inward, outward or both are available. A variety of thresholds are available, including disability access.

**Door Panels**

Mid-rail options of 50mm or 115mm are available. Optional 50mm glue on bars are also available. Standard 65mm stiles can be supplied with 115mm.

**Energy Efficiency**

Thermashield® systems are available in various WERS ratings and glazing styles. Glazing is available in 5mm toughened glass up to 12.38mm only. Glazing is made with ease utilising a secure captive wedge option, which allows for efficient installation. The frame contains deep pockets allowing for greater overlapping strength of the glass, which can accept up to 12.38mm in size.

**Acoustic Options**

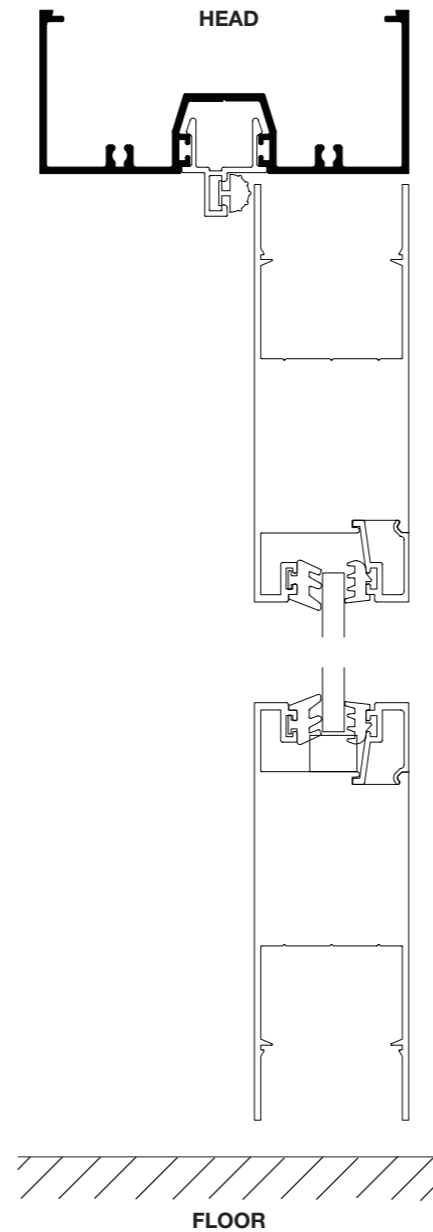
SoundMizer® acoustic solutions are available in various STC ratings.

**Hardware**

Door has a standard range of hardware, including hinges, closers and specialised handles.

**Finishes**

Wide range of powdercoat finishes are available (including warranty powders and anodised options).



# pivot door

**Product Options**

Crestlite® Pivot Door is available in a range of options to suit requirements. Inward, outward or both are available. A variety of thresholds are available, including disability access.

**Door Panels**

Mid-rail options of 50mm or 115mm are available. Optional 50mm glue on bars are also available. Standard 65mm stiles can be supplied with 115mm.

**Energy Efficiency**

Thermashield® systems are available in various WERS ratings and glazing styles. Glazing is available in 5mm toughened glass up to 12.38mm only. Glazing is made with ease utilising a secure captive wedge option, which allows for efficient installation. The frame contains deep pockets allowing for greater overlapping strength of the glass, which can accept up to 12.38mm in size.

**Acoustic Options**

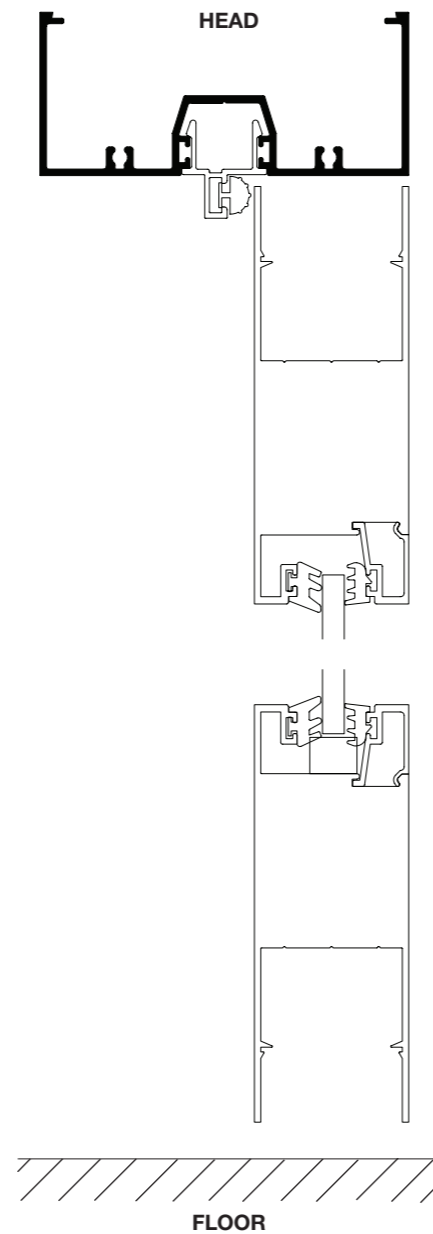
SoundMizer® acoustic solutions are available in various STC ratings.

**Hardware**

Door has a standard range of hardware, including hinges, closers and specialised handles.

**Finishes**

Wide range of powdercoat finishes are available (including warranty powders and anodised options).





# thermashield system



Windows and doors that utilise the advanced properties of Thermashield® energy efficient systems, offer a much more precise way to shield your home from weather extremes.

The Thermashield® system makes it easy to evaluate the level of protection required for specific windows and doors in your home.

To get the best energy savings, and the most comfort, different windows and doors are required for different climates. In cold climate areas, Thermashield® can prevent heat loss, air leakage, and create warmer window surfaces, while significantly reducing solar heat gain in hot climate areas.

High-performance Thermashield® systems make buildings more energy efficient, more comfortable and reduce peak heating and cooling loads.

high-performance  
**energy**  
**efficient**  
systems



# soundmizer acoustics

# SoundMizer®

With the constant need to combat extremes of noise, windows and doors can often be the weakest link in the isolation of noise from outside a home.

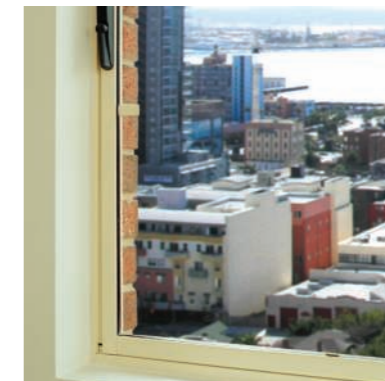
SoundMizer® products are high-performance, acoustic windows and doors designed to minimise troublesome noise.

All acoustic products are tested by industry laboratories and adhere to current Australian standards. Solutions are available for high-traffic areas including freeways, railway environments and airport surroundings.

Acoustic solutions up to Rw 46 can be achieved with single and secondary glazing elements for any noisy environment.



**ACOUSTIC SOLUTIONS**  
designed to  
minimise  
**troublesome noise**



## trend® guarantee

- (a) The following statement only applies to a consumer sale of goods or services as defined in the Australian Consumer Law:
- (i) Our Goods come with guarantees that cannot be excluded under the Australian Consumer Law. You are entitled to a replacement or refund for a major failure and for compensation for any other reasonably foreseeable loss or damage. You are also entitled to have the Goods repaired or replaced if the Goods fail to be of acceptable quality and the failure does not amount to a major failure.
- (b) Trend guarantees the Goods supplied will be free against defects arising from faulty workmanship or materials for a period of seven (7) years (one (1) year for Goods considered by Trend® as moving parts) from date of delivery and guarantees that services will be rendered with due care and skill. The guarantees are subject to the following conditions being complied with by the Customer:
- (i) The Goods are installed (where Goods are not installed by Trend® and maintained in accordance with the manufacturer's recommendations (refer to Trend®'s Installation Guide and Care and Maintenance Guide, available at [www.trendwindows.com.au](http://www.trendwindows.com.au) or from Trend®'s Sales offices) and has not been subject to misuse, abuse or neglect;
  - (ii) Timber Goods are sealed (within one (1) month of delivery) with two coats of paint, varnish or sealer to both faces and edges including top and bottom. Exterior quality finishes in light reflective colours (NOT dark colours) must be applied to all Goods exposed to direct sunlight or the elements;
  - (iii) All solid construction timber doors are hung with three (3) 100mm hinges;
  - (iv) A warp in a door will not be considered a defect unless it exceeds 4mm for doors up to 2,150mm high, 6mm for door heights between 2,150mm and 2,400mm and 7mm for door heights above 2,400mm;
  - (v) Aluminium product surfaces that have been treated with a powdercoat finish provide a much higher resistance to scratching or scuffing and protect against normal weather conditions. However Trend® does not warrant against fading or colour change due to normal weather conditions that will cause any coloured surface to fade or darken gradually.
- (c) Notwithstanding clause 9(a), the liability of Trend® in respect of a breach of a consumer guarantee or any warranty made under these Terms and Conditions for any Goods not of a kind ordinarily acquired for personal, domestic or household use is limited, to the extent permitted by law and at the option of Trend® to:
- (i) in the case of supply of Goods;
    - (A) replacing the Goods or the supply of equivalent Goods;
    - (B) the repair of the Goods;
    - (C) the payment of the cost of replacing the Goods or of acquiring equivalent Goods; or
    - (D) the payment of the cost of having the Goods repaired.
  - (ii) in the case of supply of Services;
    - (A) the supplying of the Services again; or
    - (B) the payment of the cost of having the Services supplied again.
- (d) To the extent permitted by law, all other warranties whether implied or otherwise, not set out in these Terms and Conditions are excluded and Trend® is not liable in contract, tort (including, without limitation, negligence or breach of statutory duty) or otherwise to compensate the Customer for:
- (i) any increased costs or expenses;
  - (ii) any loss of profit, revenue, business, contracts or anticipated savings;
  - (iii) any loss or expense resulting from a claim by a third party; or
  - (iv) any special, indirect or consequential loss or damage of any nature whatsoever caused by Trend®'s failure to complete or delay in completing the order to deliver the Goods.
- (e) To claim the warranty provided under this clause, the Customer must, within 7 days of identifying the defect in the Goods, provide written notice of the defect to the supplier from whom the Goods were purchased or to the nearest Trend® location listed on the Trend® website.
- (f) Where Trend® determines that the Customer is entitled to the warranty under this clause and the Goods have not been affixed to property to the extent that Trend® cannot easily remove the Goods from the property, Trend® agrees to bear the cost of claiming the warranty.
- (g) The benefits provided to the Customer by the warranty are in addition to other rights and remedies available to the Customer under the law.

## installation instructions

1. Fit flashing to window surround as required.
  2. Frame must be packed plumb, square and not twisted between the opening. Ensure the sill is fully supported, failure to do so may result in sill roll on windows.
  3. Secure aluminium windows by nailing through reveal. Timber windows should be secured by back nailing through stud, not face of frame to stud. Alternatively, on cavity brick construction use galvanised building lugs located at 450mm maximum centres.
  4. Keep sash closed whilst installing frames.
  5. Sill bricks should be at least 15mm clear of window frame to allow for settlement.
  6. Do not stand on the windows, or use them as a support for scaffolding, or slide material through the frame.
  7. Do not permit weight of eaves or arch bars to bear on aluminium or timber frames.
  8. Remove cement mortar dropping from windows immediately, taking care to avoid scratching glass and frames, as permanent damage can result.
  9. Timber windows should have a first coat of an appropriate paint, oil or stain applied within thirty (30) days of delivery. Do not paint timber in dark colours. Prior to sealing, avoid placing timber near gum trees, sawdust and metal filings, as staining may occur.
- No guarantee will be given if timber or aluminium painted surfaces come into contact with acid when cleaning brickwork.

## care & maintenance

On site, windows and doors should be stored in a clean dry area free from cement, lime, paint, acid etc.

During installation they must be protected from building fall-out such as wet plaster, mortar, paint and welding splatter. Remove wet plaster, cement, mortar and other droppings immediately, using ample clean water and a sponge or rag, to avoid permanent staining or scratching of finished surfaces.

If removal is delayed and scraping becomes necessary the surface finish may suffer. Door tracks and window sills should be protected from planks, scaffolding and barrows, and kept clean of grit and dirt.

Acid used for cleaning brickwork must be prevented from dripping onto aluminium or timber surfaces. Should this fail the acid must be immediately washed off with ample clean water.

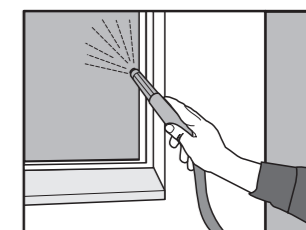
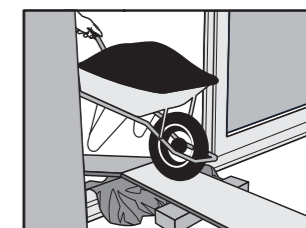
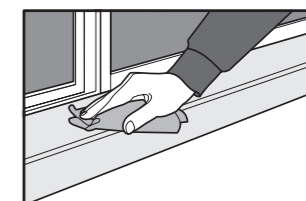
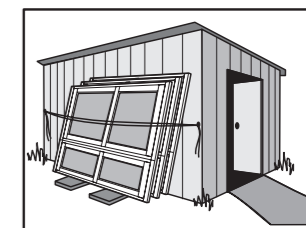
If stripable coatings or pressure sensitive tapes are used to protect exposed surfaces, care must be taken not to damage the finish during their removal. Prolonged exposure to sunlight can make them increasingly difficult to remove.

## maintenance conditions

1. All powdercoated surfaces should be cleaned using a soft cloth or sponge with a solution of warm water.
 

Where the atmosphere is deemed to be non-hazardous eg. rural, the period between cleaning frequency can be extended up to twelve (12) months.

In industrial environments or environments with atmospheric pollution the normal frequency of cleaning should be at not more than three (3) monthly intervals. However, where there is high atmospheric pollution, such as a marine/coastal environment, cleaning should be conducted at monthly intervals.
2. Remove cement mortar dropping from windows immediately, taking care to avoid scratching glass and frames, as permanent damage can result. Trend® Windows & Doors will not be liable for any damage that may occur if the timber or aluminium painted surfaces come into contact with acid when cleaning brickwork.
3. Timber products **MUST BE** sealed (within one (1) month of delivery) with two coats of paint, varnish or sealer to both faces and edges including top and bottom. Exterior quality finishes in light reflective colours (not DARK colours) must be applied to all products exposed to direct sunlight or the elements.





# contact

## SYDNEY

44-52 Mandoon Road,  
Girraween, NSW 2145  
Tel: (02) 9840 2000  
Fax: (02) 9840 2100

3/384 Eastern Valley Way,  
Chatswood, NSW 2067  
Tel: (02) 9882 1155  
Fax: (02) 9882 1566

## WOLLONGONG

Tel: (02) 4256 1966  
Fax: (02) 4256 3863

## NOWRA

Unit 1A, 175 Princes Highway,  
South Nowra, NSW 2541  
Tel: (02) 4423 1500  
Fax: (02) 4423 5100

## NEWCASTLE

56-60 Munibung Road,  
Cardiff, NSW 2285  
Tel: (02) 4956 7139  
Fax: (02) 4956 9146

## DUBBO

1/55 Douglas Mawson Drive,  
Dubbo, NSW 2830  
Tel: (02) 6884 4055  
Fax: (02) 6884 4057

## OURIMBAH

5 Catamaran Road,  
Ourimbah, NSW 2258  
Tel: (02) 4389 1402  
Fax: (02) 4389 8460

## PORT MACQUARIE

5 Merrigal Road,  
Port Macquarie, NSW 2444  
Tel: (02) 6581 5100  
Fax: (02) 6581 4056

## TAMWORTH

7-11 Hume Street,  
Tamworth, NSW 2340  
Tel: (02) 6765 4066  
Fax: (02) 6765 2584

## ACT

74 Sheppard Street,  
Hume, ACT 2620  
Tel: (02) 6260 1266  
Fax: (02) 6260 1381

## TASMANIA

GP Glass  
26 Loone Lane,  
Spreyton, TAS 7310  
Tel: (03) 6427 3166  
Fax: (03) 6427 3161

## MELBOURNE

92 Canterbury Road,  
Bayswater North, VIC 3153  
Tel: (03) 9751 7000  
Fax: (03) 9751 7010

192 Burwood Road,  
Hawthorn, VIC 3122  
Tel: (03) 9214 4000  
Fax: (03) 9214 4040

Seaford, VIC 3198  
Tel: (03) 9770 8888  
Fax: (03) 9775 1811

## REGIONAL MELBOURNE

72-74 Main Road,  
Ballarat, VIC 3350  
Tel: (03) 5338 7837  
Fax: (03) 5331 3335

Geelong, VIC 3220  
Mob: 0418 522 515  
Fax: (03) 5261 4234

## ADELAIDE

15-17 Indama Street,  
Regency Park, SA 5010  
Tel: (08) 8347 0866  
Fax: (08) 8347 0522

## SUNSHINE COAST

27-43 Skyreach Street,  
Caboolture, QLD 4510  
Tel: (07) 5428 9200  
Fax: (07) 5428 9222

## GOLD COAST

134 Lahrs Road,  
Ormeau, QLD 4208  
Tel: (07) 5549 4100  
Fax: (07) 5549 4111

## HERVEY BAY

6 Miller Street,  
Urangan, QLD 4655  
Tel: (07) 4125 3188  
Fax: (07) 4125 2188

PRODUCTS NOT AVAILABLE IN WA

## Trend® National Customer Assistance Centre

(between 8:30am - 4:30pm EST, M-F)

# 13 72 74

[www.trendwindows.com.au](http://www.trendwindows.com.au)

email: [info@trendwindows.com.au](mailto:info@trendwindows.com.au)