

7th IWA-ASPIRE Conference 2017 & Water Malaysia Exhibition 2017

Kuala Lumpur Convention Centre

Exhibition : 11 - 13 September

Conference : 11 - 14 September

WATER MALAYSIA
2017



The Malaysian Water Association



INVITATION TO VISIT
www.aspire2017.org.my

Breaking Boundaries—Developing a Better Water Future for Asia Pacific Regions

Jointly organized by the Malaysian Water Association (MWA), Asia Pacific Group (ASPIRE) and the International Water Association (IWA), the 7th International Water Association (IWA)-Asia Pacific Regional Group (ASPIRE) Conference & Exhibition will host over 800 international and local delegates and attract over 200 technology and solution providers as the biggest water event in the region. Since 2005, IWA-ASPIRE has brought together decision-makers from government agencies, regulators and policy makers, national and state water authorities, utilities and water management companies, and water and environment professionals from around the globe to acquire a multinational perspective on water management solutions, with a focus on the Asia Pacific region.

This year IWA-ASPIRE 2017 will take place concurrently with Water Malaysia 2017 (WM2017) which is the biennial, international exhibition that encompasses all across the entire water cycle, covering integrated water management, water supply management, wastewater management, NRW Management, Flood Mitigation & Drainage, Monitoring, Testing and Measuring, and other areas. Besides accessing a showcase of the latest technologies and solutions for the water industry, visitors will benefit from informative product demonstrations and technical seminars by exhibiting companies at the event.

We invite you to visit IWA-ASPIRE 2017 and Water Malaysia 2017 and meet key industry players, network with other professionals, expand your business network and keep updated with developments in the region's water industry!

Network with Key Industry Players

- Hear from renowned speakers and gain crucial insights into a wide range of water-related topics relevant to the Asia Pacific region at the conference
- View an international showcase of the latest water technologies, solutions and services
- Meet face-to-face with key industry players, decision makers from the public and private water sectors, and an estimated 5,000 trade visitors and 100 exhibitors
- Expand your business network, explore collaboration and investment opportunities

Highlights

Conference

Exhibition

Product Launches

Product Seminars

Networking Reception

Business Matching

Poster Presentation



Event Schedule

| Event | Start | End | Venue |
|--------------------------------------|---------|---------|-------------------------|
| 11 September 2017 (Monday) | | | |
| Conference | 9.30am | 5.30pm | Level 3, KLCC |
| Exhibition Opening Ceremony | 9.00am | 10.30am | Level 3, Banquet Hall |
| Exhibition | 10.00am | 5.00pm | Level 3, Grand Ballroom |
| Networking Reception | 5.30pm | 6.30pm | Level 3, Banquet Hall |
| Product Seminars | 10.00am | 5.00pm | Level 3, Grand Ballroom |
| 12 September 2017 (Tuesday) | | | |
| Conference | 9.00am | 5.00pm | Level 3, KLCC |
| Exhibition | 10.00am | 5.00pm | Level 3, Grand Ballroom |
| Product Seminars | 10.00am | 5.00pm | Level 3, Grand Ballroom |
| 13 September 2017 (Wednesday) | | | |
| Conference | 9.00am | 5.00pm | Level 3, KLCC |
| Exhibition | 10.00am | 5.00pm | Level 3, Grand Ballroom |
| Product Seminars | 10.00am | 5.00pm | Level 3, Grand Ballroom |

The Organiser reserves the right to make changes to the event programme without prior notice.

Keynote Speakers at IWA-ASPIR E Conference



Prof. Saburo Matsui
Emeritus Professor
Kyoto University (2007)



Ir LAM Tin Sing, Enoch
Director of Water Supplies
The Government of the
Hong Kong SAR



Dato' Seri. Ir. Dr. Zaini Ujang
Secretary General
Ministry of Energy, Green
Technology and Water,
Malaysia



Dr. Petra Pana
Deputy State Secretary for
Foreign Economic Relations,
Hungary



Datuk Mohd Najib Mohd
Executive Director of Planning,
Kuala Lumpur City Hall



Prof. Gustaf Olsson
Professor in Industrial
Automation, Professor
Emeritus at Lund University,
Sweden

Sponsor Highlights



Ranhill

RANHILL HOLDINGS BERHAD

Ranhill is listed on the Main Market of Bursa Malaysia Securities Berhad and has invested extensively in the environment and power sectors. Its operations and services are primarily in Malaysia and its international operations are centered in Asian markets such as China, Thailand and South East Asia. In the environment sector, it provides water supply services, operates water and wastewater treatment plants, and provides specialised services in the management and optimisation of water utility assets. . In the power sector, it owns and operates two 190 MW plants in Sabah.



BEWG (M) SDN BHD

BEWG is listed on The Main Board of the Stock Exchange of Hong Kong Limited (Stock Code: 0371) and NO.1 Influential Enterprises of China Water Industry, Leveraging on the core strengths of Water Servies, it becomes a Total Water Solutions Provider for the Municipal Water Cycle and highly regarded in Municipal Environment Service. For Public-Private Partnership (PPP) business models like Build-Operate-Transfer (BOT), BEWG is worldwide No.1 Developer ranked by Global Water Intelligence.



ALIRAN IHSAN RESOURCES BERHAD (AIRB)

Rapid industrial growth has increased the demand for fresh water supply among industrial players. AIRB introduces a sustainable water supply by waste water recycling. The approach adopts a robust technology using membrane filtration process to recycle the waste water and produce potable water. It provides tremendous cost saving and solution for industrial owners who has space and fresh water supply limitation.



PARAFOIL DESIGN & ENGINEERING SDN BHD

**Flood Are You Protected?
Let Our Flood Barriers Protect Your Premises!!!**

Our Latest Completed Projects

Stations of The Sungai Buloh-Kajang MRT Line:

- Bukit Bintang Station
- Merdeka Station
- Pasar Seni Station
- Muzium Negara Station

Commercial Project

The St. Regis Kuala Lumpur



Meet Them At The Event

3E AUTOMATION AND ENGINEERING SDN BHD

3E Automation and Engineering represent DANFOSS Water & Waste Water Authorised Distributor and SIEMENS Digital Factory Authorized Distributor in Factory Automation (FA) PLC products.

Additional information is available at www.3eautomation.com.my



ADASFA SDN BHD

More than 20 years of specialized experience in manufacturing water engineering products, ADASFA SDN BHD is one of the leading in designing, manufacturing, constructing and managing of water engineering projects.

AHF INDUSTRIES SDN BHD

AHF INDUSTRIES Sdn Bhd and I-Tork Controls Co Ltd are specialized in designing and producing high quality electric and pneumatic actuators.

Each actuator is produced and tested under strict quality control by ISO9001:2000.

Please visit www.ahfindustries.com and www.i-tork.com.



AQUAFIDES SCHWEIZ AG

Aquafides offer a range of filtration, storage and disinfection options including:

- UVC disinfection systems
- Microfiltration with ceramic filters
- Water conservation with silver ion systems

ARACHEM (M) SDN BHD

NEW PRODUCT!

Compact Series Mixers:

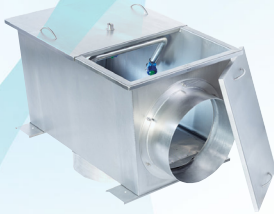
Performance without the Price Tag

• Simple • Strong • Compact • Affordable

Visit us at Booth #076 for more information.



Meet Them At The Event



AURA-LITE (M) SDN BHD

GRAF Optimax- XXL external Filter® Aura-Lite Rainwater Harvesting System External filter for rainwater harvesting system. Provides over 95% water yield. Self-cleaning filter with 0.35mm smooth surface wire mesh.

BEIJING YINGERHUI ENVIRONMENTAL TECHNOLOGY CO., LTD

Beijing Yingherui Environmental Technology Co.,Ltd GFS Tank manufacture and global marketing Provider of the whole solution for urban & rural organic waste treatment



BOKJU CO., LTD

SPE PANEL DESCRIPTION

The SPE Panel is double layered panel to melt LDPE on stainless panel for various water industry especially reservoirs, liners and chemical tanks.

BUREAU OF SEWERAGE TOKYO METROPOLITAN GOVERNMENT

Bureau of Sewerage Tokyo Metropolitan Government is responsible for operating and constructing Tokyo sewerage system, which plays a vital role in ensuring a safe and pleasant living environment and in the makeup of a healthy water circulation system.



Bureau of Sewerage Tokyo Metropolitan Government



BUREAU OF WATERWORKS TOKYO METROPOLITAN GOVERNMENT

We stably provide potable delicious water of the high-quality with the world-class facilities and technologies. We support 13 million citizens' life and urban activities in Tokyo, the Japan's capital city.



Bureau of Waterworks Tokyo Metropolitan Government

Meet Them At The Event

CTI RESOURCES SDN BHD

Product: Water Network Optimization Suite (WNO)

CTI Resources, the distributor of Water Network Optimization Suite (WNO), a new industry solution from Schneider Electric that delivers both real-time and "future-time" visibility into Water and Wastewater networks. WNO provides an improved control room user experience with visualization and enhanced alert management within a SCADA operator-friendly environment, without having to switch between applications.



EBARA PUMPS MALAYSIA SDN BHD

Ebara Pumps Malaysia Sdn Bhd (a joint venture company with Ebara Corporation, Japan) provides genuine Ebara products and satisfactory services to meet customer requirements at all times. With quality, value, and performance as our promise, EPM staff is always ready to assist customers with expertise and dedication.

ENDRESS+ HAUSER (TENAGA) SDN BHD

Liquiline System CA80AM-Colorimetric system for online monitoring of water and wastewater treatment

Automatic calibration and cleaning with low consumption of reagents save operating and maintenance costs. Advanced diagnostics with remote access ensure process safety.



ENVIRONMENTAL SYSTEMS RESEARCH INSTITUTE (Esri)

Esri applies The Science of Where to unlock data's full potential in every organization. We continue to pioneer real-world problem solving using geographic information systems (GIS).



Meet Them At The Event

EXCEL PIPES SDN BHD

FARATEC® Glass Reinforced Polymer (GRP) pipes and fittings are supplied in diameters 50-4000mm and pressures up to 50 bars, and for open trench or aboveground applications. We also provide GRP manholes, GRP manhole covers, and FRP tanks



FEDERATION OF JAPAN WATER INDUSTRIES, INC

FEDERATION OF JAPAN WATER INDUSTRIES, INC

Since 1966, the Federation of Japan Water Industries, Inc., has been contributing continuous development of waterworks enterprise as the sole representative organ of waterworks, industrial water supply and sewerage industries at national level.

GEORGE FISCHER (M) SDN BHD

As a global company with headquarter in Switzerland, GF Piping Systems develops, produces and markets a comprehensive range of piping systems and components in a variety of materials used worldwide to transport water, gases and aggressive media.



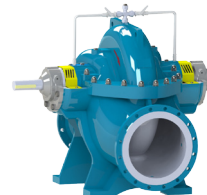
HOMA REGIONAL OFFICE ASIA

HOMA provides submersible waste drainage pumps and complete pumping stations including control and monitoring technology:

- For the transport of communal and industrial waste water to main and intermediary pumping stations
- For pressure drainage with grinder pumps
- For wastewater treatment in sewage treatment plants

HUNAN CREDO PUMP CO.,LTD

Our products includes: Horizontal/Vertical Split case pump, Vertical Turbine Pump, Mixed flow pump, Vertical self-priming pump etc, which are widely used in energy generating, water supply and drainage, Mine& Metallurgy & steel industry, Power plant, fire control system, etc.



Meet Them At The Event



i2O WATER

i2O provides a suite of smart network solutions to help water utilities respond to the challenges created by an increasing and urbanising population, more extreme weather events, ageing infrastructure and more demanding customers.

INSTITUTE OF WATER MODELLING (M) SDN BHD

IWM Malaysia offers consultancy services in the fields of Coastal Hydraulics, Urban Water Management, Flood Forecasting, Surface & Groundwater Modelling, ESIA & Climate Studies including Hydrographic & Topographic Surveys using Precise Sophisticated Technology.



JC MACHINERY SDN BHD

Globally trusted as a Reliable and Efficient water pump.

JAPAN SEWAGE WORKS ASSOCIATION (JSWA)

Japan Sewage Works Association (JSWA) is a non-profit association with the membership of around 1500 municipalities, 1000 private companies and 500 individuals, which was established in 1964. JSWA acts to represent the interest of local wastewater utilities.



JAPAN WATER WORKS ASSOCIATION (JWWA)

JWWA's main activities include research and study of water supply management, technologies and water quality. Those activities are quite essential for people's daily life and support water utilities in Japan.



Meet Them At The Event

JIANGSU BENENV ENVIRONMENTAL TECHNOLOGIES CO., LTD.

Benenv focuses on providing our clients with integrated solutions from design, research, and manufacture to BOT/EPC engineering. Our products include membrane, sludge dewatering/drying, incineration/carbonization, fermentation/composting, etc



JFE ENGINEERING CORPORATION

Developing products and technologies based on its global environment protection philosophy, JFE Engineering continuously offers the world's most advanced industrial infrastructure aiming to improve the environment and create the foundations for life.

KEN SENG LINE STOPPING SDN BHD

KEN SENG is a Malaysia incorporated company that specializes in Hot Tapping and Line Stopping.

We specialize in:

1. Designing and Manufacturing Hot Tapping and Line Stopping Machine.
2. Providing Hot Tapping and Line Stopping services in water and chill water industry.



MATRIX MEGAFLOW

We focusing in supply, support& consultancy's in water industries that range from ultra pure water to industrial wastewater. We provide all sort of piping materiel, valves and flow control system. Safe environment and safe ourselves.

MILLION WATER SDN BHD

Million Water Sdn. Bhd. specializes in water technology for drinking water and industrial water management. We provide Million Water filter systems, services and solutions for applications related to water.



MILLION WATER SDN. BHD.
ENERGY WATER SYSTEM . WATER SPECIALISTS



Meet Them At The Event

METAWATER

METAWATER CO., LTD

METAWATER can provide a total solution from design, construction up to O&M service. We are ranked at top-class in drinking water and wastewater treatment market in Japan.

NEURON JAPAN CO., LTD

Employing leading-edge technology, NEURON JAPAN provides stainless-steel expansion joints and flexible tubes for public water system. In addition, the "Anaconda Method" is one of the most revolutionary construction methods which enables the aging water pipes to renew without open-cut process.



nilam adil

NILAM ADIL SDN BHD

Nilam Adil Sdn Bhd is a Malaysian company specialise in leakage detection, advance pressure management, hydraulic modelling and NRW related product, to ensure an economic and sustainable NRW reduction programme.

PACIFIC ENGINEERING & SERVICES PTE LTD

Wangen Xpress Pump – specially developed for easy maintenance. The X-Lift quick change system ensures reliable pumping of media and a fast stator/rotor change. Suitable for all media types.



P-Tech Engineering Sdn. Bhd.

P-TECH ENGINEERING SDN BHD

P-TECH ENGINEERING SDN BHD established in 1993, is ISO certified specializes in pumps and Sewage Treatment Equipment. Our offices, located strategically throughout Malaysia, ensure prompt services to customers. We are a one stop centre to cater for all your needs.

Meet Them At The Event

PWA TECHNOLOGY SDN BHD

All just in 5 minutes!

Luminutra's 2nd Generation ATP monitoring offers a powerful combination of speed, versatility, portability, and accuracy for microbiological testing in any industry concerned with water.



SAM BO SCIENTIFIC CO LTD

CAST can automatically determine and control the coagulant dosage over influent water quality in the water/wastewater treatment plants as well as the polymer dosage in the sludge dewatering process.



SCK TRADING SDN BHD

SCK TRADING SDN BHD is a member of TIANJIN SINO-VALVE TECHNOLOGY CO., LTD, which is one of the china's leading producers of butterfly valves and it's products is present in more than 40 countries worldwide.



SGS (M) SDN BHD

SGS as world's leading independence inspection company who serving our clients for inspection, certification, testing and verification. We cover full range of matrices and wide range of parameters with specialized capabilities.

SHANDONG ZHANGQIU BLOWER CO., LTD

Our Roots Blower is the most advance technology from Japan and USA. We are exporting to over 70 countries in world wide.



Meet Them At The Event



SHANXI TIANLI JINRUN INDUSTRIAL CO.,LTD

Our company deals in different kinds of water treatment chemicals, such as Poly Aluminium Chloride (PAC), Soda Ash light, Soda Ash Dense, activated carbon, fixing agent, water decoloring agent, PAM and Calcium Hypochlorite soon.

SHIMADZU MALAYSIA SDN BHD

Shimadzu provides a broad range of analytical instruments indispensable for research, development, and quality control in a variety of fields. Our high-level, sophisticated instruments include chromatographs, spectrometers, and elemental, environmental & surface analysis systems.



SONIC CORPORATION CO., LTD

Established more than 20 years sales experience of ultrasonic flow meters in Japan, Sonic Corporation's best-selling ultrasonic liquid flow meter LF-2000 and ultrasonic boundary level meter BL-550 will be exhibited at WaterMalaysia2017.



SONIC CORPORATION

SWING CORPORATION

Swing Corporation provides the optimal solutions in a wide variety of business areas that support water for utility and industry by utilizing cutting edge technology and services.



TAISEI KIKO CO., LTD

Since its foundation in 1941, we have developed retainer glands and various pipe fittings with concept of water pipeline maintenance. Our unique under pressure construction method is also highly valued.

Meet Them At The Event

TECHKEM SDN BHD

TECHKEM covers the treatment of portable water, industrial waste and process water recycle systems. We offer our customers a comprehensive range of chemicals, system and services to cover a total quality solution. We are an ISO9001:2015 certified organization which adhered to the highest quality and standards.



THE JAPAN INSTITUTE OF WASTEWATER ENGINEERING AND TECHNOLOGY (JIWET)

The Japan Institute of Wastewater Engineering and Technology (JIWET) is a Public interest incorporated foundation that conducts survey, research, development and evaluation activities related to sewerage services, and disseminate the results of those activities.

TOKYO METROPOLITAN SEWERAGE SERVICE CORPORATION

Since Tokyo Metropolitan Sewerage Service Corporation was established, we have been a group of professional sewerage engineers, and are recognized as a reliable contractor for maintenance of sewerage facilities.



TSS TOKYO WATER

TSS TOKYO WATER

TSS Tokyo Water handles the technological and engineering efforts required to supply Tokyo with the water it needs, and by providing support to water utilities in Japan and overseas, also helps contribute to improving water supplies worldwide.

YOKOHAMA WATERWORKS BUREAU

Japan's modern waterworks and sewerage systems originated in Yokohama in the 1800s and now the City of Yokohama offers safe and stable service to over 3.7 million citizens.



YOKOHAMA WATERWORKS BUREAU



VISITOR'S REGISTRATION FORM

Fax Reply to +603 6140 8833 • Email : watermalaysia@protempgroup.com

Exhibition : 11 - 13 September • Conference : 11 - 13 September • Kuala Lumpur Convention Centre

Full Name (Prof/Dr/Mr/Mrs/Ms) _____

Designation _____

Organisation _____

Address _____

Postal Code _____

City _____

State _____

Country _____

Telephone _____

Fax _____

Mobile Number _____

Email _____

QUESTIONNAIRE

Please answer the following questions.

1. Please indicate your nature of business.

- | | | |
|---|--|---|
| <input type="checkbox"/> Consulting | <input type="checkbox"/> Construction/Contracting | <input type="checkbox"/> Auditing |
| <input type="checkbox"/> Education/Training | <input type="checkbox"/> Government | <input type="checkbox"/> National & State Water Authorities |
| <input type="checkbox"/> Property Development | <input type="checkbox"/> Research & Development | <input type="checkbox"/> Equipment Manufacture/Distributor |
| <input type="checkbox"/> Water Operators | <input type="checkbox"/> Others (Please specify) _____ | |

2. Which of the following best describes your profession/nature of work?

- | | | |
|---|--|---|
| <input type="checkbox"/> Agriculturalists | <input type="checkbox"/> Architects | <input type="checkbox"/> Business Owners |
| <input type="checkbox"/> Consultants | <input type="checkbox"/> Contractors | <input type="checkbox"/> Engineers |
| <input type="checkbox"/> Human Resource | <input type="checkbox"/> Regulators/Policy Makers | <input type="checkbox"/> Researchers/Academicians |
| <input type="checkbox"/> Urban Planners | <input type="checkbox"/> Others (Please specify) _____ | |

3. Which of the following best describes your purpose of visit?

- | | | |
|--|-------------------------------------|--|
| <input type="checkbox"/> Gather Information | <input type="checkbox"/> Investment | <input type="checkbox"/> Joint Venture |
| <input type="checkbox"/> Network | <input type="checkbox"/> Purchasing | <input type="checkbox"/> Sourcing New Products |
| <input type="checkbox"/> Others (Please specify) _____ | | |

4. Please indicate how you came to know about the exhibition.

- | | | |
|--|--|---|
| <input type="checkbox"/> Associations/Institutions | <input type="checkbox"/> Electronic Media | <input type="checkbox"/> Social Media |
| <input type="checkbox"/> Colleagues/Associates/Friends | <input type="checkbox"/> Invitation from Organisers | <input type="checkbox"/> Invitation from Exhibitors |
| <input type="checkbox"/> Magazines/Newspapers | <input type="checkbox"/> Others (Please specify) _____ | |

5. Please indicate your purchasing power in relation to your position in the company.

- | | | |
|---|--|---|
| <input type="checkbox"/> Decision Maker | <input type="checkbox"/> Significant Influence | <input type="checkbox"/> Initial Recommendation |
| <input type="checkbox"/> Specifier | <input type="checkbox"/> Not Involved | |

Visiting Info

Exhibition : 11 - 13 September : 10.00am - 5.00pm
Conference : 11 - September : 9.30am - 5.30pm • 12 - 13 September : 9.00am - 5.00pm
Technical Visit : 14 September

Admission

Admission is free. Visitors are required to register at the registration counter before entering the hall.

Attire

All visitors must be in business attire. Visitors below the age of 18 are not permitted entry. The organiser reserves the right to refuse entry to visitors at its own discretion.

with compliments from

Water Malaysia Secretariat Office

PROTEMP Exhibitions and Conferences Sdn Bhd

38-3, 2nd Floor, Jalan PJU 5/9, Dataran Sunway, Kota Damansara,
47810 Petaling Jaya, Selangor, Malaysia.

Tel : +(603) 6140 6666 • Fax : +(603) 6140 8833

Email : watermalaysia@protempgroup.com

Website : www.watermalaysia.com/www.aspire2017.org.my

Facebook : www.facebook.com/WaterMalaysia



Scan this code to
enter our website

Copyright – PROTEMP Exhibitions and Conferences Sdn Bhd. All Rights Reserved



Supported by



Platinum Sponsor



Silver Sponsor



Bronze Sponsor



Lanyard Sponsor



Conference Sponsor



Media Partners

