

Introducing Sharp's Challenge: Color Night-Vision Camera

Sharp's high-sensitivity CCD technology, renowned worldwide for its technological powers, recently took on the challenge of developing the first*1 night-vision camera in the industry capable of capturing night images in color.

Key Spec

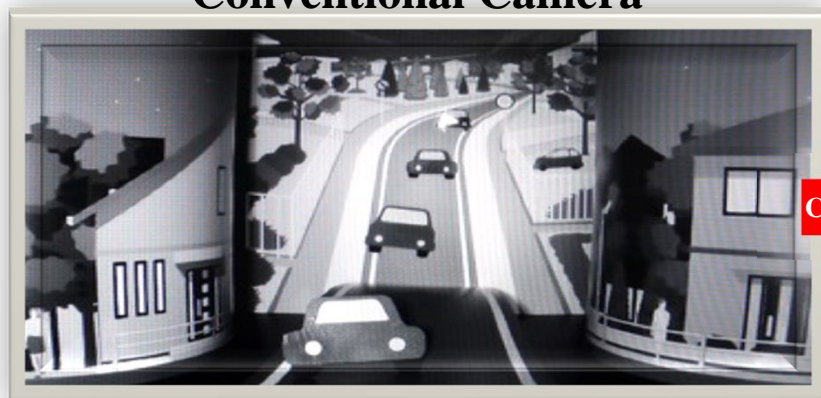
Product	Infrared color night-vision camera
Part No.	LZ0P420A
Size/Weight	Approx.970cc (φ83 x 180mm) Approx.940g
Output	HD-SDI/Analog (NTSC/PAL)
Near IR light	Embedded
Image sensor	1/3" 1.3M Near IR capable CCD



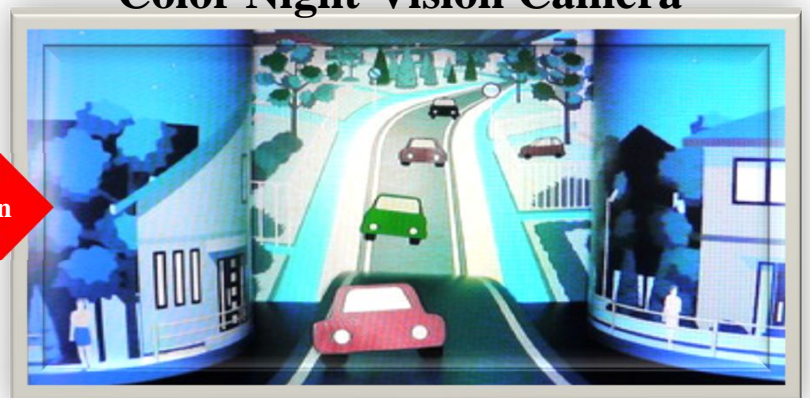
Key Features: Clear images regardless daytime or night time

- ① Color image even in complete darkness (0 lux) <= used to be B/W image only
- ② HD(720p/30fps) capable, for higher resolution and smooth image
- ③ Compact size realized by single CCD type

Conventional Camera



Color Night-Vision Camera



Colorization →

Other Companies Product



【Indoor】

【Outdoor】