

# Facial Recognition Thermal Detector Intelligent access control



Quick identification and realtime entrance control

100% compatible with gate machine



Proactive Facial  
Recognition



New Height of  
Anti-Spoofing



Speedy  
Recognition



Wide Pose Angle  
Acceptance  
 $\pm 30$



Touchless for  
Better Hygiene

# FACIAL RECOGNITION THERMAL DETECTOR

A thermal detector solution incorporated with a Facial Recognition Reader model : EP-FRT100

Applications :-

- Factories
- Schools
- Government / Private Office Tower Lift Lobby Entrance
- High-Value Condominium Lift Lobby Entrances
- Airports Departure and Arrival Gates



# THE NEW NORMAL – AFTER MCO LIFTED



## THE CHALLENGES FACED



### Manual Forehead Temperature Measurement by Security Personnel

- Slow due to long queues
- Temperature inaccuracy
- Security manpower designated to carry out temperature measurement – waste of resources
- No Social Distancing – too close to each other



### Manual Daily Data Entry by Security Personnel

- Slow and potential mistakes due to human error
- Daily records must be stored and managed
- Unnecessary administrative duties

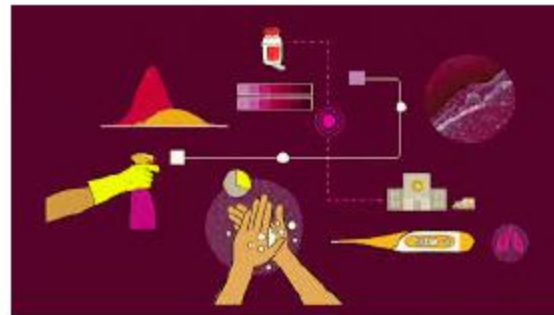
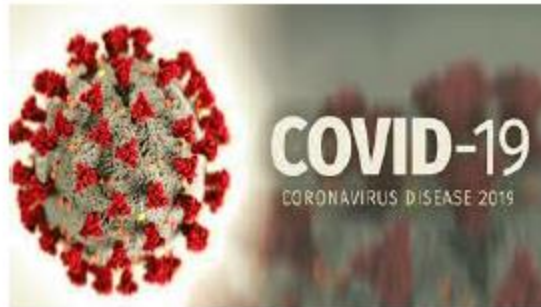


### Promotes Safety and Health Assurance for all Personnel & Visitors

- Create a well balanced and safe working environment for personnel of a factory, building or students in a school
- Unobtrusive reader leaves a better impression for visitors
- Promotes social distancing without the need to touch or sanitise one's hands
- Promotes a safe and healthy environment that reflects the culture of the client



## MAJOR FACTOR : PREVENTION & DETECTION OF INFECTIOUS DISEASES



### Manage Infectious Disease Outbreaks

- By ensuring everyone's temperature is taken daily
- Complying to the prevention of diseases by WHO in the use of face masks
- Staff and Visitor Tracking and Registration

### Breaking the Chain of Infection & Transmission

- By collating and tracking past data to break the chain of infection and transmission
- By complying to the WHO's recommendation on the basic protective measures against Covid19
- Tracking of travel records within the last 14-21 days

### By complying to the WHO's recommendation on the basic protective measures

- Temperature monitoring
- Regularly sanitize hands
- Wear face masks
- Social distancing
- Self Quarantine at Home

# FACIAL RECOGNITION THERMAL DETECTOR

The Error Of Only  $\pm 0.3^{\circ}\text{C}$   
**TEMPERATURE MEASUREMENT**

Alarm when detected a fever



- ✓ Fast Speed Detection
- ✓ Non-Contact Measure
- ✓ Avoid Physical Contact
- ✓ Voice Audio Notice
- ✓ Instant Alert to Operator

Temp. Measuring Distance	Precision	Response Speed
0.5 to 1.3 meter	$\pm 0.3^{\circ}\text{C}$	$\pm 200\text{ ms}$

## VARIOUS DETECTION METHODS

### SMART CONTROL AND PREVENTION



No Mask



Abnormal Body Temperature



Stranger



## PROFESSIONAL SOLUTION AND SERVICES PROVIDER

### **EXCEL Telecommunication (M) Sdn Bhd**

Suite F-3-16, IOI Boulevard,  
Jalan Kenari 5, Bandar Puchong Jaya,  
47170 Puchong, Selangor Darul Ehsan, Malaysia.

T : (+603) 8073 3777

F : (+603) 8073 2688

W: [www.exceltelecomm.com](http://www.exceltelecomm.com)