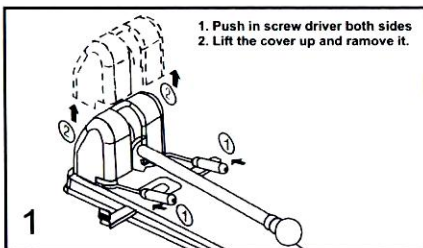


# HEAVY DUTY PUNCH - 1620

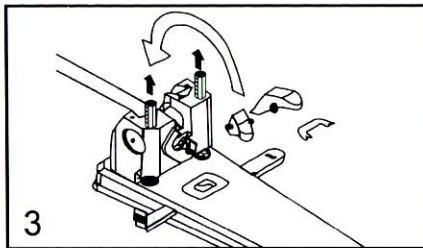
HOW TO REPLACE PUNCHES

## INSTRUCTION MANUAL

REMOVE PLASTIC COVER BY EXPANDING LOWER PORTION AS SHOWN WITH THE HELP OF CHISEL TYPE SCREW DRIVER.



TURN THE HANDLE FULLY BACKWARD AND PULL THE WORN-OUT OR BROKEN PUNCHES OUT.



REPLACE THE SCRAP COVER MARKED AS 'L' ON SIDE MARKED AS 'L' ON BODY & SCRAP COVER MARKED AS 'R' ON SIDE MARKED AS 'R' ON BODY. ASSEMBLE THE PUNCHING MACHINE BACK TO THE ORIGINAL CONDITION PUSH THE COVER DOWN UNTIL IT GETS LOCKED WITH A CLICK.

### SPECIFICATIONS -

PUNCHING CAPACITY ..... 160 SHEETS UPTO 80 GSM. PAPER  
PUNCHING HOLES SIZE ..... 6 mm  
PUNCHING DISTANCE ..... 8 cm. & 8 x 8 x 8 cm.  
SIZE (L x W x H) ..... 409 x 129 x 141 mm  
WEIGHT ..... 2.75 KGS (APPROX.)

### CAUTION -

- AVOID PUSHING FINGERS AROUND PUNCHING AREA TO AVOID INJURY.
- DO NOT PUNCH ON BOARDS, VINYL OR CLOUTH COVERED PAPERS.
- REMOVE STAPLE OR PINS BEFORE PUNCHING PAPERS.

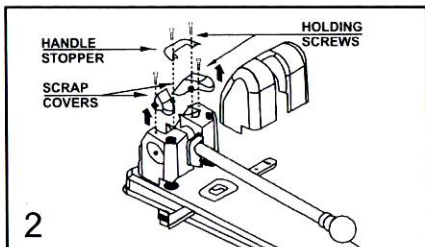
• The specifications of our products are subject to change without prior notice because of our continuous efforts to improve the quality.

## KANIN (INDIA) LIMITED

Industrial Plot No. 79, Sector 25, Faridabad-121 004, Delhi NCR (India)

Ph. : (91-129) 2233369-71, 4066110; Fax : (91-129) 2231183

E. Mail : faridabad@kangaro.com; Visit us at <http://www.kangaro.com>



INSERT NEW PUNCHES AND TURN THE HANDLE TO FRONT SIDE WHILE KEEPING EQUAL HIGHT OF PUNCHES & PLACING TEETH TOWARDS BACKSIDE.

