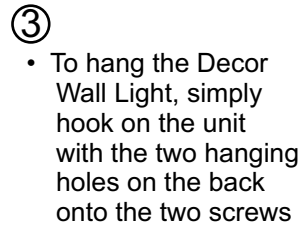
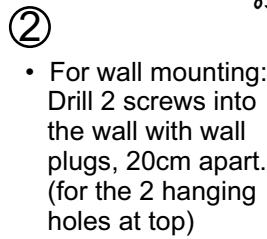
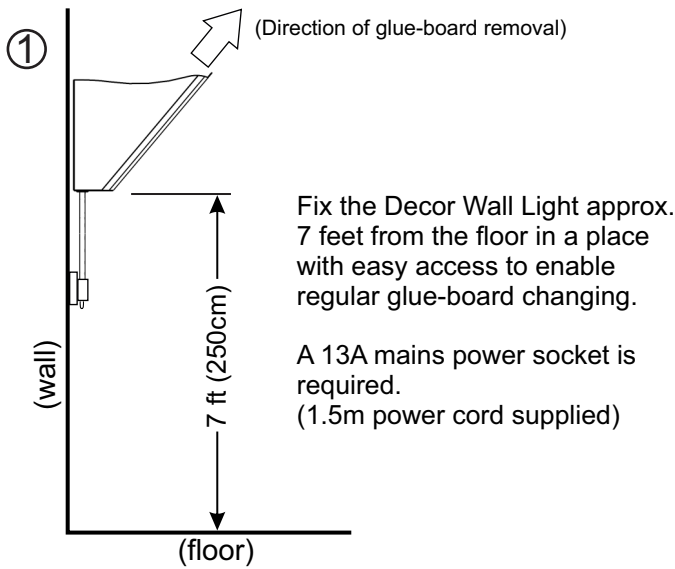


Decor UV Light Trap

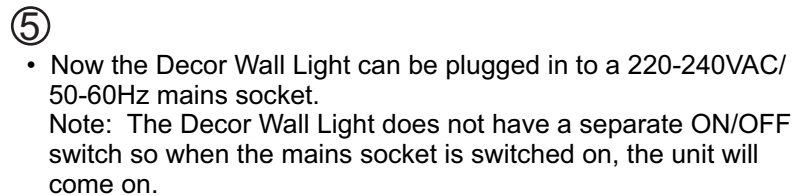
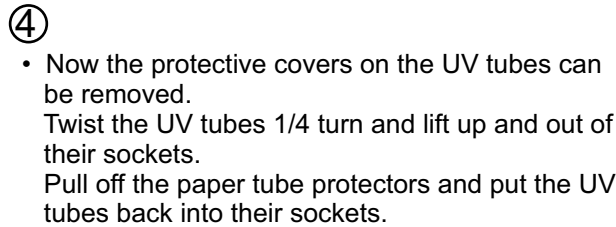
Wall Light

Installation Instructions

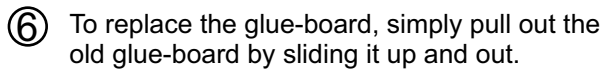


• Note: Leave the screw heads proud of the wall by 6-7mm.

• After hanging, it is recommended to tighten the two screws to secure the Decor Wall Light so that it is not easily removed or knocked off by accident.



Changing Glue Boards

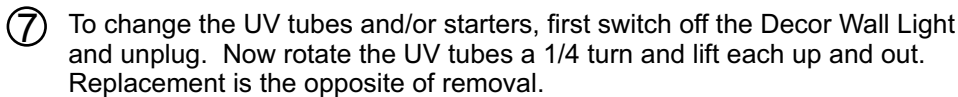


Inserting a new one is equally simple. Just slide it in under the UV tubes until it stops at the back of the unit.

- CAUTION -

It is recommended to switch off the Decor Wall Light before changing the glue-board to avoid directly looking at the UV tubes.

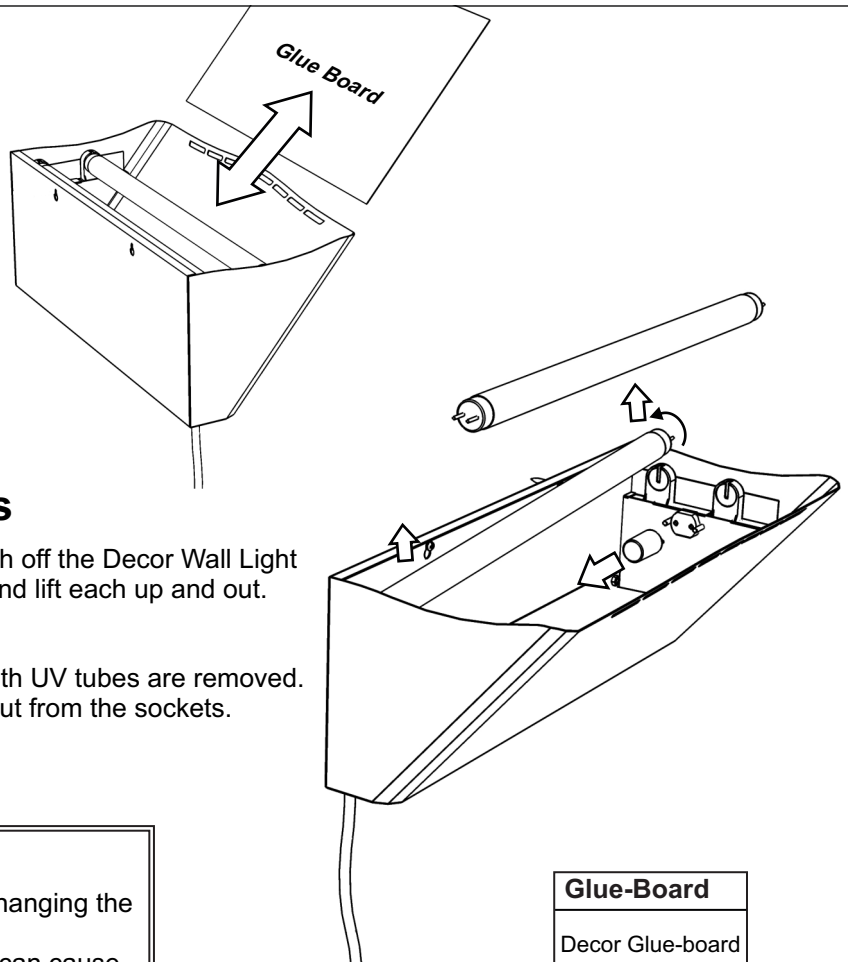
Changing UV tubes and Starters



To change the Starter, it is best to do this when both UV tubes are removed. Turn each Starter a 1/4 turn anti-clockwise. Pull out from the sockets. Replacement is the opposite of removal.

- CAUTION -

- Always turn off the mains socket and unplug before changing the Decor Wall Light UV tubes or starters.
- Do not leave any wires trailing across the floor which can cause a person to trip and fall.
- Always dispose of the used glue boards in a hygienic manner.
- Do not stare at the at the UV tubes for long periods.



Glue-Board		
Decor Glue-board		
Input Current	UV Tubes (2)	Starters (2)
240 V-AC 50-60Hz	Hitachi F15T8/BL 15W Black Light	Philips S2 Ecoclick Starter

