

**Experience The  
Breakthrough  
Technology**



**Physical mode.  
No Toxic.  
Chemical Resistance  
Management  
Environment Friendly**

# PROVECTA®



MANUFACTURER  
ICB Pharma  
10 Lemat Street  
43-603 Jaworzno, Polska  
phone: +48 32 745 47 00  
pest@icbpharma.com  
www.icbpharma.com

Sole Distribute by:  
X Way Sdn Bhd  
1, Jalan 3,  
Taman Industri Pandan Indah,  
55100 Kuala Lumpur,  
Malaysia  
sales@xway.com.my  
www.xway.com.my

## THERE'S NO PLACE TO HIDE

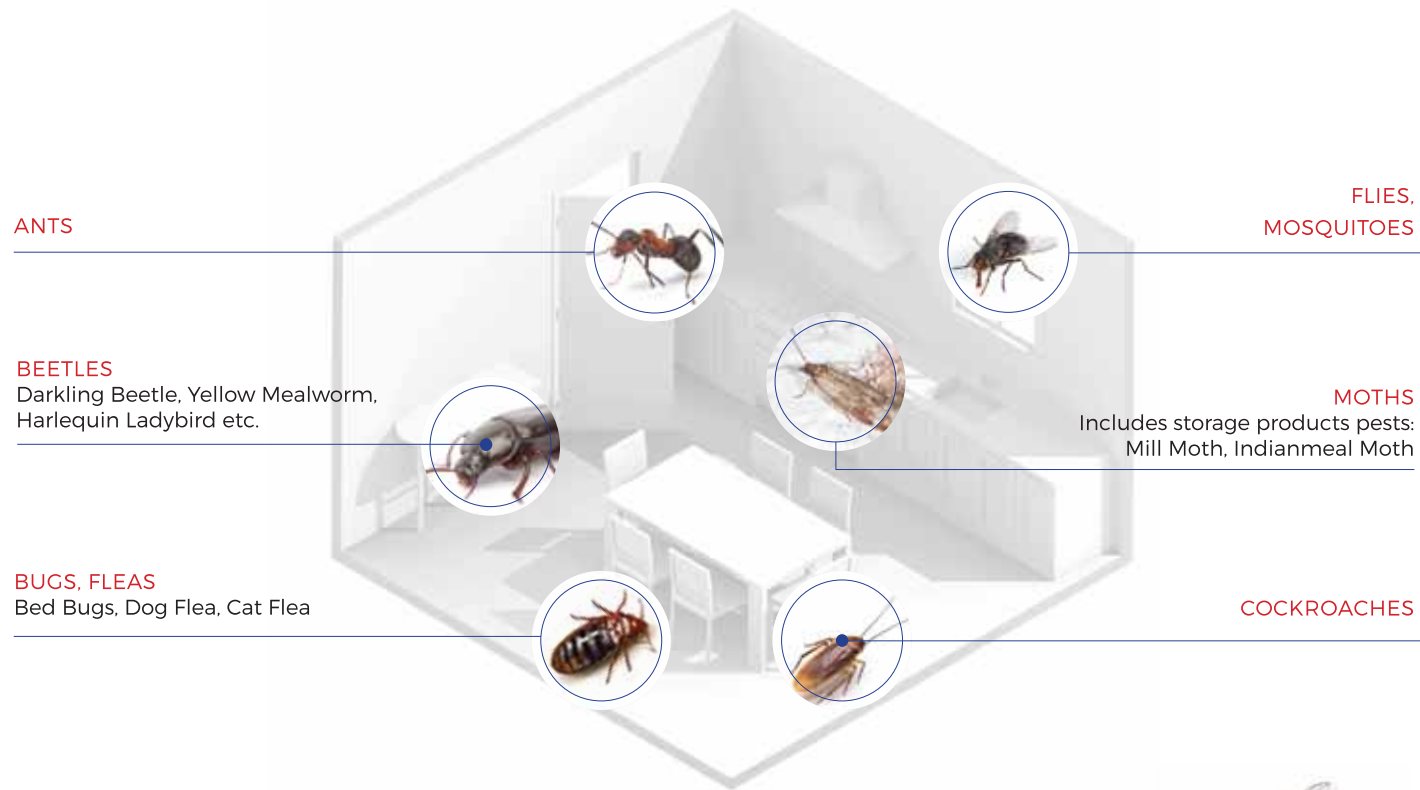
A NEW QUALITY IN THE FIELD OF ELIMINATING THE INSECTICIDE RESISTANT INSECTS

**ICBpharma** Pest Innovations



## Characteristics of PROVECTA®

Provecta® is an innovative product with a hybrid mode of action, intended to control the pest population in hardly accessible locations. Product has a non-specific effect **on larvae**



DUE TO THE LACK OF TOXICITY - BOTH THE PRODUCT AND THE DEPOSIT OF ITS DEGRADATION DO NOT POSE ANY RISK TO PEOPLE AND THEIR ENVIRONMENT



## Advantages of PROVECTA®

- Leaves no toxic residues on the surface after the treatment\*
- Broad spectrum of action towards numerous species of insects and arachnids
- Enhances the penetration of the insecticides to the hardly accessible places\*\*
- Acts synergistically as an adjuvant mixed with insecticide\*\*



PROVECTA®  
IS AVAILABLE IN 100 ML  
AND 1L CAPACITY



- Can be used in the presence of food products\*
- Creates no resistance\*
- Provides the immediate (knock-down) effect
- Does not contain any toxic substances\*
- No waiting period\*

\*REFERS TO PROVECTA® MIXED WITH WATER ONLY  
\*\*REFERS TO PROVECTA® MIXED WITH INSECTICIDE

## Innovative technology created by ICB Pharma



ALL IN WEB IS THE TECHNOLOGY OF CREATING A 3 - DIMENSIONAL MOLECULAR STRUCTURE, ENTIRELY PERMEABLE, WHICH CAUSES THE PEST'S IMMEDIATE IMMOBILIZATION.

In contrast to standard insecticides based on a neurotoxic mechanism or having a direct chemical interaction with biochemical and physiological functions of pests, ALL IN WEB provides a purely physical mode of action similar to a sticky trap. The most significant advantages of the technology are:

- the lack of resistance to the product,
- no resilience of the treated populations.

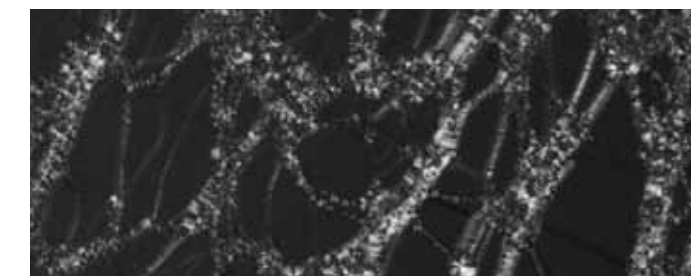
ALL IN WEB technology was developed and optimized to control urban pests. The different method of application is the factor that distinguishes it from other technologies based on the physical immobilization mechanism developed by ICB Pharma. These technologies differ in features that enable their effective and safe usage, such as:

- the length of the polymer chain,
- the associated density of the cross-linking net,
- the thickness of the generated 3-dimentional net, structure responsible for the immobilization of the pest.

The parameters of ALL IN WEB technology optimized to:

- natural habitats,
- the vitality,
- size and strength of the pest

enhance their effective elimination. The technology is intended for the use in residential and industrial areas or hospitals and it is entirely safe for the users and their health. The product based on ALL IN WEB does not stain and has no effect on losing color of the treated surfaces which is one of the key aspects in the control of urban pests, such as bedbugs, fleas, etc.



The product consists of the mixture of specific silicon polymers with cross-linked agents. It creates entirely permeable, polymeric net structure on the pest's body in the process of polycondensation.



product has a non-specific effect on larvae



it controls the pest population in hardly accessible locations



it's neutral for the environment, does not cause its chemical contamination



creates no resistance



it can be used in the presence of people and animals



does not colour or stain the treated surface



The structure evenly spreads on the insects' body causing their immediate external immobilization and blocking their vital functions. This results in an immediate elimination of the targeted species.

## ✓ Preparation of working solution

### PROVECTA MIXED WITH WATER ONLY

Provecta® does not contain any toxic substances - the product is safe for the environment. It is effective against many species of insects and has a non-specific effect on larvae, it causes their immobilization. Provecta® is neutral for the environment, does not cause its chemical contamination.



#### BED BUG CONTROL



##### BED BUG CONTROL

CONCENTRATION: 0.25 % - 2.0 %

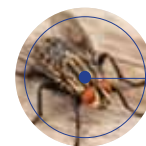
All places where the pests gather, should be treated thoroughly. The entire infested / affected area including cracks, crevices, and any location where insects may gather e. g. mattresses, bed frames, head boards, upholstered furniture should be covered. The follow-up application should be conducted 21 days later, but no later than 28 days after the initial application. In temperature over 30°C, repeat the procedure 14 days after the initial application or whenever the population level increases and re-infestation has been noted.



##### CRAWLING INSECTS (cockroaches, black ants, pharaoh ants) ARACHNIDS (spiders)

CONCENTRATION: 0.25 % - 1.0 % (ANT CONTROL)

Apply formulation topically using a fine mister (LV) - recommended droplet size: 80 - 100 microns. Formulation needs to be reapplied whenever the population become severe and upcoming insects have been seen.



##### FLYING INSECTS - INDOOR TREATMENT (flies, mosquitoes)

CONCENTRATION: 0.25 % - 1.0 %

Apply formulation topically using a fine mister (LV) - recommended droplet size: above 50 microns (80 - 100 microns is the optimum range). Ideally apply topically in the evening when insects (especially flies) are resting on surfaces. Formulation needs to be reapplied whenever the population become severe.



##### FLYING INSECTS - OUTDOOR TREATMENT (mosquitoes)

CONCENTRATION: 0.1 %

Apply formulation to mosquito resting locations (small trees, bushes etc.) using a fine mister (LV) - recommended droplet size: above 50 microns (80 - 100 microns is the optimum range). **Do not exceed 0,1% concentration when applied on insects present on plants. Higher concentrations may cause phytotoxicity effect (plant damage).**



##### STORAGE PRODUCT PESTS CONTROL

CONCENTRATION: 1 %

Apply formulation using a fine mister (LV) - recommended droplet size: 45-60 microns. Ideally apply as a space and topical treatment for both flying and resting individuals.

## ✓ Preparation of working solution

### PROVECTA MIXED WITH INSECTICIDE

Provecta® acts synergistically, reinforces the effectiveness of insecticide and increases the performance of the treatment. It ensures an even distribution of the insecticide on a treated surface. The product reduces the surface tension and allows getting to insects' hiding places.



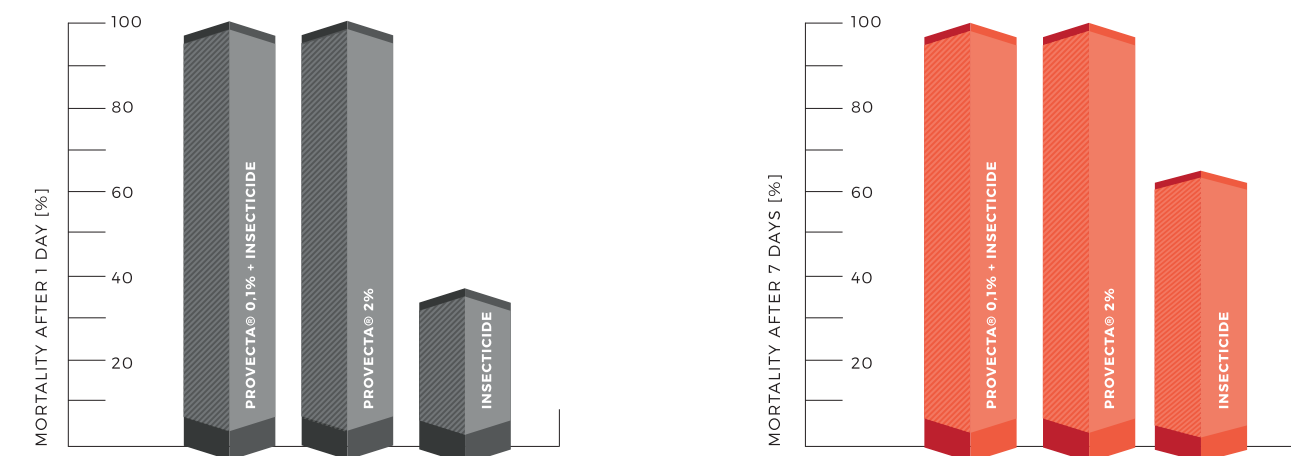
##### PROVECTA MIXED WITH INSECTICIDE

CONCENTRATION: 0,1 %

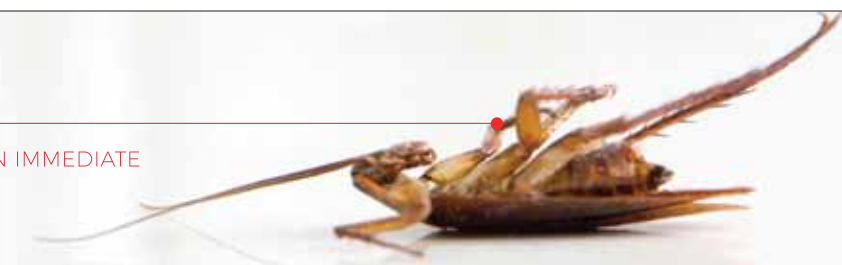
Provecta® should be used in 0,1% (1ml/l) concentration, mixed with an insecticide spray solution prepared in advance. Prepare an insecticide working solution. Add a proper dose of Provecta®. Shake or stir well. Special care should be taken while using Provecta® mixture on the surface susceptible to damage / stains e.g. mattresses. Trial treatment is recommended before proper treatment.

## ✓ Efficacy of Provecta®

Mixed with water and insecticide against cockroach population.



PROVECTA® PROVIDES AN IMMEDIATE (KNOCK-DOWN) EFFECT



## ✓ Universal mode of action against urban pest species

**COCKROACHES** (i.e. German cockroach)



An omnivorous, synanthropic insect that avoids light and feeds at night. It can be found in bakeries, restaurants, hospitals and apartments. Eats farinaceous products, sugar and other kitchen waste. Causes food contamination and may mechanically transmit pathogens (e.g. viruses, bacteria, protozoa and eggs of parasitic worms). German cockroach is a source of strong inhalation allergens.

*Coleoptera* (i.e. **DARKLING BEETLE**)



A thermophilic insect, which can be found on chicken and turkey farms. Larvae and adult insects feed on compound feed intended for farmed animals. This pest is a vector of viruses (Marek's disease) and bacteria (e.g. Salmonella). Its larvae are a source of carcinogenic fungal toxin. Darkling beetle appears in numerous populations and can cause damage of livestock's buildings construction.

*Diptera* (i.e. **COMMON HOUSE FLY**)



A synanthropic insect known around the world. It develops and feeds in contaminated places, from where it transmits germs into the neighbourhood of people. On the mouth parts and legs of the fly, they carry bacteria, protozoa and eggs of parasitic helminths, which cause the diseases of the gastrointestinal tract, respiratory system and human skin.

*Lepidoptera* (i.e. **FLOUR MOTH**)



A cosmopolitan species, a pest present in food storage facilities and food processing establishments, warehouses. Found in kitchen cabinets as well. The development of caterpillars of this butterfly takes place in food products, they eat and pollute grain, flour, nuts and almonds. Inhabited food products are not suitable for consumption. Flour moth may be the cause of allergies development in sensitized people.

*Hymenoptera* (i.e. **ANTS**)



The omnivorous social insects. On urbanized areas they are treated as pests because they may affect negatively the construction of pavements and terraces. Pharaoh's ants inhabiting buildings pollute food products. They can transmit bacterial and viral diseases.

*Heteroptera* (i.e. **BED BUG**)



A bloodsucking parasite of a man and animals, which spreads all over the world. It attacks at night causing painful pricks and characteristic skin changes. In case of sensitized people it may cause severe allergic reactions. Bedbugs can carry bacteria (*Staphylococcus aureus*). At the places of their occurrence there is a specific smell and the brown stains of their faeces are visible.

*Siphonaptera* (i.e. **HUMAN FLEA**)



Known all over the world (cosmopolitan) a bloodsucking parasite of a man and many species of mammals and birds. The larvae of this insect hide in cracks and crevices of apartments and farm buildings. Its pricks cause painful itching while in sensitized people a strong allergic reaction. The human flea is a habitat of microorganisms and it can transmit many dangerous infectious diseases (including plague) to the hosts.

## ✓ Frequently asked questions

### ? IS PROVECTA® EFFECTIVE AGAINST PESTS' EGGS?

PROVECTA® is effective against active developmental stages, e.g. larvae, nymphs and adults forms. It is recommended to repeat the treatment when new individuals hatch i.e. in case of bed bugs it is 3-4 weeks after initial treatment.

### ? DOES PROVECTA® CAUSE ANY STAINS ON SPRAYED SURFACES?

Working solution of PROVECTA® does not cause damage, stain or stickiness on the treated surface. The product's degradation deposit does not pose any threat to people and animals.

### ? WHAT IS THE EFFICACY AND THE MODE OF ACTION OF PROVECTA® WITH NO INSECTICIDE?

PROVECTA® in mixture with water causes the immediate external immobilization. The product's mode of action can be compared to a sprayable trap or spider's web.

### ? DOES PROVECTA® HAVE AN EFFECT ON THE PESTS THAT ENTER FRESHLY SPRAYED SURFACE?

PROVECTA® is effective only on the insects present in the range of application during the moment of treatment.

### ? CAN PROVECTA® BE APPLIED IN THE PRESENCE OF PEOPLE AND ANIMALS?

According to the toxicological data, PROVECTA® can be used in the presence of people and animals when used according to the instruction on the label.

### ? IS IT RECOMMENDED TO REMOVE THE PLANTS FROM THE PLACE OF A TREATMENT DURING THE APPLICATION OF PROVECTA®?

No, but it is recommended to avoid spraying the plants in order to prevent the possible phytotoxic reaction.

### ? CAN PROVECTA® BE APPLIED BY ULV DEVICES?

The spraying should be performed only by the use of LV (low volume) devices. Do not use the ULV sprayers. The recommended droplet size: 80-120 µm (no smaller than 50 µm).

## ✓ Recommended places of application

It is recommended for use in hotels and restaurants (1), hospitals (2), food storage facilities (3) and food processing establishments (4), warehouses (4), stables, barns and parks (5).

