

PRETECTOR

Active Ingredient : Fipronil 5.0% w/w

TERMITICIDE

Termites
(x30)

WHY CHOOSE PRETECTOR ?

- ✓ Non-repellent and transferable.
- ✓ Termite colony management.
- ✓ It is an effective termiticide.
- ✓ A member of the fiprole class of insecticide.

HOW PRETECTOR WORKS

Termites cannot smell nor see or avoid PRETECTOR as it is a non-repellent liquid. They will contact and ingest PRETECTOR unwarily. A delayed mode of action that allows PRETECTOR to be transferred from infected termite to another through contact and trophallaxis (communal feeding) and finally will affect the entire termite in the colony.



READ THE PRODUCT LABEL BEFORE USE

JIRP.P/1108/529



IMASPRO RESOURCES SDN. BHD. (100955-M)

37, Jalan 5, Kaw. 16, Taman Intan, 41300 Klang, Selangor Darul Ehsan, Malaysia.
Tel : 603 - 3343 1633 Fax : 603 - 3343 1868 E-Mail : imaspro@imaspro.com

PRETECTOR



Termites



Termites



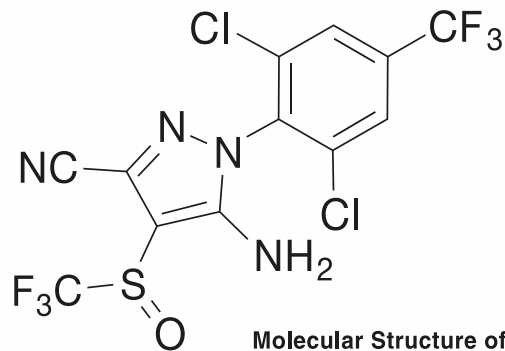
Damage to house

ADVANTAGES OF PRETECTOR

- **PRETECTOR** does not readily volatilize as it is in water-form.
- **PRETECTOR** binds tightly to the soil particles in which it is applied.

What is the mechanism of action of PRETECTOR ?

- **PRETECTOR** disrupts normal nerve function.
- **PRETECTOR** acts by blocking the GABA-gated chloride channels of neurons in the central nervous system, causing paralysis and death to termites.



Molecular Structure of Fipronil

Directions of Use :

SITE	PEST	USAGE RATE / 10 LITRE	METHOD OF TREATMENT
Building foundation site	Termites (<i>Coptotermes formosanus</i>)	120 ml	Pre-construction : Horizontal Barrier: Spray 4 litre/m ² solution. Use 5.5 litre/m ² under coarse-textured or sandy soil condition. Vertical Barrier: Spray 15 litre solution into 30 cm soil depth for every linear distance of 3 metre.
			Post-construction : Drill holes spacing of 40-60 cm. Inject 5 litre solution in each holes.