

DIRECTION FOR USE :

Infestation Level	German Cockroach (<i>Blattella germanica</i>)	American Cockroach (<i>Periplaneta americana</i>)
Normal	1 dot / linear metre or square metre (2.1 mg imidacloprid)	2 dot / linear metre or square metre (4.2 mg imidacloprid)
Severe	2 dot / linear metre or square metre (4.2 mg imidacloprid)	3 dot / linear metre or square metre (6.3 mg imidacloprid)

The recommended gel size is 5 mm in diameter, equivalent to 0.1 g **Preminator® Cockroach Bait**.

Monitor regularly. Re-apply as required or when eaten-off by cockroaches.

PREMINATOR® Cockroach Bait



Registered by :



IMASPRO RESOURCES SDN. BHD. (100955-M)

37, Jalan 5, Kaw. 16, Taman Intan, 41300 Klang, Selangor Darul Ehsan, Malaysia.
Tel : 603 - 3343 1633 Fax : 603 - 3343 1868 E-Mail : imaspro@imaspro.com

Before using our products read and carefully observe the instructions, warnings, statements and other information appearing on the product label.

READ THE PRODUCT LABEL BEFORE USE

JIRP.P/0307/164

PREMINATOR® Cockroach Bait





PREMINATOR® Cockroach Bait



Cockroach

In urban housing, cockroaches can be considered as pest as they can contaminate food via faeces, moulted skin etc. They can damage clothes and books by chewing and soiling. Cockroaches are mechanical vectors (carrier of human diseases) because their bodies may carry germs which can be transferred to human when they forage their food. Some people may get asthma and Entomophia due to allergy to cockroaches. The obnoxious habits of cockroaches will develop bad odour, stains, carcasses, old skin, faecal waste, unhealthy and unpleasant environment to the residents.

The German cockroach and the American cockroach are the most common species in Malaysia. German cockroaches usually present in kitchens while American cockroaches can be found in the kitchen, tank, sewage and outdoor.

Life Cycle of Cockroach

The cockroach passes through 3 life stages:

1. Egg
2. Nymph
3. Adult

Egg:

Ootheca are the eggs in a group in a capsule laid by cockroaches. Each ootheca contains 4-48 eggs. It can either be deposited in suitable places or carried externally.

Nymph:

Hatching nymphs are similar to adult but they are smaller, wingless and have undeveloped sexual organs. They are extremely active during this period.

Adult:

Nymphs grow and molt several times (depending on species) before becoming adults. The adult female cockroach has to incubate the eggs for 20-28 days and will drop 1-4 ootheca.

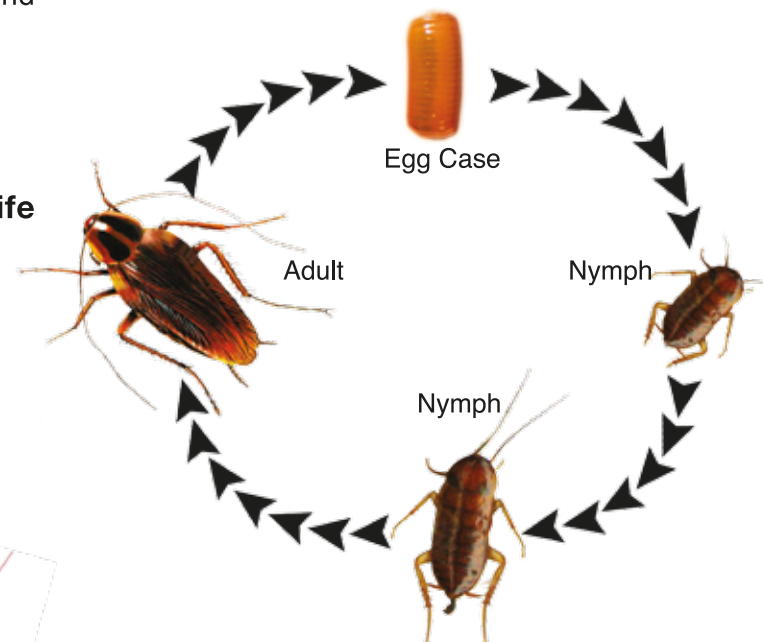


Figure 1 : Life-cycle of cockroach

Difficult to Eliminate Cockroaches

1. Gravid females of German cockroach will stop feeding and drinking in the last week before their ootheca hatch so they will stay in dark warm harborages when not foraging for food and water.
2. Cockroaches are nocturnal and good climbers and can fit into small cracks due to their compressed shape.
3. Young nymph can hide in as small as 1 mm cracks.
4. Cockroaches can detect and avoid common pesticides.

PREMINATOR® Cockroach Bait Can Help You !

Imidacloprid is the active ingredient in **PREMINATOR® Cockroach Bait**. It is a systemic insecticide, with contact and stomach action.

PREMINATOR® Cockroach Bait is scientifically designed to optimize the attraction and kill cockroaches. Product design and pack configuration of **PREMINATOR® Cockroach Bait** are suited to target costs. It can be applied on cracks, crevices, joints, seams, corners, frames, baseboards and spaces where they can hide. To eliminate the cockroaches, **PREMINATOR® Cockroach Bait** has to be applied in kitchens, storage areas, basements, areas around plumbing and garbage storage, but not to be applied on surfaces which are frequently washed and on areas very near to food and food preparation areas.

PREMINATOR® Cockroach Bait is a slow knock-down pesticide due to the delayed lethal effect. It ensures that the infected cockroach has enough time to transfer the active ingredient to other cockroaches by each others' faeces.

Key features of PREMINATOR® Cockroach Bait

- White gel
- Long lasting
- Minimum 2 years shelf life from date of manufacture

