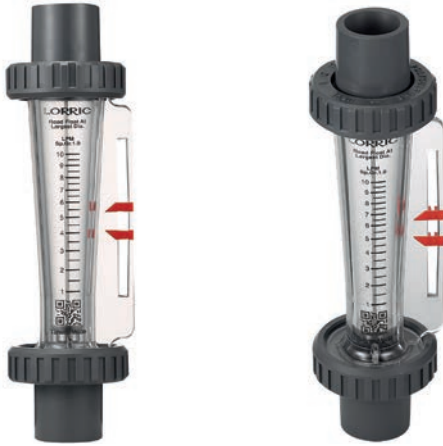


F20Series - 192mm middle size pipe size 1/2"-3/4" **F20 series**

This product will stop production by December 31st, 2018.



Product Features · Use

- Patented dual-indicator design for easy and clear flow range management.
- Laser engraved degree scales provide better readability and longer life.
- Available in customizable units, temperature, and molecular weight.
- Each batch of flow meters will be calibrated before delivery for our best precision guarantee.
- Perpendicular joint is available for space saving installation.
- Hastelloy float is available for corrosive environment.

Standard Specs

- Model: F20PC, F20PSU, F20H PSU
- Adaptor Size: 1/2", 3/4"
- Applicable Fluid: Liquid
- Flow direction: From the bottom up
- Engraved degree scales: Laser engraved degree scales
- Fluid Temperature: 50°C (Standard: UPVC adaptor)
60°C (PP adaptor)
100°C (PSU adaptor)
- Working Pressure: 6.0kg/cm²
- Full Scale Accuracy: ±5% F.S.
- Product Material
 - Body - PC, PSU
 - Float - Stainless 316, Ti, Hastelloy C
 - Guide Rod - Stainless 316, Ti, Hastelloy C
 - Guide Rod Bottom - UPVC, PSU
 - Adaptor - Welding Type: UPVC
 - Male, Female Thread: UPVC, PP, PSU
 - Butt-fusion Adaptor: PP
 - Panel Elbow Thread: UPVC, PVC
 - Union Nuts - UPVC, Aluminum
 - O-ring - EPDM, VITON
- Adaptor Material
 - Welding Type, Male Thread, Female Thread, Butt-fusion Adaptor

※BSPT is standard thread type. NPT is available for custom order.

Scale Range

Product Code	Scale Range※	Standard gravity
F20 (PC, PSU, H PSU) - 10LPM	1.0-10 L/min	1.0
F20 (PC, PSU, H PSU) - 15LPM	1.5-15 L/min	1.0
F20 (PC, PSU, H PSU) - 20LPM	2.0-20 L/min	1.0
F20 (PC, PSU, H PSU) - 30LPM	3.0-30 L/min	1.0
F20 (PC, PSU, H PSU) - 40LPM	4.0-40 L/min	1.0
F20 (PC, PSU, H PSU) - 50LPM	5.0-50 L/min	1.0

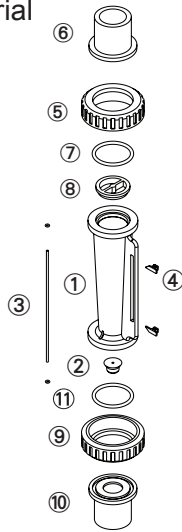
※ Liquid flow meters are calibrated for 20°C water.

Maximum working temperature for different adaptor materials

Adaptor Types	Maximum working temperature materials		
	~ 50°C	~ 60°C	~ 100°C
Welding Type	UPVC	-	-
Male / Female Thread	UPVC	PP	PSU
Butt-fusion Adaptor	PP	PP	-
Panel Elbow Male Thread	UPVC	-	-

※ When maximum working temperature is over 50°C, the material for guide rod bottom and union nuts have to be PSU and aluminium.

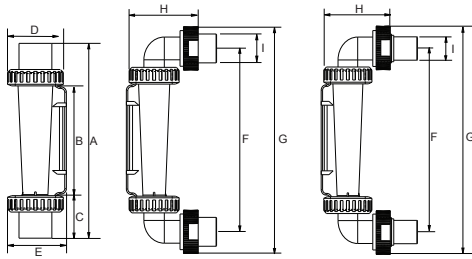
Parts Material



No.	Series	Material (Main material)* 1			
		1	2	3	4
1	Body	PC	PSU	PSU	PSU
2	Float	S316	S316	Hastelloy C	Hastelloy C
3	Guide Rod	S316	S316	Ti	Hastelloy C
4	Pointer	ABS	ABS	ABS	ABS
5,10	Union Nuts	UPVC	UPVC	UPVC	PSU
6,11	Adaptor	UPVC	UPVC	UPVC	PSU**2
7,9	O-ring	EPDM	VITON	VITON	VITON
8	Guide Rod Bottom	UPVC	UPVC	PSU	PSU

※ 1. Material for different parts is optional for each flowmeter.
 ※ 2. For thread adaptor only.

Parts Size



Adaptor Material	A	B	C	D	E	F	G	H	I
3/4" Male Thread	192	104	44	51	56.5	-	-	-	-
3/4" Female Thread	189	104	42.5	51	56.5	-	-	-	-
3/4" JIS	199	104	47.5	51	56.5	-	-	-	-
PP OD32 ID26	181	104	38.5	51	56.5	-	-	-	-
PP OD32.2 ID26.2	192	104	44	51	56.5	-	-	-	-
1/2" Male Thread	192	104	44	51	56.5	-	-	-	-
1/2" Female Thread	184	104	40	51	56.5	-	-	-	-
1/2" JIS	185	104	40.5	51	56.5	-	-	-	-
3/4" PT Panel Elbow Male Thread	-	104	-	51	56.5	180	219	55	27

Unit: mm

Specification inquiry (F20)

※ Contact us with below information.

- Fluid - Water Other _____
 - Specific gravity - Standard-1.0 Other _____
 - Pressure - Standard-6.0kg/cm² Other ___ kg/cm²
 - Temperature - Normal temperature Other ____ °C
 - Scale Range - _____ L/min ~ _____ L/min
 - Adaptor Size - 3/4" JIS Other _____
 - Adaptor Material - Welding Type Male Thread
 - Female Thread Butt-fusion Adaptor
 - Panel Elbow Thread Other _____
 - Material
 - 1 Body PC 2 Body PSU
 - 3 Body PSU Hastelloy C Float, Ti Guide Rod
 - 4 Body PSU Hastelloy C Float & Guide Rod Adaptor PSU (for high working temperature)
 - 5 Other
- Specs besides above listed information _____