

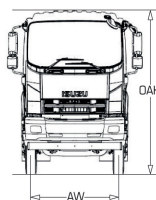
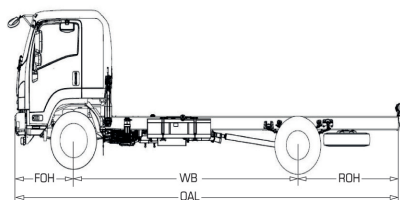
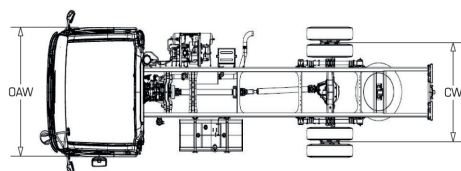
# ALL-NEW ISUZU FORWARD FSR PRO

## YOUR SMART CHOICE



**4 x 2 RIGID**

**FSR PRO**  
GVW 11,000kg



DIMENSIONS			FSR90SU-NC
Overall Length	OAL	mm	8,155
Overall Width	OAW	mm	2,200
Overall Height	OAH	mm	2,680
Wheelbase	WB	mm	4,770
Front Overhang	FOH	mm	1,255
Rear Overhang	ROH	mm	2,130
Front Tread	AW	mm	1,795
Rear Tread	CW	mm	1,700

**ISUZU**  
**FORWARD**



## SPECIFICATION SHEET

### MODEL CODE

**FSR  
PRO**
**FSR90SU-NC**

Drive Train		4 x 2
ENGINE		
Model		4HK1 - TCS
Type		4-cylinder In-line, 4-cycle, Water-Cooled, OHC, Turbo with Intercooler
Displacement	cc	5,193
Bore x Stroke	mm	115 x 125
Compression Ratio		17.5:1
Maximum Output	kW [PS] @ rpm	154 [210] @ 2,600
Maximum Torque	Nm [kgm] @ rpm	638 [65] @ 1,600
Emission Level		Euro 2
Fuel System		Common Rail Direct Injection
WEIGHT & CAPACITIES		
Gross Vehicle Weight (Design)	kg	11,000
Curb Weight	kg	3,699
Front	kg	2,242
Rear	kg	1,457
Fuel Tank Capacity	l	200
AXLE		
Front	Type	Reverse ellipt; I Beam
Front Axle Capacity (Design)	kg	3,600
Rear	Type	Banjo, Full Floating
Rear Axle Capacity (Design)	kg	7,700
Total Axle Capacity (Design)	kg	11,300
SUSPENSION SYSTEM		
Type	Front	Semi Elliptical Alloy Steel Leaf Spring with Hydraulic Double Acting Telescopic Shock Absorber
	Rear	
TYRES & WHEELS		
Tyres		8.25R 20 - 14PR
Wheels		20 X 6.50T
BRAKES		
Service		Air Over Hydraulic (AOH), Dual Circuit, Front & Rear Leading Trailing
Parking Brake Type		Mechanical Expansion Type, Located at the Rear End of Transmission
Auxiliary		Exhaust Brake
STEERING		
Steering System		Hydraulic Integral Recirculating Ball
Min. Turning Radius	m	8.29
ELECTRICAL		
Battery		24V
Alternator		24V-50A

Isuzu Malaysia Sdn. Bhd. is engaged in an ongoing research and development programme, and reserves the right to change specifications, resulting in advancements or technical refinements, without prior notice. All product specifications are within normal manufacturing allowances and tolerances.



United Nations Economic Commission for Europe (UNECE) Regulations contain provisions for automotive related to safety and environmental aspects at global standard.

**ISUZU**
**ISUZU MALAYSIA SDN BHD** (664946-H)

501D, LEVEL 5, TOWER D, UPTOWN 5,  
NO 5, JALAN SS21/39, DAMANSARA UPTOWN,  
47400 PETALING JAYA, SELANGOR DARUL EHSAN.

GENERAL LINE: 03-7723 9777 FAX: 03-7723 9779  
HOTLINE: 1-300-88-1133 www.isuzu.net.my



\* Terms and conditions apply



Reliable support with  
round-the-clock  
business operation.

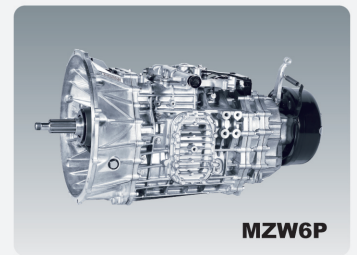
1-800-88-8000



Accessories  
Warranty Varies



Optimum Combination of Powertrain



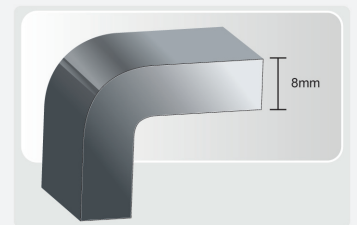
Bigger Cabin Space



Ergonomic Instrument  
Panel Design



Six Outer Rear View Mirrors  
UNECE regulation compliant.



Strong Frame Chassis  
with Reinforcement

	TRANSMISSION							
	Gear Ratio							
	1st	2nd	3rd	4th	5th	6th	Reverse	Final
<b>FSR90SU-NC</b> 6-Speed Manual (MZW6P)	6.615	4.095	2.358	1.531	1.000	0.722	6.615	5.571

### Dealer's information