



貼紮系列產品定位

前瞻性高機能護具

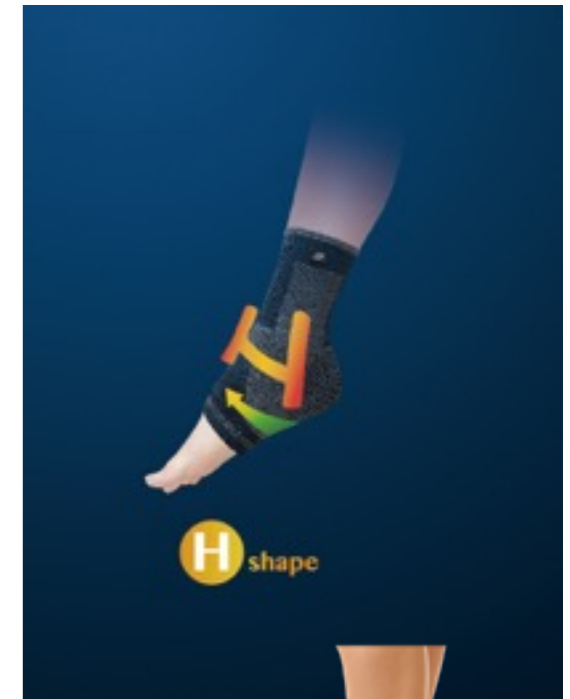
Prospective high-functionality supports



品牌願景

活力動力滿分

Maximize your Energy and Vigor





產品定位

立體環繞 貼近身形

Three - Dimensional encompass and fitness



觸感 Fabric Handle:

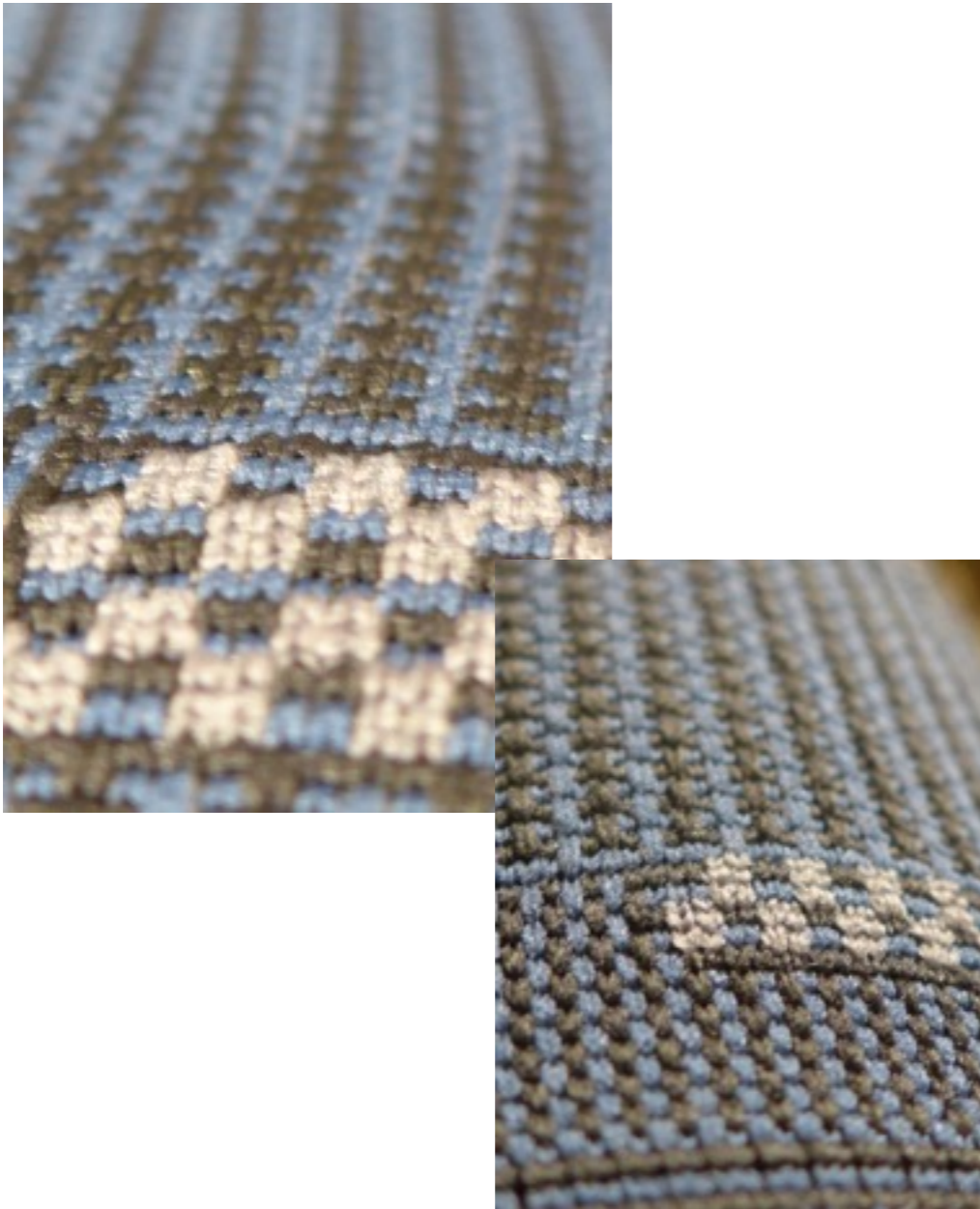
1. 彎度時高柔軟性穿著
High Flexibility in any curvature
2. 高記憶性的彈性纖維
High Shape memory elastic fibers
3. 高舒適性的服貼身形
High fit to body shape

效益：

1. 行動時不易移位
Not prone to dislocation in your movement
2. 符合任何身形 Fit to any stature
3. 高彈性的穩定度 Small elastic deformation
4. 大幅降低穿著束縛性
Significant reduction of wearing restraint

整體效能 Overall Performance：

高精密數位織法，針對行動給與的高支撐力，並強化行動彎度的高舒適性穿著感。High-precision digital weaving technique gives high support to any movement and highly enhances wearing comfort for any curvature.



觸感 Fabric Handle :

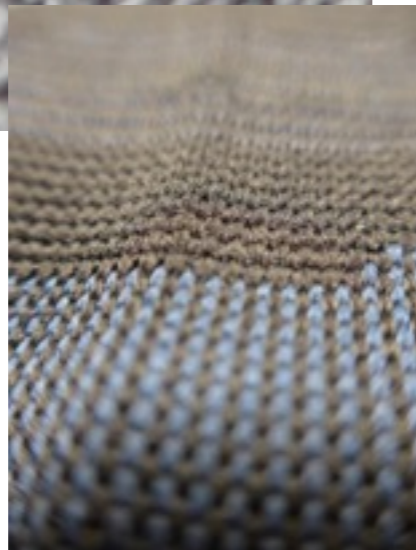
1. 新世代高舒適性觸感
Highly comfortable fabric handle of new generation
2. 強大延展性的包覆感
Feeling of being wrapped with strong ductility
3. 高穩定性的行動支撐
Highly stable support to your movement
4. 高透氣循環感 High sense of breathable circulation

效益 Benefit :

1. 增強包覆穩定度 Enhance wrapping stability
2. 穿著不緊縮及不易滑落
Wearing that not tight not easy to slip off
3. 降低行動束縛感 Reduce the sense of movement restraint
4. 清晰穿戴定位的視覺引導
Visual guidance for clear wearing positioning
5. 舒緩降低長時間穿著腫脹感
Soothe and reduce swelling due to long-time
6. 創新透氣洞設計 Design of innovative breathable holes
7. 運用雙層線紗包覆彈性纖維Lycra增強壓力釋放度
Use of double yarn-covered elastic fiber Lycra to enhance the release of pressure
8. 強化肢體行動的緊密角度
Strengthen the conformity angle to your physical movement

整體效益 Overall benefit :

雙層彈性纖維Lycra紗線創造穩定性的包覆感，讓穿著束縛壓力釋放，延長穿著時間。 **Lycra yarns with double-layered elastic fibers create a stable and comfortable feeling of being wrapped so as to allow the wearer to release wearing pressure and prolong wearing time.**



觸感 Fabric Handle :

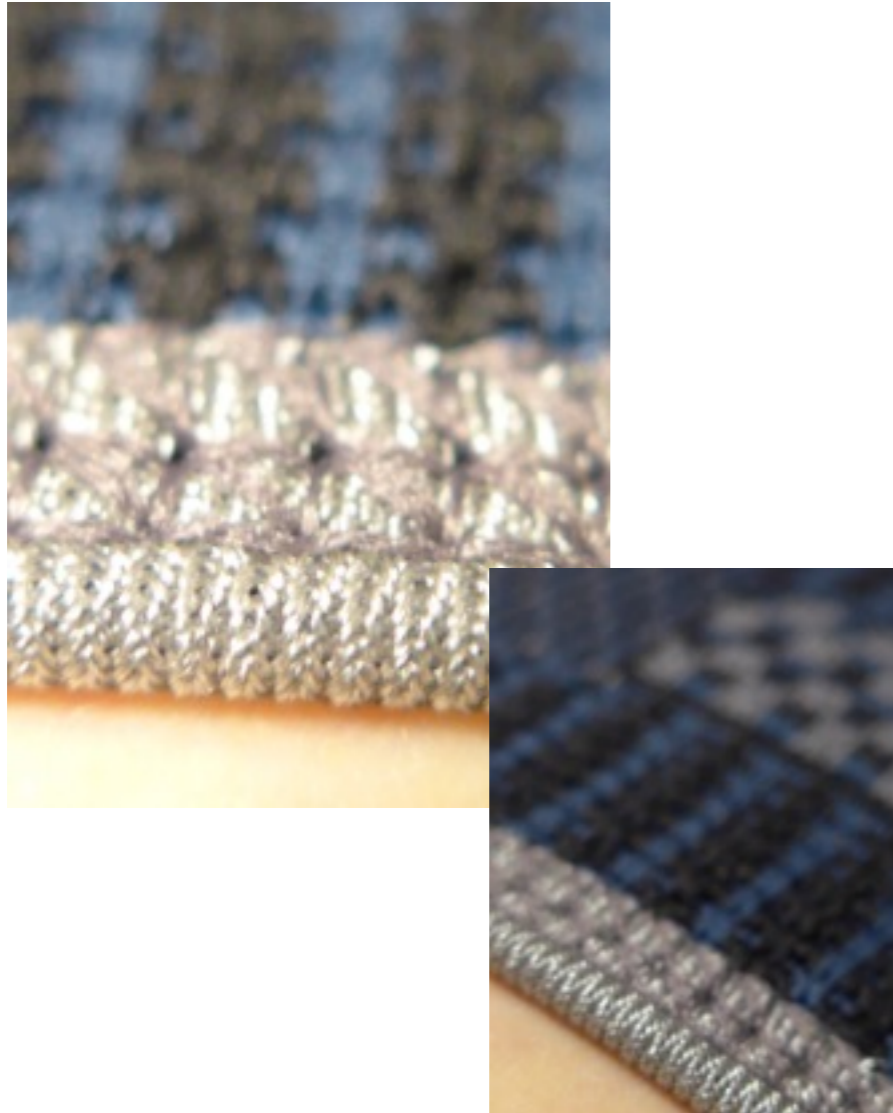
1. 特殊貼紮織紋引導 Special sticking texture-guided
2. 高舒適度包覆兩側膝蓋骨
High comfort in covering both sides of the knee bone
3. 穿著延展性強 Strong wearing ductility
4. 增強自我照護效果 Enhanced self-care effect
5. 紓解穿著束縛感 Relief of sense of bondage

效益 Benefit :

1. 因應強化膝蓋骨穩定需要，運用特殊織法均分穿著壓力值，延長穿著時間
In response to the need to strengthen the stability of the knee bone , a special weaving technique is used to evenly spread the pressure value and extend the wearing time.
2. 交錯運用兩種織紋，創造膝蓋骨兩側穿著舒適度，創造高舒適度的包覆效果
Two weaving patterns are interlaced to create a highly comfortable wrapping effect to fit on both sides of the knee-bone
3. 設計符合自然肌肉紋理走向織紋，增強自體修復及自我照護效能
Designed to conform to the muscle texture in a nature way , it enhances self-healing and self-care effectiveness.

整體效益 Overall benefit :

特殊設計貼紮織紋穩定包覆膝蓋骨，增強自我照護功能，延展穿著時間。 **Specially designed sticking texture can stably wrap up the knee bone to enhance self-care function and extend the wearing time.**



觸感 Fabric Handle :

1. 容易穿戴 Easy to wear
2. 不易滑落 Not easy to slip off
3. 降低穿戴痕跡 Reduce the wearing marks

效益 Benefit:

1. 上緣用高彈性的織法創造穿戴服貼性
Highly elastic weaving technique is applied on the top edge to create wearing fitness
2. 下緣用微電腦精密計算，創新肌膚穿戴服貼性
Microcomputers are used to precisely position the lower edge to create wearing fitness for your skin
3. 舒緩穿著壓力值，延長穿著時間。
Soothe wearing press and extend the wearing time.

整體效益 Overall benefit :

運用數位精密織紋提供穿著服貼感，並運用提花織紋增加視覺美感，也舒緩穿著壓迫感，延長穿著時間。
Digital precision weaving techniques are used to provide wearing fitness to for your skin while jacquard weaving techniques are used to increase visual beauty. It not only soothes the wearing pressure but also extends the wearing time.