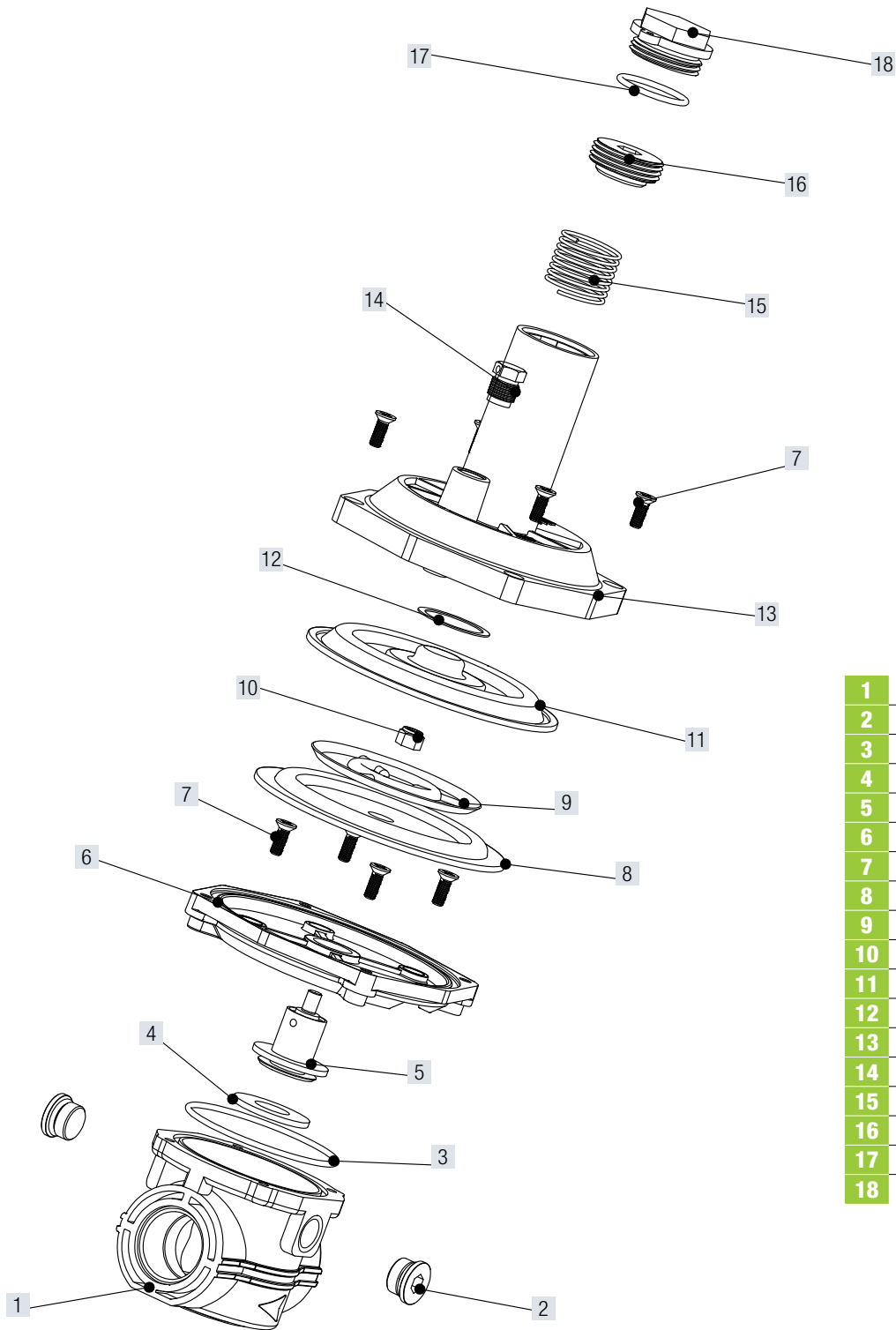


ASSEMBLY OVERVIEW



- | | |
|----|------------------------|
| 1 | Body |
| 2 | Screw plugs |
| 3 | O ring |
| 4 | Gasket |
| 5 | Shaft |
| 6 | Flange adapter |
| 7 | Screw |
| 8 | Compensation Diaphragm |
| 9 | Disc |
| 10 | Nut |
| 11 | Safety diaphragm |
| 12 | Washer |
| 13 | Upper cover |
| 14 | Safety vent |
| 15 | Spring |
| 16 | Spring compressor |
| 17 | O ring |
| 18 | Seal cap |