

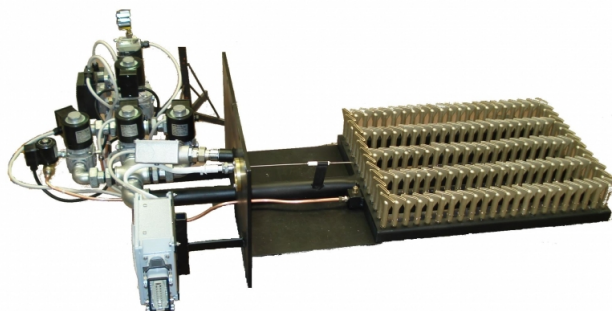
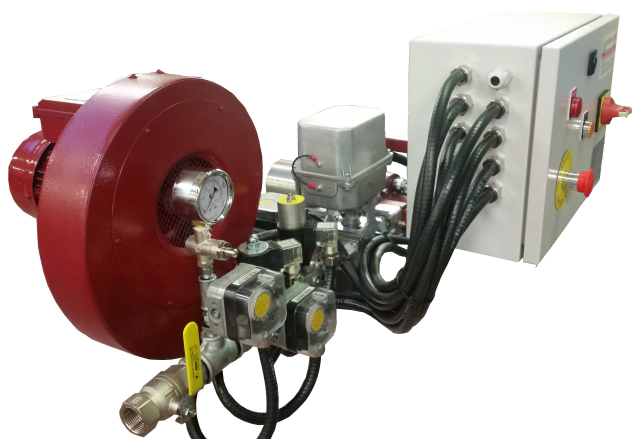


Bruciatori Santin

MonoBlock/Packaging Design

MADE IN ITALY

[Bulletin 170-1 MonoBlock-Packaging Design – 10/11/2016-]



Description

Bruciatori Santin can offer for every burners and nozzles models, a compact monoblock solution with: gas train, air pipe with blower and command panel.

No matter how the burner is big, we can develop compact solution for you.

Every solution is available with custom gas and air inlet orientation.

Customer can choose gas train system who prefers; with governor, with levers adjustment etc, customer can also compose the gas train according to his needs, applications and standards.

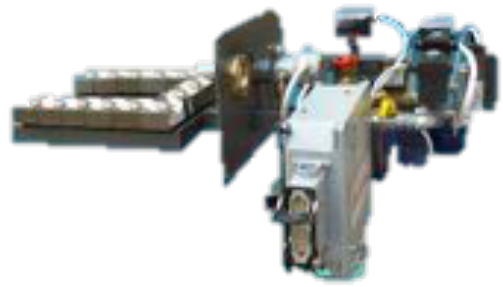
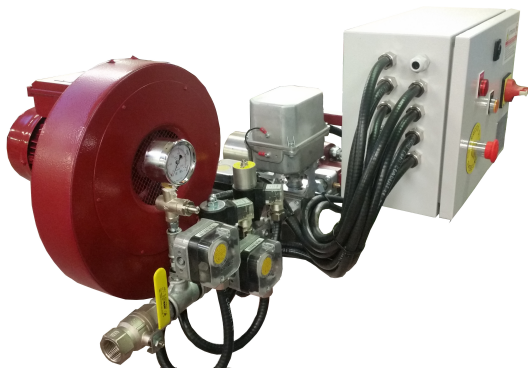
See document 1002-1 for command panel datasheet and see document 1003-1 for gas train solutions

Bruciatori Santin monoblock burners are offered in the EN746-2 standards with CE marked components and NFPA series utilizing UL, CSA and FM components.

Gas train are developed using brands as: Madas, Econex, Dungs and Krom-Schroder components.

Some Examples

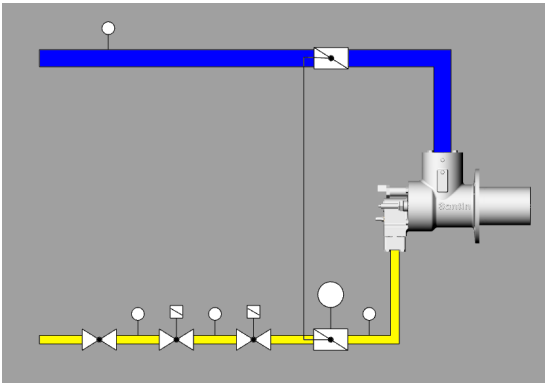




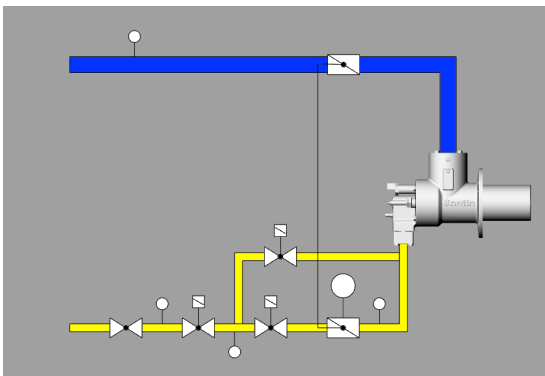
Bruciatori Santin compact solutions are available for any industrial application:

- Ovens
- Furnaces
- Kilns
- Tanks
- Boilers
- Dryers
- Ducts
- Kettles
- Industrial ladles
- Others

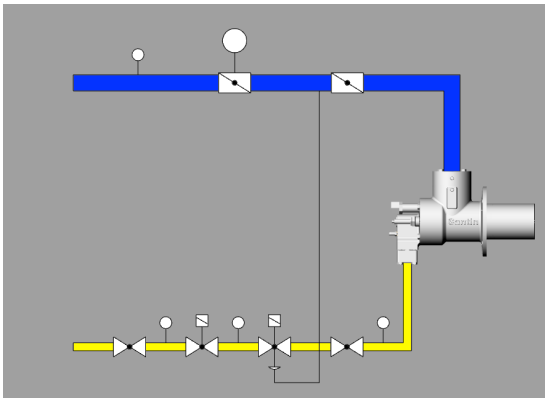
Examples of application



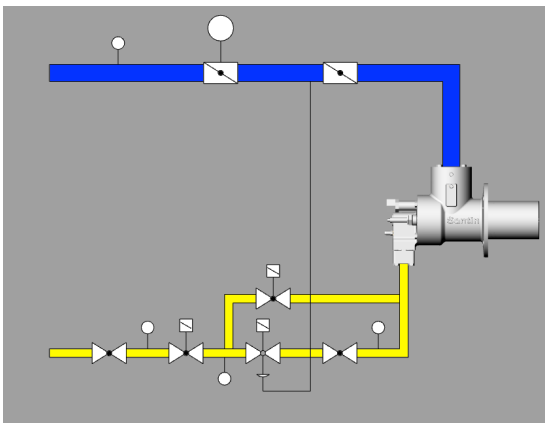
Solution available in every working mode listed in page 6 with actuator and butterfly valve installed in the gas line and with levers to manage the stoichiometric ratio. Minimum and maximum gas pressure switches installed in the gas train and air pressure switch in the air pipe. Tightness control installed between the safety gas solenoids.



Solution available in every working mode listed in page 6 with actuator and butterfly valve installed in the gas line and with levers to manage the stoichiometric ratio. Minimum and maximum gas pressure switches installed in the gas train and air pressure switch in the air pipe. Tightness control installed between the safety gas solenoids. Pilot (or stating small flame)safety solenoids in the pilot line. This solution allows to avoid over temperature issues when small flame is needed



Solution available in every working mode listed in page 6 with actuator and butterfly valve installed in the air pipe. Air/gas ratio control valve installed on the gas line, allow to have the correct stoichiometric ratio needed. Minimum and maximum gas pressure switches installed in the gas train and air pressure switch in the air pipe. Tightness control installed between the safety gas solenoids.



Solution available in every working mode listed in page 6 with actuator and butterfly valve installed in the air pipe. Air/gas ratio control valve installed on the gas line, allow to have the correct stoichiometric ratio needed. Minimum and maximum gas pressure switches installed in the gas train and air pressure switch in the air pipe. Tightness control installed between the safety gas solenoids. Pilot (or stating small flame) safety solenoids in the pilot line. This solution allows to avoid over temperature issues when small flame is needed

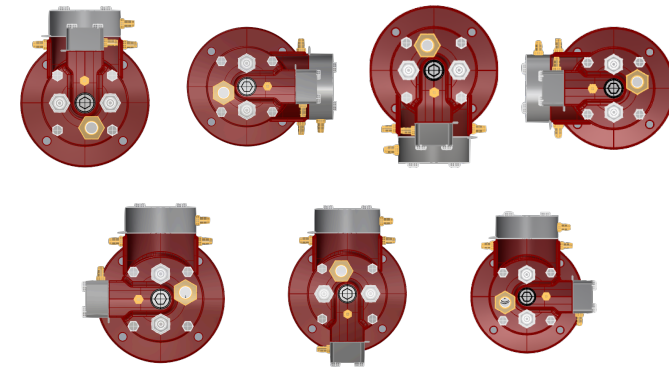
Easy order

General data:

- Application: _____
- Real KW: _____
- Gas type: _____
- Gas pressure (mbar): _____
- Back pressure: Yes - No
If yes, write the value (mbar): _____
- Suction pressure: Yes - No
If yes, write the value (mbar): _____
- Brand preferences: Madas - KromSchroder - Dungs
- Air / gas orientation: _____

Other indications:

Orientations Examples



Here above, some examples of gas orientation. Many other solutions are available as frontal gas train or gas train with 2/3 bends for tight spaces. Please write in "Other indications" your orientation preferences if different than picture above.

Burner model	1	2	3	4	5	6	7

1.Voltage:

110V-----110

230V-----230

2.Operating modes

One-stage-----1

Two-stages 230/110V-----2

Two-stages 4.20mA-----3

Three-stages 230/110V (V*) -----4

Three-stages 230/110V (A*) -----5

Three-stages 230/110V (4.20mA) ----6

Modulating 230V-----7

Modulating 4.20mA-----8

3.TC - Tightness control*

Yes-----Y

NO-----N

4.Air /Gas adjustment

Lever-----L

Governor-----G

5. Blower**

110V-----110
 230V-----230
 400V-----400
 Without Blower-----WB

6. Blower always on

Yes-----Y
 No-----N

7. Panel position*:**

Compact -----C
 On the wall / machine -----S
 Without panel -----NP

*From 800.000 Kcal/h tightness control is mandatory. Tightness control model depends of control unit utilised.

**For burners bigger than 800.000 Kcal/h we always use separate blower.

***See datasheet 1002-1 for control panel composition.

For other voltages, or special solutions please contact our technical support at tecnico@bruciatorisantin.com

- Bruciatori Industriali Santin riserva il diritto di modificare e variare i prodotti senza obbligo di notifica.
- Tutti di dati / grafici indicati e presentati in questo documento sono approssimativi.
- The performances mentioned are indicative. Performance and dimensions are guidelines only. The information contained in this catalogue is updated at the time of printing but can be changed without notice or obligation to notify.
- All data / graphs shown in this document are approximate.

Contatti:

Contacts:

Commerciale/Sales: alessandro@bruciatorisantin.com

Tecnico/Technical: tecnico@bruciatorisantin.com

Tel./Phone. +39 02 99813074

Fax. +39 02 99814391