



SUNGROW

New Three-phase Inverter Family



SG5.0/6.0/7.0/8.0/10/12RT
SG15/17/20RT



CONTENT

**HIGH
YIELD**

**SAFE
AND
DURABLE**

**SIMPLE
AND
FAST**

**INTELLIGENT
MANAGE
-MENT**

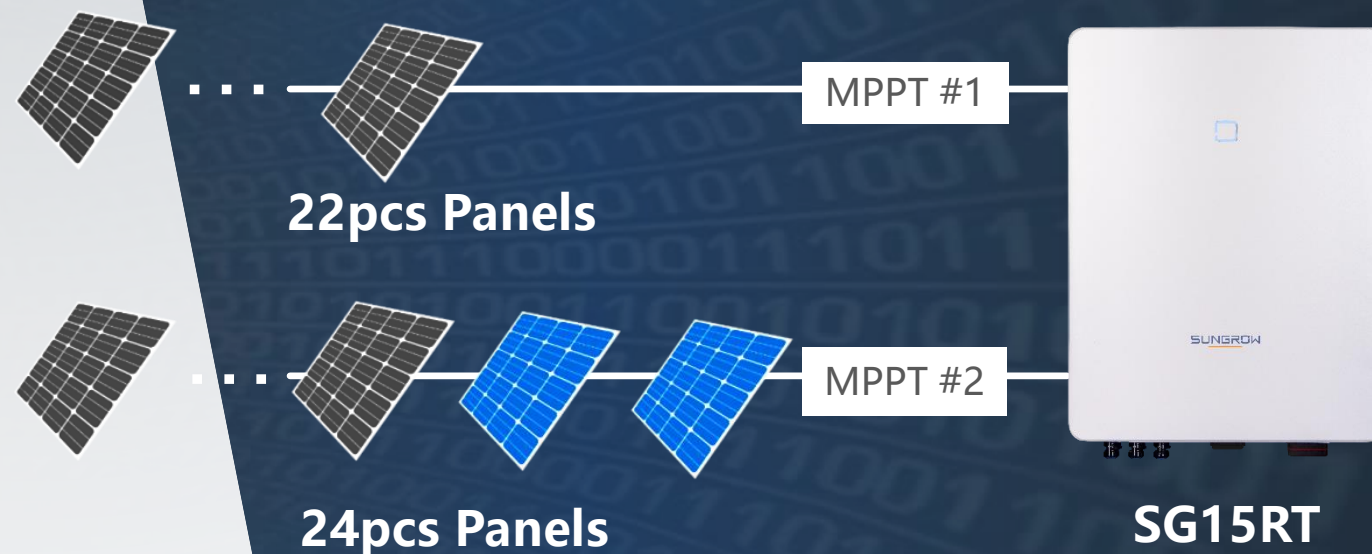
REFERENCE



HIGH
YIELD

More DC Input

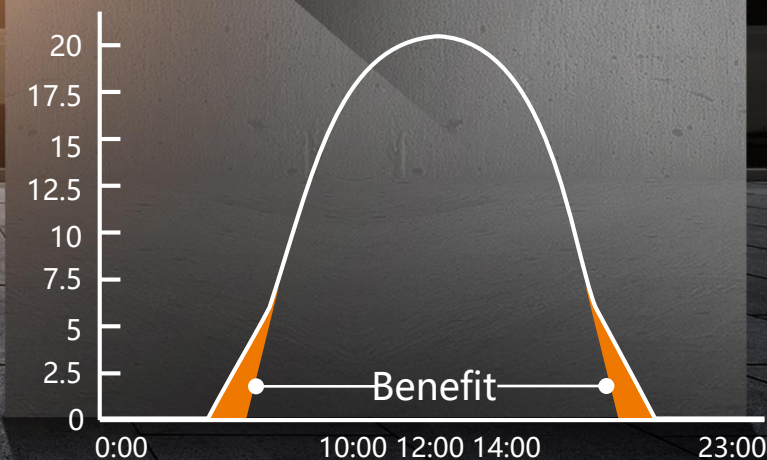
- Support PV input up to **1100V**
- Power generation increased by **2%**
- High DC/AC Ratio **1.5**
- Lower DC line loss



LR4-60HPH 370Wp

Longer Serving Time

- Low startup voltage **180V**
- Wide MPP voltage range **160~1000V**
- Continuously work even under weak sunshine

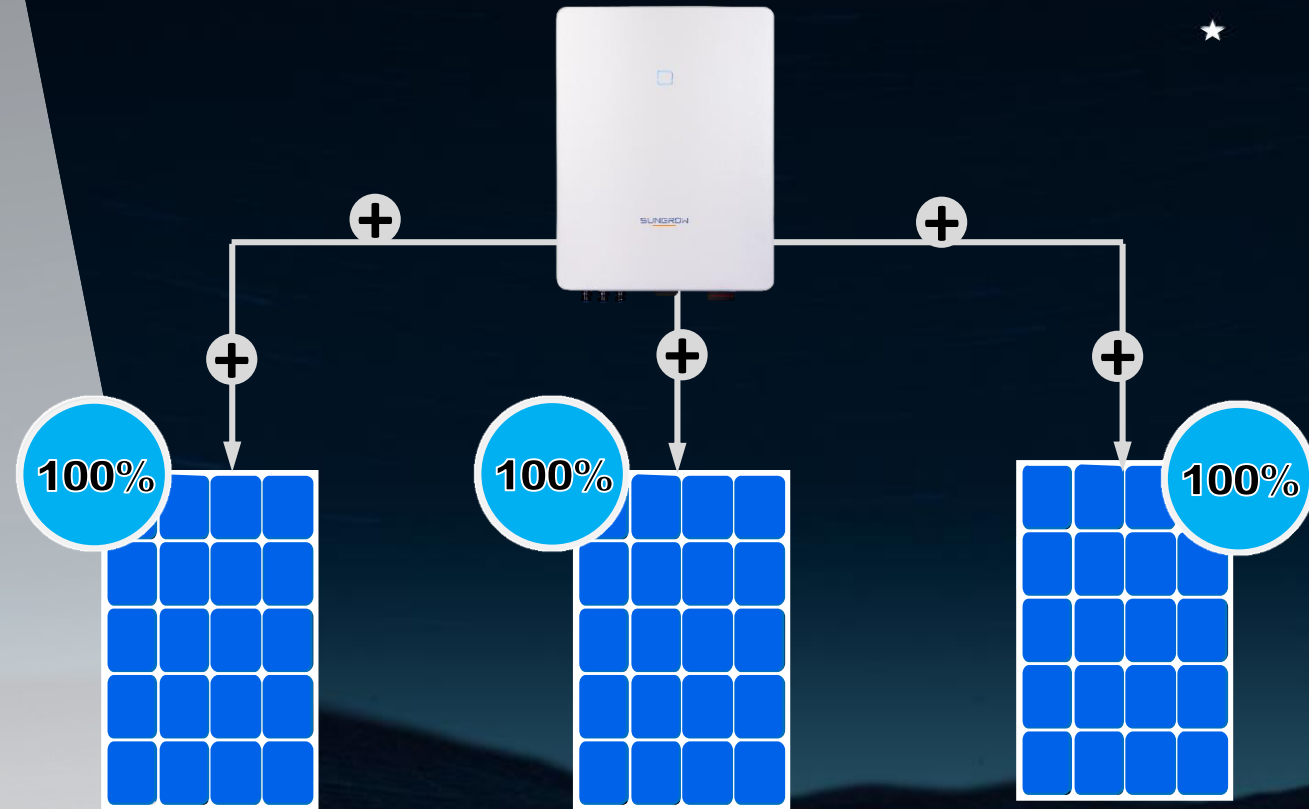


PID Recovery

- Built-in PID module, active repairing
 - PV panels fully recovery
 - Patented and advanced algorithm
-
- **Example:** In a 5.5MW project in Shenzhen, the modules showed different degrees of attenuation. After 42 hours of PID repair.

Randomly select 2 modules, test parameters before and after PID repair

Parameter item	Isc	Voc	I _{max}	V _{max}	P _{max}
Nominal value	8.65	37.5	8.14	29.5	240
#1 module after weaken	8.35	36.9	7.89	28.9	228
#1 module after repair	9.05	37.23	8.27	29.98	248
#2 module after weaken	8.47	36.84	8.02	28.8	231
#2 module after repair	8.92	37.22	8.22	30.08	247





SAFE AND
DURABLE

Built-in Surge Arresters & RCD



- **Type II** SPD for AC&DC side
- **Up to 22KA** discharge current
- **Support 6kA** discharge current in communication port

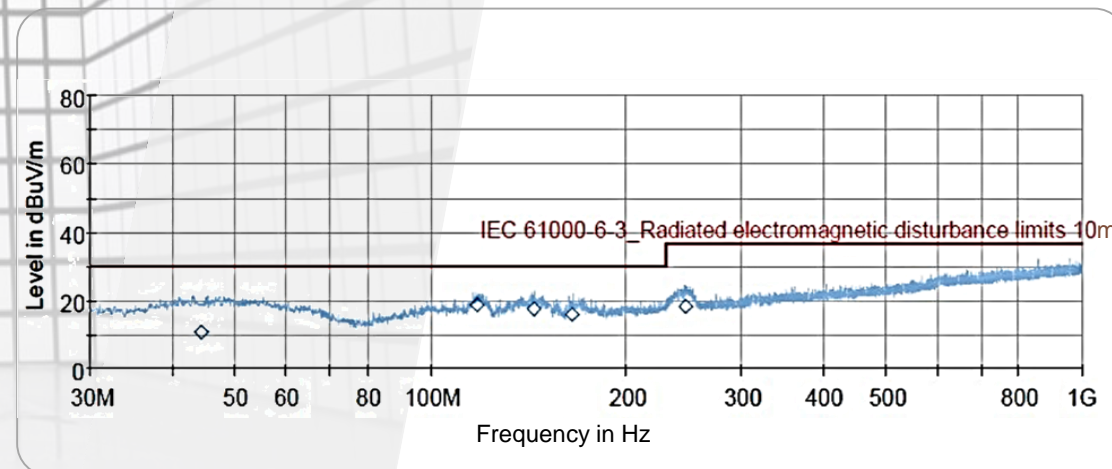
AFCI Function

- **Precautionary protection:** DC side health diagnosis
- Three-level detection up to **99.9% accuracy**
- **Rapid shutdown** to avoid property loss
- **Advanced** "Dual closed-loop self-learning" algorithm

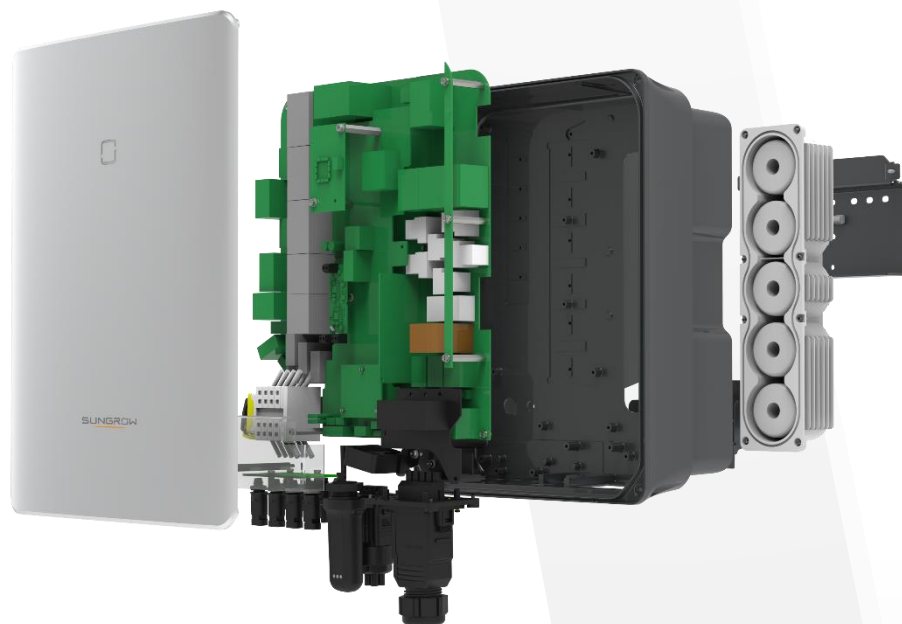
Healthy EMC Design

SUNGROW

- **Home-Appliance** level Radiation
- **World-Class** EMC test platform
- Much lower than **Class B**

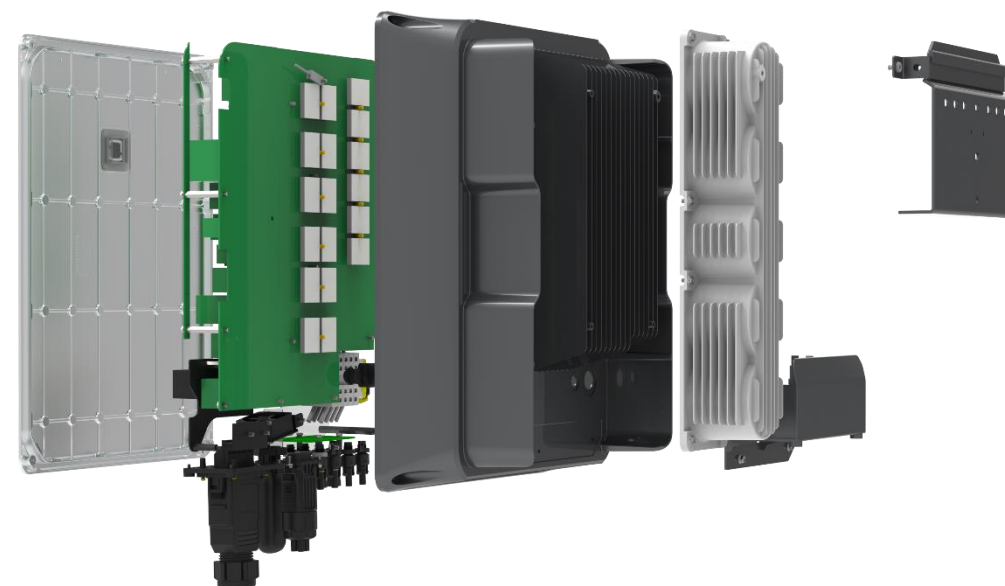


Protective Casing



C5

Double layer **electrostatic spraying**
Adapt to harsh environment



IP65

Die cast aluminum alloy casing
high thermal conductivity, high strength



SIMPLE AND
FAST

Fast Connector



COM. port

- Patented terminal
- Support 25mm conduit
- Push in , Screwdriver Free



PUSH-IN CONNECTORS

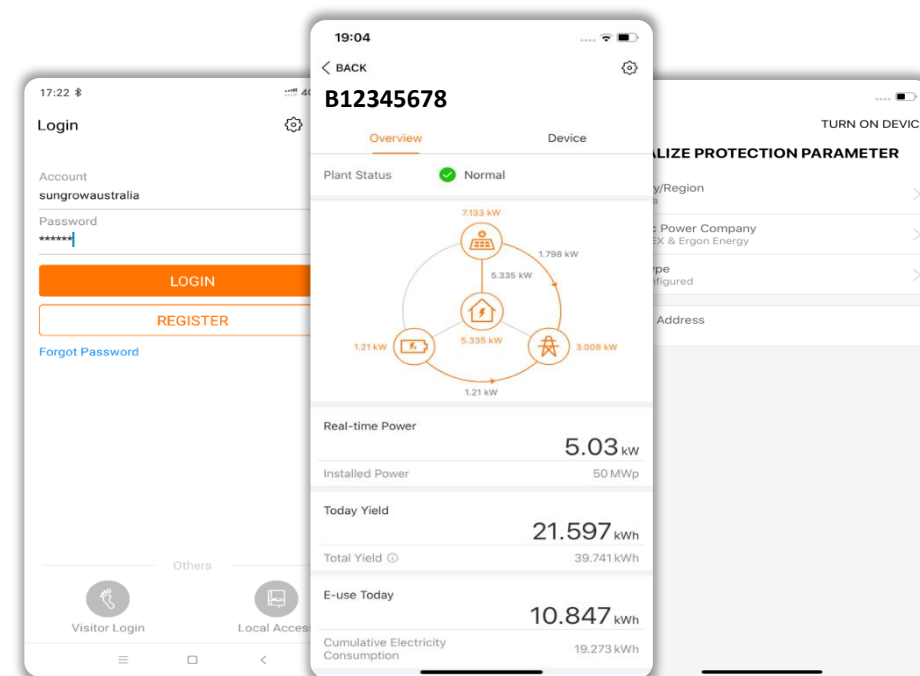
Push - Click - Go

One-click Initialization

SUNGROW

iSolarCloud

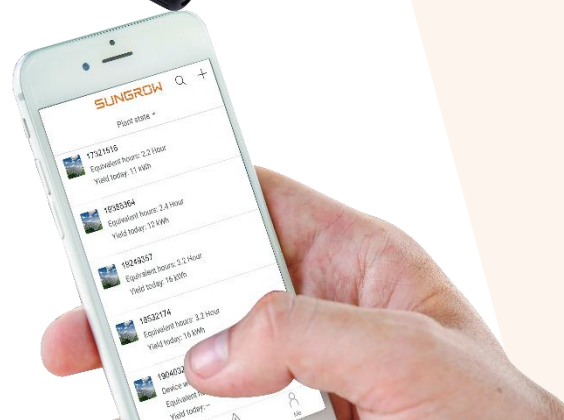
- One-click to build your own plant
- Support remote and local access





INTELLIGENT MANAGEMENT

Advanced Monitoring Package



WiNet



EyeM4(4G)



Smart Meter



iSolarCloud

WiNet



Intelligent management

- sec-level data interval
- Multi-path data uploading
- IV scan function
- Fault recorder



Easy deployment

- Plug and play
- Support WLAN and Ethernet

NEW



EyeM4(4G)

SUNGROW
Clean power for all



Intelligent management

- Support 2G/3G/4G Communication
- Built-in Web server

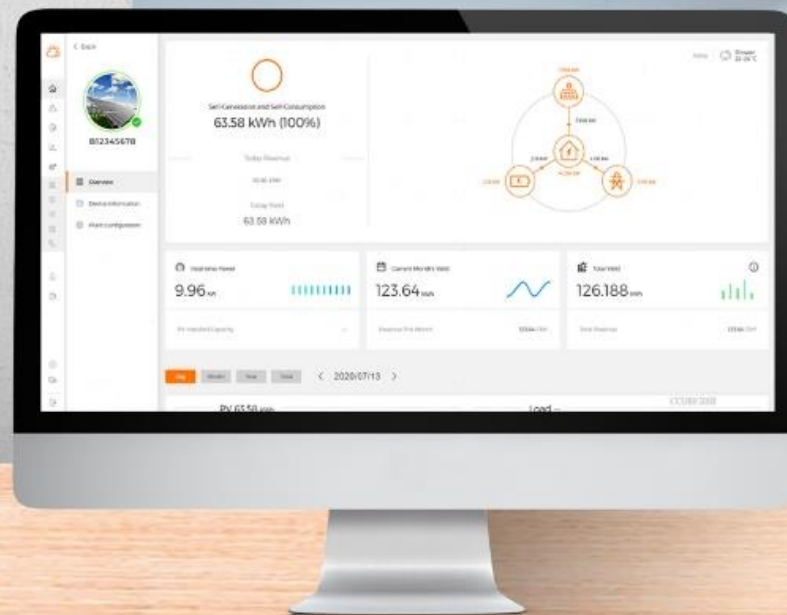


Easy deployment

- Plug and play
- Connects up to 10 devices
- One-click access to iSolarCloud



7*24H Live Monitoring



10s Live Data

SG20RT(COM1-001)_001_001

Plant Name: Y2007100052 Device Model: SG20RT

General Information

Active Fault

Closed Fault

Chart

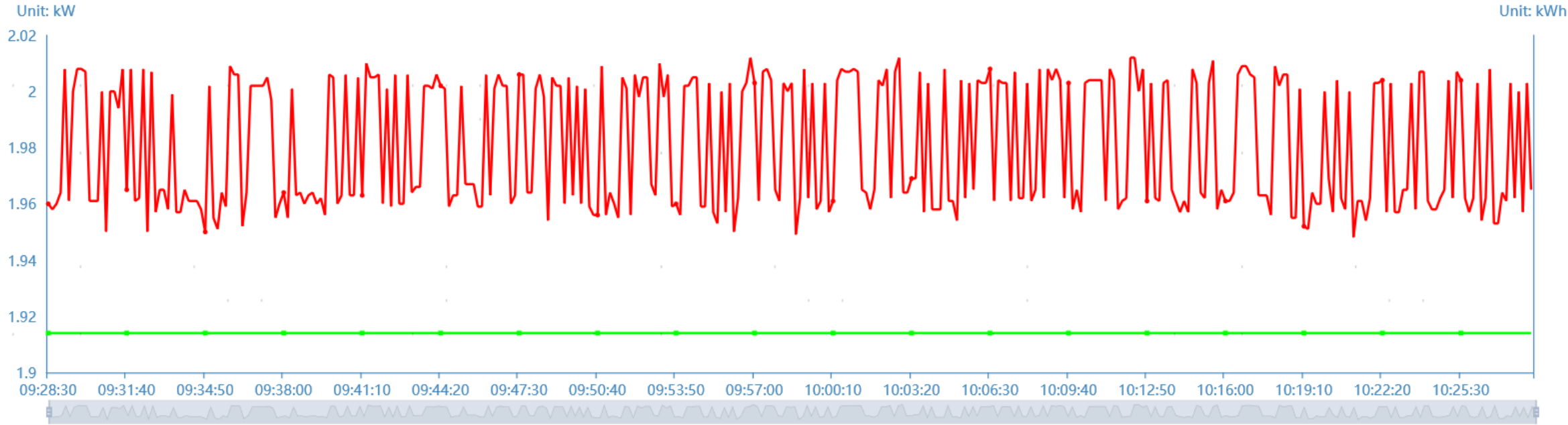
Remote Signaling Status

2020-09-16 00:00 ~ 2020-09-16 23:59

10 s

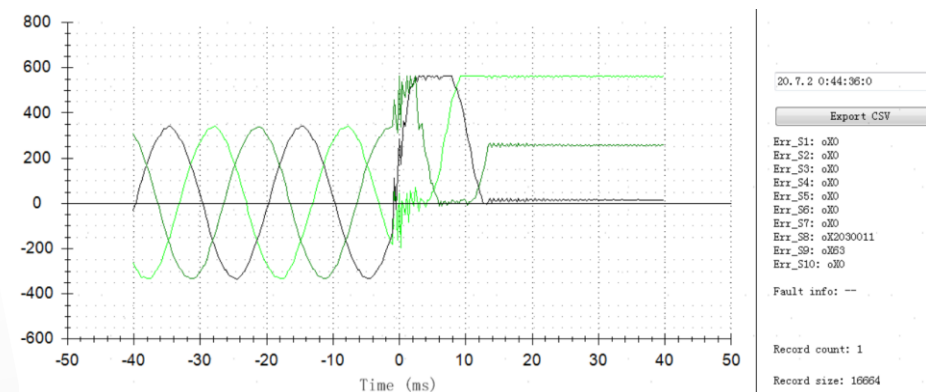
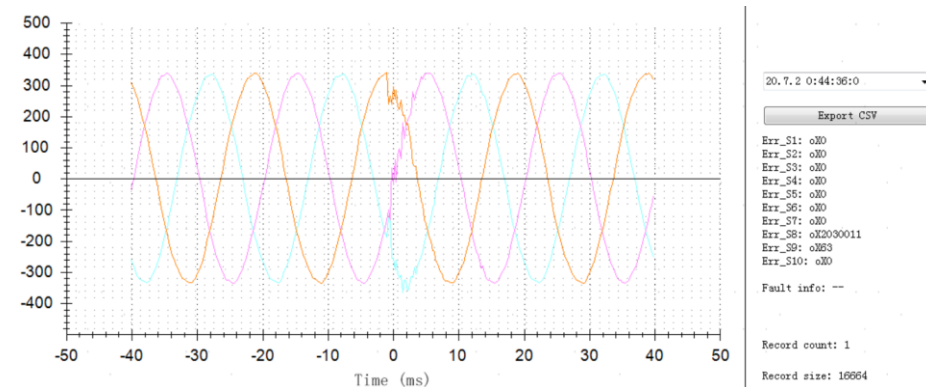
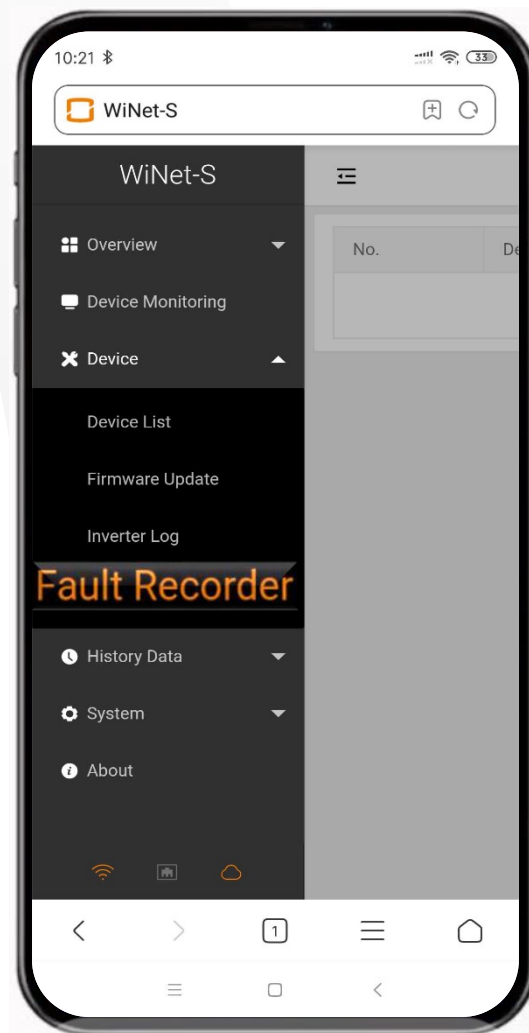


● Total DC Power ■ Total Active Power



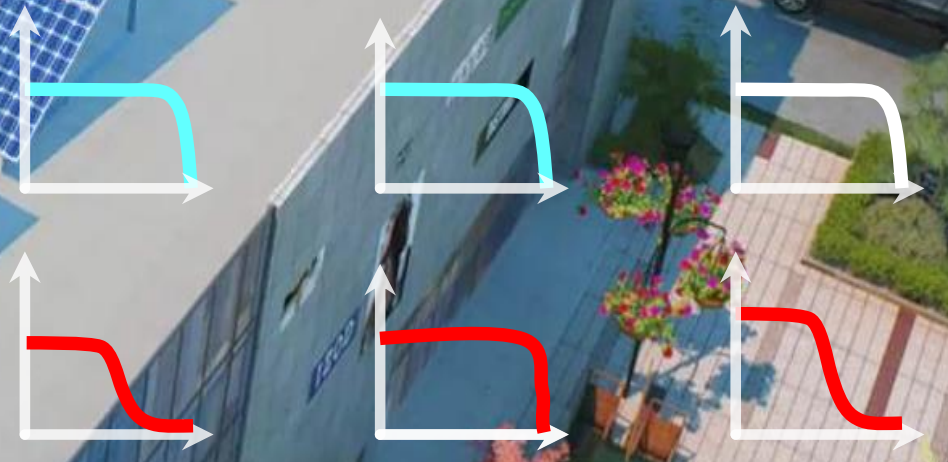
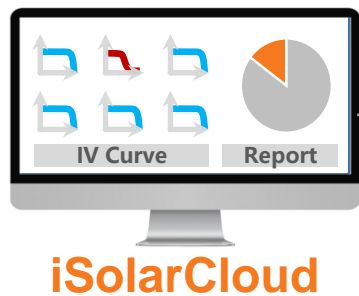
Fault Recorder

Remote, fast and accurate fault location



IV Diagnosis

- **Fast fault locating** (1 MW Rooftop Plant: **< 2 minutes**)
- Patented and self-learning algorithm





REFERENCE

Stable Operation 15+ Years



Country / City: China / Shanghai

Time: 2003

Capacity: 10kW

Project Highlight: Long time steady operation



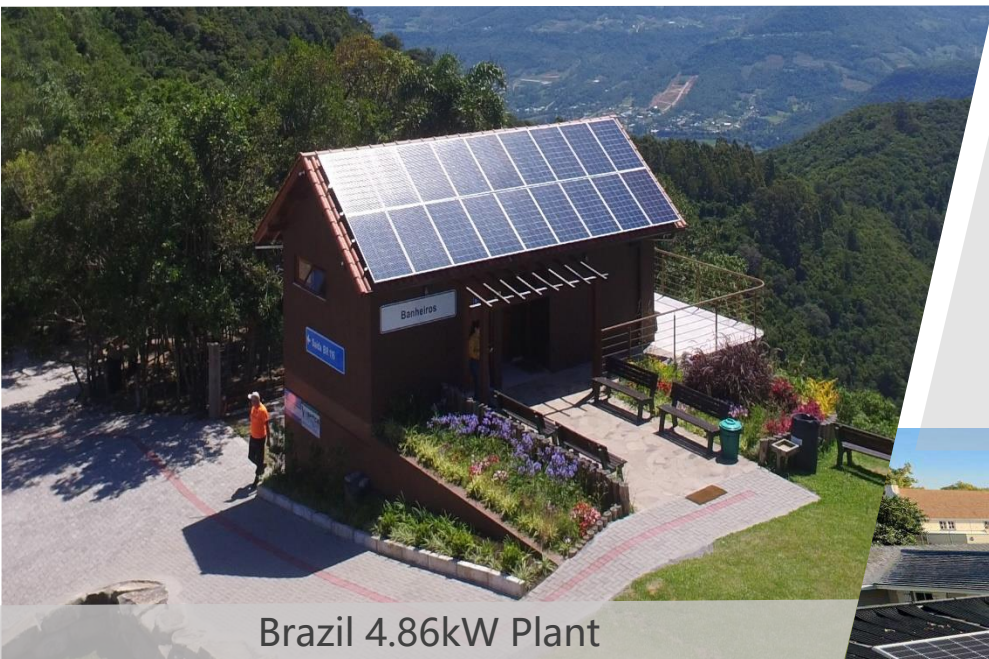
Country / City: China / Tannen Ct

Time: 2006

Capacity: 5kW / SG5K

Project Highlight: Long time steady operation

360000+ Residential References



Brazil 4.86kW Plant



Venice 120kW Plant



South Africa 5kW Plant



Italy 3kW Plant



Australia 5kW Plant



Germany 19.6kW Plant



Pakistan 10kW Plant



Clean power for all

