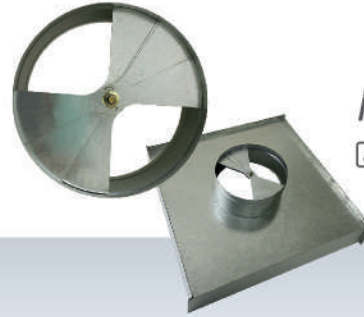




Square Blade

AL GI SS



Fan Blade Type

AL GI SS



Butterfly Blade

AL GI SS



Round Collar

AL GI SS

AL Aluminium GI Galvanised Steel SS Stainless Steel

PRODUCT DESCRIPTION

The OBD is an optional accessory (also known as rear assembly components) supplied with grilles and diffusers.

It is used for fine adjustment of air flow, for balancing the air distribution system. The design emphasis is on simplicity and durability for reliable operation.

MATERIALS

- Frame construction : 0.6mm Galvanised Steel
- Blade construction : 0.6mm Galvanised Steel

GENERAL FEATURES

Adjusted by :

- Adjusting arm
- Philips screw head adjustment (Optional)

SURFACE FINISHING

- Standard gray rustproof undercoat
- Matt black (upon request)