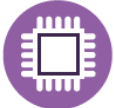




LED SOLAR FLOOD LIGHT (SW)



ASEM 2.0



Solar Panel
18%



10 Years
Lifetime



3 Years
Warranty



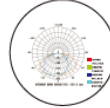
IP 66



70 °C High
Temperature
Application



16 Grade
Wind Proof



Large Light
Distribution



MPPT
Charging
Technology



Multiple installation: ground/wall mount/
pole mount, outdoor/indoor use.



Controlled optical lens,
30/60/90/120 degree beam angle



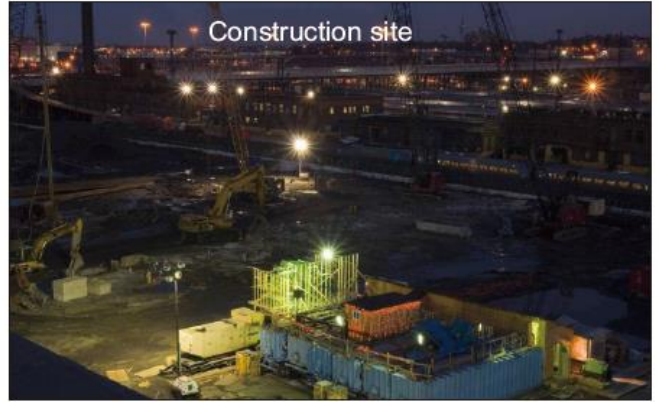
High efficiency mono
crystalline silicon solar panel



All in two design, quadded connectors,
only need these two connectors to connect,
lights work



Die cast aluminum housing,
long lifetime and good heat dissipation



Model	EGE-SFL200-SW6	EGE-SFL300-SW7
Light Power (LED)	200W	300W
Solar Panel	18V / 60W	18V / 80W
Battery	3.2V / 60AH	3.2V / 80AH
Lamp Luminous	100 LM/W	
Luminous Flux	20000 LM	30000 LM
Charge Time	≥ 6 Hours	
Discharge Time	Full Power 10 ~ 12 Hours	
	Saving Mode ≤ 36 Hours	
Intelligent Mode	Default working mode, 50% brightness whole night(five lighting modes available)	
Color Temp	3000K / 6000K.	
IP Rating	IP 65	
Beam Angle	60/90/120°	
Dimming Mode	First 4 Hours Full Brightness, Second 4 Hours 50% Brightness and last 4 Hours 25%	
Coverage Area	180-200 m ²	300-400 m ²
LED Lifespan	≥ 50000 Hours	
Certification	CE, RoHS,	
Fitting Material	Aluminum Alloy and ASA / Temper Glass & PC (Aluminum Alloy #6063)	
Lamp Size (MM)	413*315*63	440*349*63
PV Size (MM)	550*350*17	630*350*17