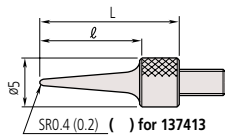


Needle Points

Suitable for probing the bottom of a groove or hole.

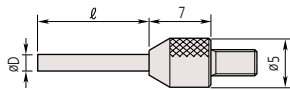


Unit: mm
Material: Hardened steel

* Contact Mitutoyo to inquire about specifications such as tip SR: 0.2 or more and l: up to 40.

Order No.	l	L
101121	11	15
137413	13	17
21AAA255	21	25
21AAA256	31	35

Needle Points (Carbide)



Unit: mm
Material: Carbide

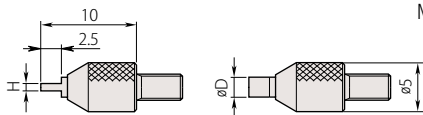
D	l	3	5	8	10	13
ø0.45	Order No.	120066	21AAA329	—	—	—
ø1	Order No.	120065	21AAA330	21AAA331	21AAA332	—
ø1.5	Order No.	—	21AAA335	—	21AAA336	120064
ø2	Order No.	—	—	137257	—	—

D	l	18	20	28	40
ø1	Order No.	—	21AAA333	—	21AAA334
ø1.5	Order No.	—	21AAA337	—	21AAA338
ø2	Order No.	21AAA257	—	21AAA258	21AAA339

* A different specification is available as a custom order.

Blade Points (Carbide)

Convenient for cylinder measurement, etc.



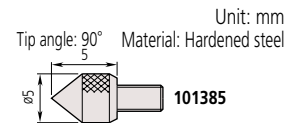
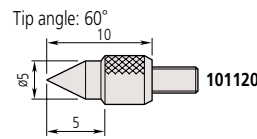
Unit: mm
Material: Carbide

D	H	0.4	0.6	1
ø2	Order No.	120061	120062	—
ø4	Order No.	—	—	120063

Note: If perpendicularity to the stem, parallelism with the reference plane, and different contact point orientation are required using a blade contact point, extra adjustment in conjunction with the linear gage is necessary. Consult with Mitutoyo as a custom-made option.

Conical Points

Used for positioning the measurement point. Since it can damage a workpiece easily, it is not suitable for use on soft materials.

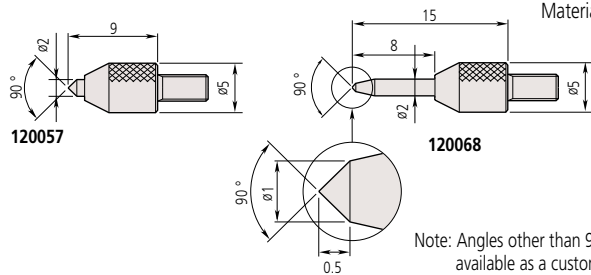


Unit: mm

Material: Hardened steel

90° Conical Points (Carbide)

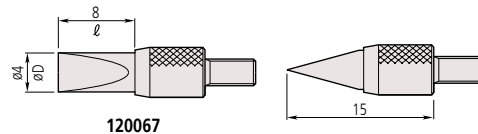
Unit: mm
Material: Carbide



Knife Edge Point (Carbide)

Suitable for measuring narrow groove diameter, etc.

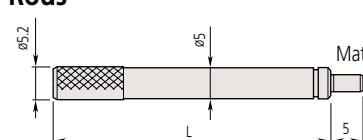
Unit: mm
Material: Carbide



* Diameter D more than ø0.5 and length/ between 5 and 40 are available as a custom order.

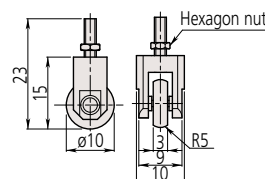
Extension Rods

Unit: mm
Material: Stainless steel



L	Order No.	L	Order No.
10	303611	55	21AAA259G
15	21AAA259A	60	304146
20	303612	65	21AAA259H
25	21AAA259B	70	21AAA259J
30	303613	75	21AAA259L
35	21AAA259C	80	21AAA259M
40	21AAA259D	90	304147
45	21AAA259E	100	303614
50	21AAA259F		

Roller Points



Unit: mm
Roller part material: Hardened steel
Roller run-out: 10 µm

Note 1: A different øD is available as a custom order.
Note 2: A high-accuracy type with a roller run-out of 5 µm is available. (Custom-made option)

901954