

DocuCentre-IV
C2265
C2263



DocuCentre-IV C2265 / C2263

Digital Colour Multifunction Device

Beautiful colour, great results.



Efficiently powerful performance

Fuji Xerox understands that you need efficient, reliable technology to get more done. And it needs to work effortlessly without wasting resources such as energy and paper.

Seamlessly create and share business-critical information, in full office colour, and take your business or workgroup to a higher level of performance — without hurting the bottom line.

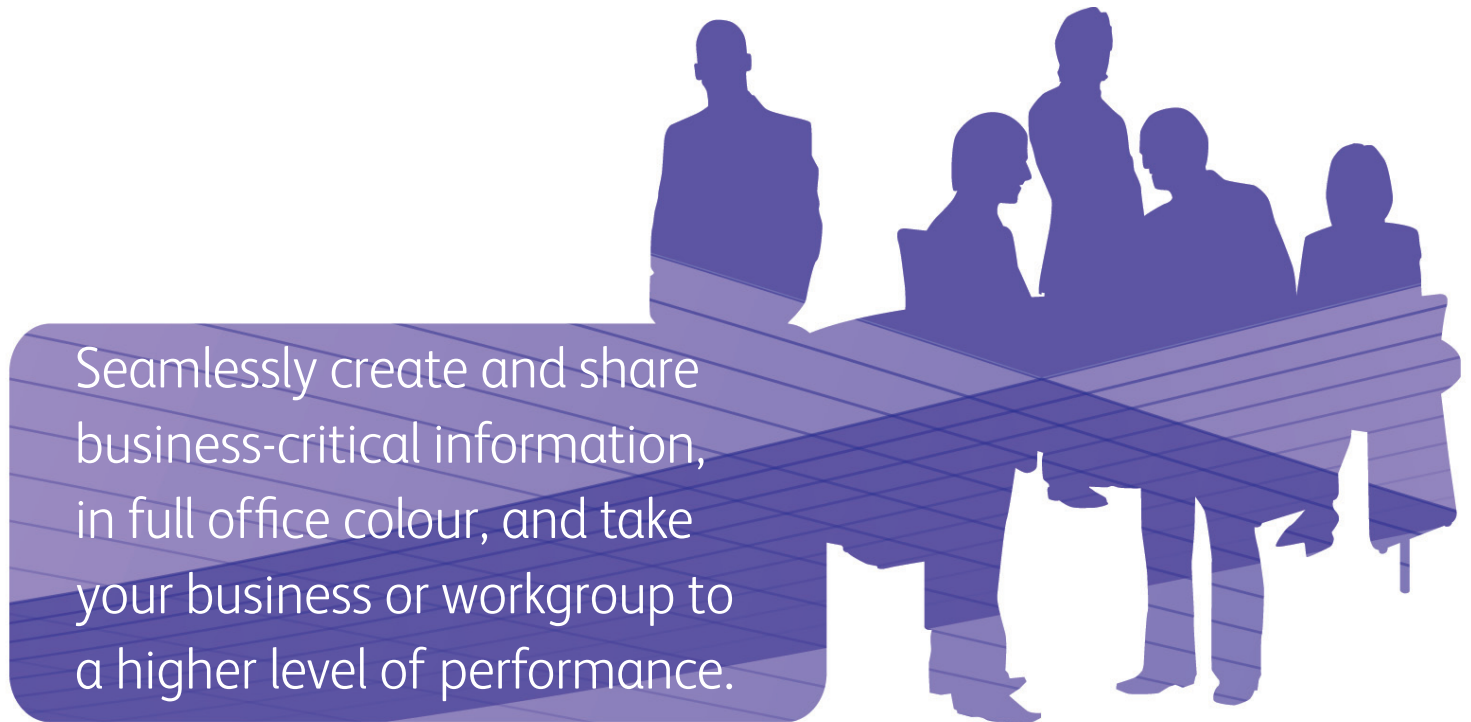
Regardless of your office size, the DocuCentre-IV C2265/C2263 multifunction device works for you. It fits perfectly into small to medium businesses with limited space, and offers all the performance you're looking for.



DocuCentre-IV C2263 with four 500-sheet paper trays and optional Finisher-B1

The multifunction device that grows with you

To meet the growing needs of your business, the DocuCentre-IV C2265/C2263 is specifically designed for scalability. As your business expands and printing requirements become more sophisticated, you can easily add functionality and productivity enhancing options.



1
Optional
Stand



2
Optional integrated
stapler finisher



3
Four 500-sheet paper trays
adjustable up to A3

4
Choose basic features like staple and hole punch (optional), or advanced capabilities to produce saddle-stitched booklets (unfolded)

Streamline your processes

Dramatically increase your workflow efficiency. Cutting edge scanning functionality opens the door to better ways of getting work done. Scan to Email quickly distributes documents to multiple email addresses. Store files on the device, or in a personal directory. You can also scan documents to network folders, FTP sites and fax servers right from the device.

Store to Folder feature allows you to scan to a folder on the printer's hard drive to reprint on demand or retrieve via a web browser. Documents stored on the hard drive are displayed as thumbnails and up-close previews on the device's touchscreen.

Easy archiving, organising and searching. With scan to searchable PDF¹, you can create a fully text-searchable file and integrate it into your workflow process in one easy step.

Significantly smaller scan files. The latest scan-export compression technologies² reduce traffic on the network and accelerate document delivery.

¹ The optional Searchable PDF kit and Extension System Memory (2GB) are required.

² The optional High Compression Image Kit and Extension System Memory (2GB) are required.

Walk-up simplicity. Print from and scan to any USB memory device for faster document delivery when you're not at your computer.



To speed up copying and faxing an express (simple) copy and fax feature displaying only the basic settings is available. This is provided in addition to the normal features.

Easy on the environment

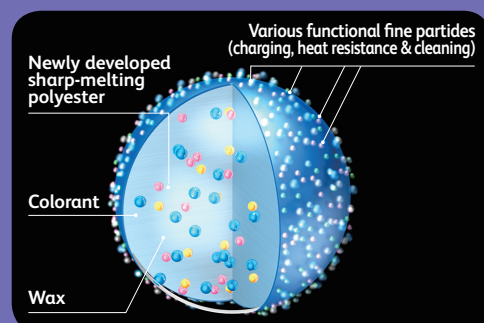
The unique "air flow design" reduces the number of cooling fans needed to maintain optimum operating temperatures. This saves energy and cuts noise levels to just 3.3 B during standby. The noise level during operation is only 6.4 B. Even when situated right next to your desk, you won't be disturbed by this incredibly quiet device.

Smart Energy Management Technology. Our innovative Smart Energy Management Technology better manages energy usage by only using what is necessary, when it's necessary. This enables the device to activate only the modules required by the user, saving energy and reducing CO₂ emissions. What's more, offices will enjoy a much quieter environment.

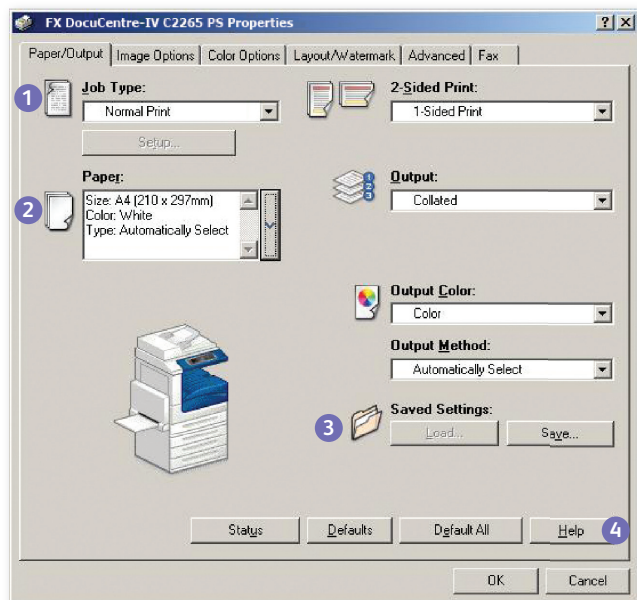
Enjoy fast recovery from sleep mode – no waiting required! The DocuCentre-IV C2265/C2263 can recover from the sleep mode in just 3 seconds. This really is Smart Energy Saving! To save even more power, the device can be set to sleep mode, yet initialise in moments whenever it is required.

Promoting the adoption of biomass plastic. Fuji Xerox is proud to promote the use of biomass plastic, comprising more than 50% of plant-derived resin (corn), used in specific device parts. This helps to reduce the levels of CO₂ emissions.

EA-Eco Toner. This Emulsion Aggregation (EA) Ultra Low-Melt toner achieves a fusing temperature more than 20°C lower than conventional EA toner, reducing power consumption during fusion, as well as achieving a brilliant glossy output even on ordinary paper.



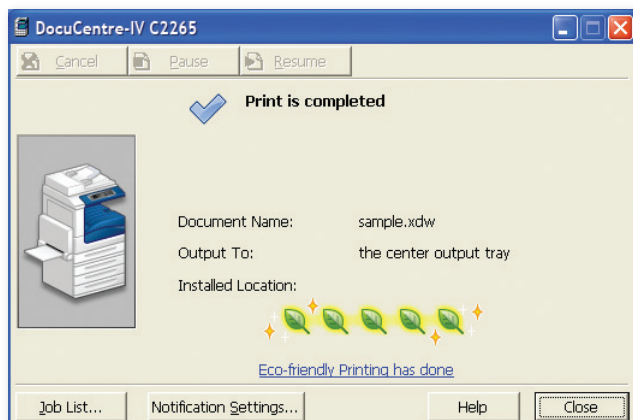
WHQL certified PCL and PostScript print drivers provide a consistent, easy-to-use interface for end users that can greatly simplify your printing operations.



- 1 Drop down menu for secure print, fax, save to mailbox and more
- 2 Paper selection summary window
- 3 Favourite print settings
- 4 Help function for feature descriptions and driver assistance

A truly universal print driver. Xerox Global Print Driver[®] lets IT administrators install, upgrade and manage Fuji Xerox and non-Fuji Xerox devices from a single driver. It provides a consistent, easy-to-use interface for end users, reducing the number of support calls, and simplifying print services management.

Users can analyse the environmental impact of their print operations by checking the ecological rating display on the document monitor³. This function displays up to five leaves to indicate how environmentally friendly the print settings are.



³ The document monitor is software that is installed on the computer. It can be downloaded from the Fuji Xerox website.

Customise your print driver settings for economy and efficiency. For example, set two-sided printing or choose N-up for printing multiple pages on a single sheet as your default.

Save time by storing the settings of frequently printed documents as favourites in your print driver. Settings include paper sizes, covers, duplexing, finishing and more.

Mac OS X now supported as standard. By installing the included non-PostScript printer driver, Mac OS X⁴ can be supported by the device, so that users can output office documents from Macintosh computers.

⁴ Some functions such as image quality adjustment are restricted. The Adobe[®] PostScript[®] 3™ Kit is required to make full use of the printing functions.

Mac OS X 10.5/10.6/10.7 is supported.

Envelope printing is now easier than ever when sending documents such as notices and invoices. Simply select the “envelope type” function and enter the required settings, such as size, correct paper tray selection, and image rotation. Envelopes can be loaded in the bypass tray, and the envelope type selected in the paper size settings.

Forwarding received fax documents. When faxes are received they can be stored in the device folders, and any required documents can be printed after checking thumbnail previews. This cuts waste and reduces paper use. Documents received in a folder can also be forwarded by fax, printed, and sent via e-mail, FTP, or SMB.

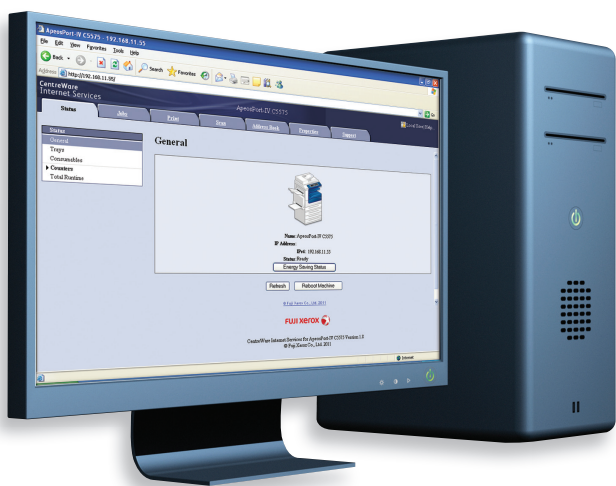
Faxes can be sent directly from PCs. This reduces the volume of paper required in an office and eliminates the need for unnecessarily printing faxes.

Eliminating spam faxes. If you do not want to receive faxes from specific or unlisted numbers they can be rejected. This handy function lets you eliminate indiscriminate direct mailing and wasteful printing of unwanted faxes.

IP faxing or FoIP offers a more cost efficient way of doing business. Faxes are sent and received through an IP-based network such as the internet. Faxes can be routed directly to an email account to conserve energy and paper.

Reporting and management tools

CentreWare™ Internet Services software makes it easy for administrators to configure the device, upload address books, monitor usage and consumables remotely and establish auditing capabilities.



Manage colour printing to minimise costs. Control costs by nominating when colour can be used, and by whom. This ensures that colour is available to those individuals who truly leverage its power, such as sales teams and the marketing department.

Driverless printing for remote users with CentreWare Internet Services web utility. Any connected computer can immediately output PDF, TIFF, JPEG and Docuworks files from any network computer, without using a print driver at all.

Device Configuration Tool allows for simplified device configuration and administration, and lets you easily clone configurations to other similar devices on the network.

Security at every level

Secure print helps prevent unauthorised viewers from seeing documents by holding jobs in the print queue until the user is authenticated.

Image overwrite security feature clears or “overwrites” all traces of any document image data remaining on the hard drive after a print, copy, scan or fax job (when enabled).

Hard disk encryption helps ensure that unauthorised users can't access stored documents.

IPv6 support includes full enablement of the new IPSec standard.

Internal security provides an additional measure of security, providing IP filtering, domain filtering and port blocking.

Device authentication restricts access to copy, print, scan and fax features by validating user names and passwords before use. Audit Log capabilities let you know who sent what, and when.

Embedded authentication enhances security and increases convenience. The DocuCentre-IV C2265/C2263 includes an authentication function so that unauthorised users are restricted from using the device. Each user's history can be collected from the job history record. By adding an embedded card reader* to the device, users can employ swipe card authentication for extra security. Use of the device can be restricted to specified users and linked with specific functions to enhance security and improve convenience for authorised users.

*An external or internal type IC Card Reader is available.



Specifications of DocuCentre-IV C2265 / C2263 Series

Fax Function (Optional)

	DC-IV C2265	DC-IV C2263
Send Document Size	Max: A3, 11 x 17", Long document (Max. 600 mm)	
Recording Paper Size	Max: A3, 11 x 17", Min: A5	
Transmission Time	2 seconds and more but fewer than 3 seconds ¹	
Transmission Mode	ITU-T G3	
Scanning Resolution	Standard: 8 x 3.85 lines/mm, 200 x 100 dpi Fine: 8 x 7.7 lines/mm, 200 x 200 dpi Super Fine (400 dpi): 400 x 400 dpi Super Fine (600 dpi): 600 x 600 dpi	
Coding Method	MH, MR, MMR, JBIG	
Transmission Speed	G3:33.6/31.2/28.8/26.4/24.0/21.6/19.2/16.8/14.4/12.0/9.6/7.2/4.8/2.4kbps	
Applicable Lines	Telephone subscriber line, PBX, Fax communication (PSTN), Max. 3 ports ² (G3-3ports)	

¹When A4 size document with approximately 700 characters is transmitted in standard image-quality (8x3.85 lines/mm) and in high-speed mode (28.8kbps or faster, JBIG). Only indicates the time for transmitting the image information and does not include the communication control time. The total communication time will vary depending on the contents of the document, the type of machine receiving the fax, and line condition.

²Maximum 3 lines can be connected. The number of ports refers to the number of channels available for transmission.

Direct Fax Function (Optional)

	DC-IV C2265	DC-IV C2263
Document Size	A3, B4, A4	
Scanning Resolution	Same as the fax function	
Transmission Speed	Same as the fax function	
Applicable Lines	Same as the fax function	
Operating System ¹	PCL6 Driver (Standard): Microsoft® Windows® 2000, Microsoft® Windows® XP, Microsoft® Windows Server® 2003, Microsoft® Windows Server® 2008, Microsoft® Windows Vista®, Microsoft® Windows® 7, Microsoft® Windows® XP x64, Microsoft® Windows Server® 2003 x64, Microsoft® Windows Server® 2008 x64, Microsoft® Windows Vista® x64, Microsoft® Windows Server® 2008 R2 English, Microsoft® Windows® 7 x64, Mac OS X-Driver (Standard): Mac OS X 10.5/10.6/10.7	

¹Please refer to the Fuji Xerox website for the latest supported operating systems.

Internet Fax Function (Optional)

	DC-IV C2265	DC-IV C2263
Document Size	A3, B4, A4	
Scanning Resolution	Same as the fax function	
Output Format	Format: TIFF-FX, Compression Method: MH, MMR, JBIG	
Profile	TIFF-S, TIFF-F, TIFF-J	
Protocol	Outgoing Mail Server: SMTP, Incoming Mail Server: SMTP, POP3	
Connectivity	Standard: Ethernet 100BASE-TX/10BASE-T	

IP Fax (SIP) Function (Optional)

	DC-IV C2265	DC-IV C2263
Document Size	Same as the fax function	
Scanning Resolution	Same as the fax function	
Protocol	SIP, JT-T.38	
Coding Method	Same as the fax function	
Connectivity	Standard: Ethernet 100BASE-TX/10BASE-T	

Duplex Automatic Document Feeder

	DC-IV C2265	DC-IV C2263
Type	Duplex Automatic Document Feeder	
Original Paper Size	Max: A3, 11 x 17", Min: A5 ¹ 38 - 128 gsm (In Duplex: 50 - 128 gsm)	
Capacity ²	110 sheets	
Feeding Speed (A4LEF Simplex)	BW: 20 ppm, Colour: 20 ppm	
Dimensions / Machine weight	W 560 x D 498 x H 125mm, 8 kg	

¹Non-standard size single-sided mode: 125 x 85 mm.

²64gsm paper.

Duplex Output Unit

	DC-IV C2265	DC-IV C2263
Applicable Paper Size	Same as the copy function	
Paper Weight	60 - 169 gsm	

Finisher-A1 (Optional)

	DC-IV C2265	DC-IV C2263
Type	Sorting (Offset available) / Stacking (Offset available)	
Paper Size / Paper Weight	Max: A3, 11 x 17", Min: Postcards (100 x 148 mm), 60 - 220 gsm	
Stacker Capacity¹		
Finisher Tray	[Without Stapling] A4: 500 Sheets, B4: 250 Sheets, A3 or larger: 200 Sheets, Mixed Size Stacking ² : 250 Sheets, [With Stapling] 30 Sets	
Staple		
Capacity	A4: 50 Sheets (Max 90 gsm), B4 or larger: 30 Sheets (Max 90 gsm)	
Paper Size	Max: A3, 11 x 17", Min: B5LEF	
Position	Single Stapling (Front / Angled)	
Dimensions / Weight	W 559 x D 448 x H 246 mm, 1.2 kg	
Space Requirement³	W 1,129 x D 640 mm	

¹64gsm paper.

²When larger size sheets are stacked on top of smaller size sheets.

³Main Unit + Finisher A1, when Extension Tray is pulled out and Bypass Tray is fully extended.

Finisher-B1 (Optional)

	DC-IV C2265	DC-IV C2263
Type		
Finisher Tray	Sorting (Offset available) / Stacking (Offset available)	
Paper Size / Paper Weight	Max: A3, 11 x 17", Min: B5 LEF, 60 - 220 gsm	
Stacker Capacity ¹	[Without Stapling] A4: 2000 Sheets, B4: 1000 Sheets, Mixed Size Stacking ² : 300 Sheets [With Stapling] A4: 100 Sets or 1,000 Sheets, B4 or larger: 75 Sets or 750 Sheets Booklet / Fold ³ : 50 Sets or 600 Sheets, Fold ⁴ : 500 Sheets	
Staple		
Capacity	50 Sheets (Max 90 gsm ¹)	
Paper Size	Max: A3, 11 x 17", Min: B5 LEF	
Position	Single stapling (Front / Angled, Rear / Straight), Dual stapling (Parallel to the edge)	
Punch⁵		
Paper Size	A3, 11 x 17", B4, A4, A4 LEF, Letter (8.5 x 11"), Letter LEF (8.5 x 11"), B5 LEF	
Number of Holes	2 / 4 hole punch, 2 / 3 hole punch (US Specifications)	
Paper Weight	60 - 200 gsm	
Booklet Finishing⁶		
Capacity	Booklet: 15 sheets, Fold: 5 sheets	
Paper Size	Max: A3, 11 x 17", Min: A4, Letter (8.5 x 11")	
Paper Weight	Saddle-Stapling: 64 - 80 gsm, Half-Folding: 64 - 105 gsm	
Dimensions / Weight	W 657 x D 552 x H 1,017 mm ⁸ , 28 kg, Booklet Finisher attached: W 657 x D 597 x H 1,087 mm ⁸ , 37 kg	
Space Requirement⁷	W 1,576 x D 640 mm Booklet Finisher attached: W 1,576 x D 651 mm	

¹Paper sizes larger than A3, 11 x 17" or smaller than B5 are delivered to the Center Tray.

²64gsm paper.

³When larger size sheets are stacked on top of smaller size sheets.

⁴The optional Finisher B1 Booklet unit is required for features of saddle stapling/bi-folding. If the output after saddle-stapling/ bi-folding is not removed from the tray, the next job may not output.

⁵Optional 2/4 Hole Punch kit or optional Finisher B1 2/3 Hole Punch kit (US Specification) is required.

⁶Inner connector within the body is excluded.

⁷Main Unit + Finisher B1, when Extension Tray is pulled out and Bypass Tray is fully extended.

Side Tray (Optional)

	DC-IV C2265	DC-IV C2263
Paper Size	Same as the Copy function	
Capacity ¹	100 Sheets	
Dimensions / Weight	W 353 x D 469 x H 198 mm, 1 Kg	
Space Requirement	Platen Model: W 919 x D 640mm ³ DADF Model: W 964 x D 640mm ³	

¹64gsm paper.

²Main Unit + Side Tray, When the Bypass Tray is fully extended.

³Main Unit + Side Tray, When the Bypass tray is fully extended. When stopper of DADF is turned on.

Specifications of DocuCentre-IV C2265 / C2263 Series

Copy Function

	DC-IV C2265	DC-IV C2263
Type	Console Type	
Memory ¹	1GB (Max. 2GB)	
HDD ²	Optional: 160GB (Usable Space: 100 GB)	
Colour Capability	Full Color	
Scanning Resolution	600 x 600 dpi	
Printing Resolution	600x600 dpi	
Halftone/Printable Colors	256 levels per color (16.7 Million Colors)	
Warm-up Time ³	CP Model: 29 sec. or if the main power is ON, 27 sec. (Room temperature 20°C) CPS Model: 32 sec. or if the main power is ON, 24 sec. or less (Room temperature 20°C)	
Original Paper Size	Max: 297 x 432 mm (A3, 11 x 17") for both sheet original and book original	
Output Paper Size ⁴	Max: A3 11x 17" (297x432mm) [For Bypass Tray, A3 11x 17" (297x432mm)] Min: A5 [For Bypass Tray, Postcard (100 x 148 mm), Envelope (120 x 235mm)] Image loss: Within 4 mm for lead edge, Within 2 mm for trail edge, Within 2 mm for rear / front side	
Output Paper Weight ⁴	Tray: 60 - 256 gsm, Bypass Tray: 60 - 216 gsm	
First Copy Output Time	BW 6.5sec. (A4 LEF/Monochrome priority mode) Colour 8.1sec (A4 LEF/Colour priority mode)	
Reduction/Enlargement	Size-to-Size: 1:1 ± 0.7 % Presets: 1:0.500, 1:0.707, 1:0.816, 1:0.866, 1:1.154, 1:1.225, 1:1.414, 1:2.000 Variable: 1:0.25 - 1:4.00 (in 1% increments)	
Continuous Copy Speed ⁵	A4LEF / BSLEF / ASLEF: 25 ppm <BW> 20 ppm <Colour> A4: 19 ppm <BW> 16 ppm <BW> 19 ppm <Colour> 16 ppm <Colour> B4: 16 ppm <BW> 13 ppm <BW> 16 ppm <Colour> 13 ppm <Colour> B5: 14 ppm <BW> 11 ppm <BW> 14 ppm <Colour> 11 ppm <Colour> A3: 14 ppm <BW> 11 ppm <BW> 14 ppm <Colour> 11 ppm <Colour>	
Paper Tray Capacity ⁶	Standard: 4T Model: 500 sheets x 4 Tray + Bypass Tray 45 sheets 2T Model: 500 sheets x 2 Tray + Bypass Tray 45 sheets Max: 4T Model: 2,045 sheets 2T Model: 1,045 sheets	
Continuous Copy ⁷	999 sheets	
Output Tray Capacity ⁸	Upper Center Tray: 250 sheets (A4 LEF) Lower Center Tray: 250 sheets (A4 LEF)	
Power Supply	AC220-240±10% , 10/15A , 50/60Hz±3%	
Power Consumption	1.76kW (AC220±10%) / 1.92kW (AC240±10%) Sleep Mode: 2.3 W(220-240v), Low Power Mode: 81 W or less, Ready Mode: 120 W or less	
Dimensions	4T/2T Model: W 885 x D 640 x H 1,132 mm (With DADF)	
Machine weight ¹⁰	4T Model: 115 kg (With DADF) 2T Model: 107 kg (With DADF)	
Space Requirement ¹¹	4T/2T Model: W 964 x D 640 mm (With DADF)	

- ¹ Additional optional memory may be required depending on functions to be used.
² To enlarge the memory, you need to install a memory of 2GB to replace the one of 1GB.
³ The hard disk capacity is not totally available for customers.
⁴ The speeds may slow down due to image quality adjustment.
⁵ Documents may not be printed correctly depending on usage conditions.
⁶ The speeds may slow down due to image quality adjustment.
⁷ 80 gsm paper.
⁸ Copy process may stop temporarily for stabilization of image quality.
⁹ OCT function is off.
¹⁰ Sleep mode is not set at the time of shipment from the factory.
¹¹ Excluding Toner.
¹¹ When the Bypass tray is fully extended, When stopper of DADF is turned on.

Print Function

	DC-IV C2265	DC-IV C2263
Type	Built-in Type	
Continuous Print Speed	Same as copy function	
Print Resolution ¹	Output Resolution: 600 x 600 dpi Data Process Resolution: Standard: 300x300dpi, High Resolution: 600x600dpi	
PDL	Standard: PCL6, PCL5, Optional: Adobe® PostScript® 3™	
Protocol Ethernet (standard)	TCP/IP (Ipd, IPP, Port9100, SMB, WSD ² , Novell® NetWare ³ , ThinPrint®) Novell® NetWare™ (IPX/SPX), NetBEUI (SMB), EtherTalk ⁴	
Operating System ⁵	Standard: (PCL 6, PCL 5 Driver) Windows® 2000, Windows® XP, Windows Server® 2003, Windows Vista®, Windows Server® 2008 x86, Windows® 7, Windows® XP Professional x64 Edition, Windows Server® 2003 x64 Editions, Windows Vista® (x64), Windows Server® 2008 x64, Windows Server® 2008 R2 (x64), Windows® 7 (x64), Mac OS X 10.5/10.6/10.7	

Notes

- 1) If a problem occurs with the recording medium (hard disk) in the device, received data, stored data, and data registered in the settings, etc. may be lost. Please note that Fuji Xerox will not be held responsible for any damages resulting due to lost data.
 2) The minimum holding period for replacement precision parts is 7 years after production is ceased for the main unit of the device.

Descriptions in this material, product specifications and / or appearances are subject to change without prior notice due to improvements. Please note that the product colour appears differently from the actual colour as a result of properties of papers or printing ink. Windows and Windows NT are registered trademarks of Microsoft Corporation. NetWare is a registered trademark of Novell, Inc. in the United States. Macintosh, Mac OS and Ether Talk are trademarks of Apple Computer, Inc. PostScript is a registered trademark of Adobe Systems Incorporated in each country. HP-GL is a registered trademark of Hewlett-Packard Company. Other company names or product names are registered trademarks or trademarks of each company.

Print Function

	DC-IV C2265	DC-IV C2263
Type	Colour Scanner	
Original Paper Size	Same as the Copy function	
Scanning Resolution	600 x 600 dpi, 400 x 400 dpi, 300 x 300 dpi, 200 x 200 dpi	
Scanning Halftone	Colour: 10 bit input , 8 bit output for each for RGB color	
Scanning Speed ¹	BW: 55 ipm, Colour: 55 ipm [Fuji Xerox Standard Document (A4 LEF), 200 dpi, Store to Folder]	
Connectivity	Standard: Ethernet 100BASE-TX / 10BASE-T	
Store to Folder	Protocol: TCP/IP (WebDAV, HTTP) File Format: Monochrome binary: TIFF, DocuWorks®, PDF ² , XPS ² , Grayscale: TIFF, JPEG ² , DocuWorks®, PDF ² , XPS ² , Full Color: TIFF, JPEG, DocuWorks®, PDF ² , XPS ² , High Compression DocuWorks ² , High Compression PDF ² , High Compression XPS ² Driver: The TWAIN interface is supported Operating System: Windows® 2000, Windows® XP, Windows Server® 2003, Windows Server® 2008 x86, Windows Vista®, Windows® 7, Windows® XP Professional x64, Windows Server® 2003 x64, Windows Server® 2008 x64, Windows Vista® x64, Windows® 7 x64, Windows Server® 2008 R2 x64	
Scan to PC	Protocol: TCP / IP (SMB, FTP) Operating System: Windows® 2000, Windows® XP, Windows Server® 2003, Windows Server® 2008 x86, Windows Vista®, Windows® 7, Windows® XP Professional x64, Windows Server® 2003 x64, Windows Vista® x64, Windows® 7 x64, Windows Server® 2008 R2 x64, Mac OS X 10.2.x/ 10.3.8/ 10.3.9/ 10.4.2/ 10.4.4/ 10.4.6/ 10.4.9/ 10.4.10/ 10.5.0/ 10.5.1/ 10.5.2/ 10.5.3/ 10.5.4/ 10.6, Novell® NetWare® 5.11/5.12 ² File Format: Monochrome binary: TIFF, DocuWorks, PDF, XPS, Grayscale/Full Color: TIFF, DocuWorks, PDF, XPS, High Compression DocuWorks®, High Compression PDF ² , High Compression XPS ²	
Scan to e-mail	Protocol: TCP/IP (SMTP) File Format: Monochrome binary: TIFF, DocuWorks, PDF, XPS, Grayscale/Full Color: TIFF, JPEG, DocuWorks, PDF, XPS, High Compression DocuWorks®, High Compression PDF ² , High Compression XPS ²	

- ¹ The scanning speeds vary depending on the document type.
² When scanned images are downloaded through CentreWare Internet Services.
³ When Network Scanner Utility 3 is used.
⁴ When optional Image Compression Kit is installed.
⁵ Please refer to the Fuji Xerox website for the latest supported operating systems
⁶ Only FTP is supported as protocol.



Reproduction Prohibitions Please note that reproduction of the following is prohibited by law: Domestic and overseas bank notes and coins, government-issued securities, national bonds and local bond certificates. Unused postage stamps and post cards. Certificate stamps stipulated by law. The reproduction of works for copyright purposes (literary works, musical works, paintings, engravings, maps, cinematographic works, photographic works, etc.) is prohibited except when they are reproduced personally, at home or within limited range according to the above. This product is equipped with an anti-counterfeit feature. This feature is not intended to prevent illegal reproduction. Be extremely careful about the management of equipment used.



For Your Safe Use

- Before using the product, read the Instruction Manual carefully for proper use.
 Use the product with an appropriate adequate power source and voltage displayed. Be sure to establish a ground.
 In the case of a failure or short circuit, an electric shock may result.

For more information or detailed product specifications, call or visit us at

Fuji Xerox Asia Pacific Pte Ltd

80 Anson Road, #37-00, Fuji Xerox Tower Singapore 079907

Tel.65-6536-6711

<http://www.fxap.com.sg>

