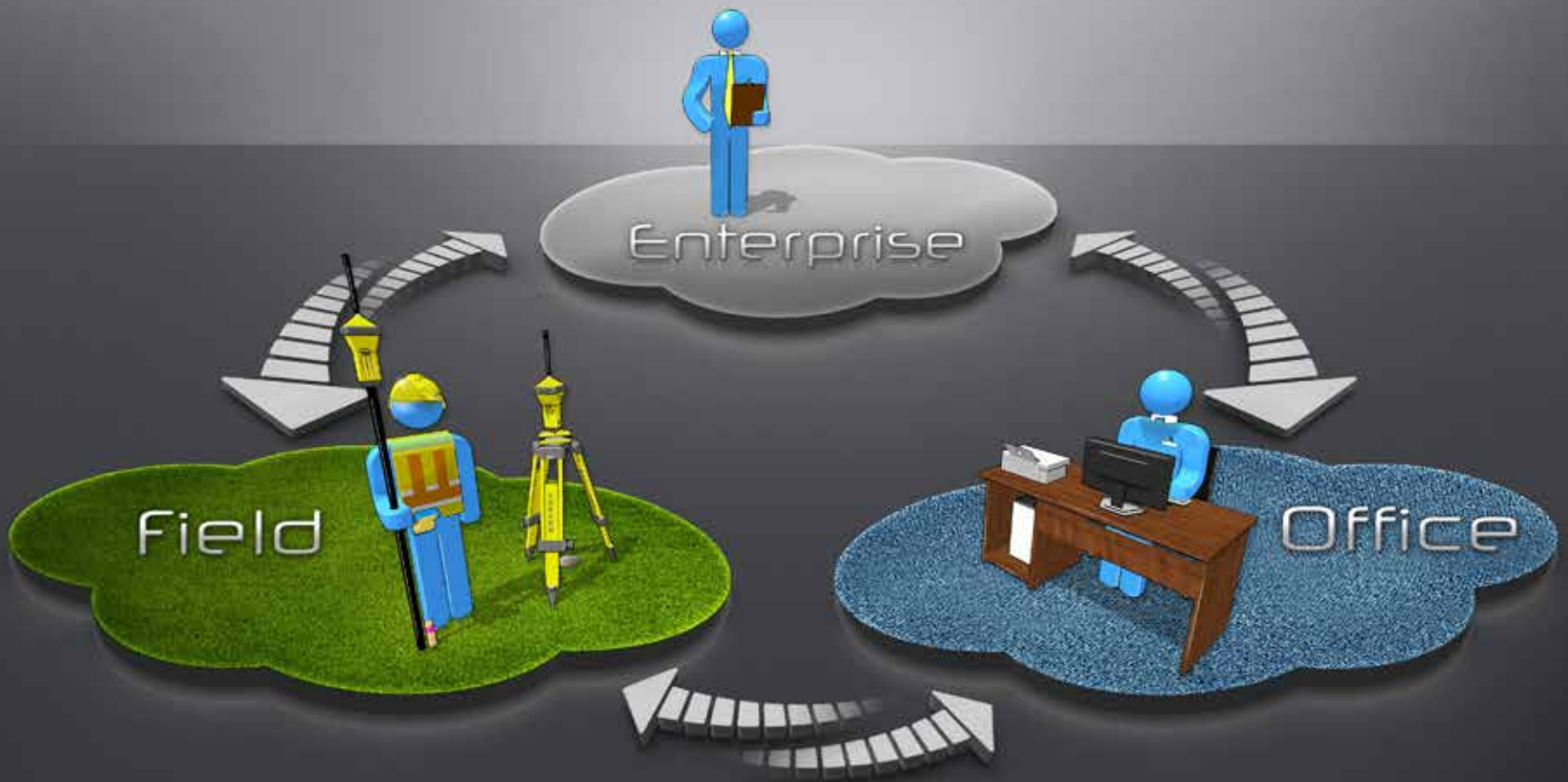


MAGNET™



Field and Office.  
**Connected.**

# MAGNET™



**INCREASED  
PRODUCTIVITY**

The software solution that streamlines data workflow for surveyors, contractors, engineers and mapping professionals.

# MAGNET™ Field



**MAGNET Field** is a powerful and intuitive field application software that enables users to collect survey mapping data and perform construction and road layout using total stations, levels, and GPS.

MAGNET Field contains all available functionality and instrument drivers. It is intended for the surveying and geomatics users who demand a wide range of functions.

MAGNET Field Site is a customized version of MAGNET Field for construction job site activities such as stakeout, grade checking to surfaces, volume estimates, and roading.

MAGNET Field Layout is a customized version of MAGNET Field that increases building layout productivity. With in-the-field plans and dimensional entry, you can go from paper plan to building layout faster than ever.

MAGNET Mobile Exchange is a free utility that connects to MAGNET Enterprise. Exchange any kind of file with the office.



“MAGNET Field  
saves me time,  
and I get  
home earlier!”



### Available Modules

DESCRIPTION	PART #	OPTICAL	ROBOTICS	GPS (INCLUDES mmGPS)	HYBRID	ROADS	FIELD PRODUCT MAINTENANCE (12 MONTH)	ENTERPRISE TEAM MODULE (12 MONTH)
<b>Field</b>	61056	•					•	
<b>Field + Roads</b>	61057	•				•	•	
<b>Field + Robotics</b>	61058	•	•				•	
<b>Field + Robotics + Roads</b>	61059	•	•			•	•	
<b>Field + Robotics + GPS</b>	61164	•	•	•			•	
<b>Field GPS</b>	61060			•			•	
<b>Field GPS + Roads</b>	61061			•		•	•	
<b>Field + GPS + Optical</b>	61062	•	•	•			•	
<b>Field + GPS + Optical + Roads</b>	61063	•	•	•		•	•	
<b>Field + GPS + Robotics + Roads</b>	61064	•	•	•		•	•	
<b>Field + Robotics + Roads + Hybrid Positioning</b>	1002833-01	•	•	•	•	•	•	
<b>Field + Robotics + Hybrid Positioning</b>	1002834-01	•	•	•	•		•	
<b>Field + Robotics + GPS + Hybrid Positioning</b>	1002835-01	•	•	•	•	•	•	
<b>Field Complete</b> (All Modules)	1002832-01	•	•	•	•	•	•	
<b>Field Solution</b> 12 months	61065	•	•	•	•	•	•	•
<b>Field Solution Renewal</b> 12 months	1002771-01	•	•	•	•	•	•	•
<b>Trade Up to Field Solution</b> 12 months (from TopSURV)	61066	•	•	•	•	•	•	•
<b>Upgrade to Field Solution</b> 12 months (from Field)	61158	•	•	•	•	•	•	•
<b>Field Product Maintenance</b> 12 months	61155					•		
<b>Field Site</b>	1001628-01	•	•	•		•	•	
<b>Field Site + Hybrid Positioning</b>	1002837-01	•	•	•	•	•	•	
<b>Field Site Solution</b>	1001629-01	•	•	•	•	•	•	•
<b>Field Site Solution Renewal</b> 12 months	1002772-01	•	•	•	•	•	•	•
<b>Upgrade to Field Site Solution</b> (from Field Site)	1003009-01	•	•	•	•	•	•	•
<b>Field Site Maintenance</b> 12 months	1001626-01					•		
<b>Field Layout</b>	1002701-01	•	•	•*	•			
<b>Field Layout + Hybrid Positioning</b>	1002836-01	•	•	•*	•			
<b>Field Layout Solution</b>	1002702-01	•	•	•*	•	•	•	
<b>Field Layout Solution Renewal</b> 12 months	1002773-01	•	•	•*	•	•	•	
<b>Trade Up to Field Layout Solution</b> (from Topcon Layout)	1002703-01	•	•	•*	•	•	•	
<b>Upgrade to Field Layout Solution</b> (from Field Layout)	1003010-01	•	•	•*	•	•	•	
<b>Field Layout Maintenance</b>	1002700-01					•		
<b>Add-on Optical Module</b>	61083	•						
<b>Add-on Robotics Module</b>	61085		•					
<b>Add-on GPS Module</b> (Includes mmGPS)	61086			•				
<b>Add-on Hybrid Positioning Module</b>	1002831-01				•			
<b>Add-on Roads Module</b>	61087					•		

\* HiPer SR RTK Only

### Field Modules Compared

FEATURE / FUNCTION	FIELD	FIELD + ROADS	FIELD + ROADS + ROBOTICS	FIELD + ROADS + GPS	FIELD + ROADS + ROBOTICS + GPS	FIELD + ROADS + ROBOTICS + GPS + HYBRID	FIELD COMPLETE	FIELD SOLUTION
<b>Conventional Total Station Drivers</b>	•	•	•	•	•	•	•	•
<b>Internal NMEA GPS Drivers</b>	•	•	•	•	•	•	•	•
<b>Topcon &amp; Sokkia Robotics Drivers</b>			•		•	•	•	•
<b>Topcon &amp; Sokkia GNSS Drivers</b>				•	•	•	•	•
<b>Exchange with MAGNET Enterprise</b>	•	•	•	•	•	•	•	•
<b>Exchange with SiteLink3D</b>	•	•	•	•	•	•	•	•
<b>IS Live Video Driver</b>			•		•	•	•	•
<b>Hybrid Switch</b>					•	•	•	•
<b>Hybrid Resection</b>					•	•	•	•
<b>Hybrid Lock</b>					•	•	•	•
<b>Roads - Roads</b>		•	•	•	•	•	•	•
<b>Roads - Horizontal Alignments</b>		•	•	•	•	•	•	•
<b>Roads - Vertical Alignments</b>		•	•	•	•	•	•	•
<b>Roads - Templates</b>		•	•	•	•	•	•	•
<b>Roads - Cross Sections</b>		•	•	•	•	•	•	•
<b>Roads - String Sets</b>		•	•	•	•	•	•	•
<b>Topo - Collect GPS Static Data</b>	•	•	•	•	•	•	•	•
<b>Auto-Topo</b>			•	•	•	•	•	•

### Field Versions Compared

FEATURE / FUNCTION	FIELD	FIELD SOLUTION	FIELD LAYOUT	FIELD LAYOUT SOLUTION	FIELD SITE	FIELD SITE SOLUTION
<b>Maintenance (first 12 months)</b>	•	•	•	•	•	•
<b>Data storage in Enterprise</b>		•		•		•
<b>Conventional Total Station Drivers</b>	•	•	•	•	•	•
<b>Internal NMEA GPS Drivers</b>	•	•	•	•	•	•
<b>Topcon &amp; Sokkia Robotics Drivers</b>	with robotic module	•	•	•	•	•
<b>Topcon &amp; Sokkia GNSS Drivers</b>	with GPS module	•	HiPer SR only	HiPer SR only	•	•
<b>mmGPS Drivers</b>	•	•	•	•	•	•
<b>Hybrid Switch</b>	with Hybrid module	•	with Hybrid module	•	with Hybrid module	•
<b>Hybrid Resection</b>	with Hybrid module	•	with Hybrid module	•	with Hybrid module	•
<b>Exchange with MAGNET Enterprise</b>	•	•	•	•	•	•
<b>Exchange with Sitelink3D</b>	•	•	•	•	•	•
<b>IS Live Video Driver</b>	with robotic module	•	•	•	•	•
<b>Cut/Fill Bar</b>	•	•	•	•	•	•
<b>Plan Entry</b>	•	•	•	•	•	•
<b>Geodetic Coordinates Ability</b>	•	•	•	•	•	•

# MAGNET™ Enterprise

The screenshot displays the MAGNET Enterprise web application interface. The interface is dark-themed and includes a top navigation bar with the MAGNET logo and user name 'Jason Hallett'. The main area is divided into several panels: a 'Map' panel on the left with a tree view of 'Dealers' and 'TopNET Networks'; a central map showing a field with pink and green overlays; a 'Chat' panel on the right with a conversation window; a 'Data Manager' panel with a list of data entries; a 'Clock' panel showing the time '08:57:29'; an 'Asset Manager' panel with statistics for 'Online devices', 'Offline devices', and 'Total devices'; and a 'To Do List' panel with a task 'Morgan: Set stakes for Lot 5 PL' due on 2011-09-15. A weather panel at the bottom left shows a temperature of 77°F and a 4-day forecast.

**MAGNET Enterprise** is a web browser-based environment that simplifies managing field and office data in the cloud. Track assets and communicate with everyone involved on your projects. Login from any browser for live updates. Save time and collaborate.

## MAGNET Enterprise Features:

- Web browser access
- Map view of field data
- Live data exchange
- Data secure backup
- Chat and communicate to-do items



“We are getting projects done faster and with fewer conflicts because MAGNET Enterprise connects my field and office guys.”

# MAGNET™ Enterprise



## Enterprise Online Store

AVAILABLE ONLINE AND THROUGH MAGNET DEALERS

PART #

**Enterprise Project Team Module** 12 months\*

61082

**Enterprise Project Team Module** 12 months Renewal

1002778-01

AVAILABLE ONLINE ONLY (MAGNET-ENTERPRISE.COM)

**Enterprise Project Team Module** 12 months (billed monthly)

**5GB MAGNET Cloud Storage** 12 months\*\*

**5GB MAGNET Cloud Storage** 12 months (billed monthly)

**MAGNET Relay** 12 months (billed monthly)

**MAGNET Relay** 12 months (month to month)

\* Enterprise Project Team Module: A license to sign into a company account and use the data storage. One simultaneous sign in per purchase. Team modules can not be combined for additional data storage. Additional storage needs to be purchased.

\*\* Additional 5GB data storage: Can be purchased and added to a company account.

**MAGNET Mobile Exchange** and MAGNET Enterprise is the perfect pairing for exchanging files between the office and the field. No matter what data collection software is used in the field MAGNET Mobile Exchange is a free utility to exchange files back to the office.

# Relay Service



**MAGNET Relay** is a GNSS correction service hosted by MAGNET Enterprise. Subscribers connect a base receiver to the MAGNET Relay service via cellular connection, making the base available for up to 10 rovers.

## MAGNET Relay Features:

- Cellular base to rovers
- Extend RTK base/rover range
- Low cost monthly subscription service
- Only requires cellular coverage
- 10 rovers from a single base

# Enterprise Mobile



**MAGNET Enterprise Mobile** is a planning and project tracking application for Android and iPad tablets. This planning and project management app gives the project manager a visual look at all on-going projects and current status against time and budget. Track man-hours, timesheets, project phases and budget, all in a graphical interface that keeps you connected to the project manager inside MAGNET Enterprise.



# MAGNET™ Office



**MAGNET Office** is a processing, design and drafting software suite that meets the demands of land surveyors and construction contractors. MAGNET Office is available in five versions: Tools, Topo, Layout, Site, and Site with Resurfacing.

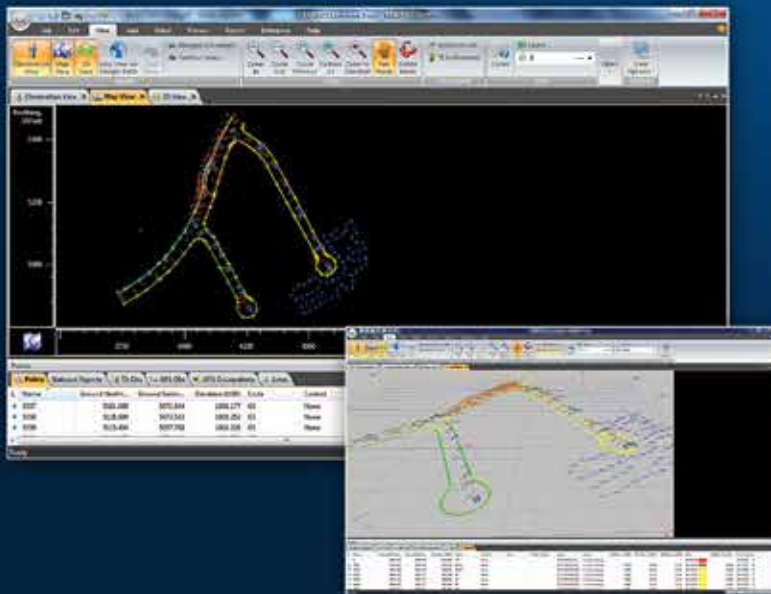
**MAGNET Office Tools** has advanced data processing and adjustment of total stations, levels, and GNSS raw data. Tools can be installed as a standalone or as an add-on to AutoCAD® products.

**MAGNET Office Topo** includes drafting and design tools for property plots, subdivisions and land development projects.

**MAGNET Office Layout** includes the editing and drawing tools required to easily make points from objects and take a building plan into the field for layout.

**MAGNET Office Site** is a full featured design and drafting tool for any machine control, land development, and road design project.

**MAGNET Office Site with Resurfacing** includes all the features of Site, but with additional advanced modules for paving and resurfacing analysis and design.



“**MAGNET Office** is great for all our CAD stations. **MAGNET Office Tools** installs directly into Civil 3D and I get real-time updates from the field guys.”



### Office Versions Compared

	DESCRIPTION	PART #	TOOLS	POST-PROCESSING	OFFICE PRODUCT MAINTENANCE (12 MONTH)	ENTERPRISE TEAM MODULE (12 MONTH)
OFFICE TOOLS	<b>Office Tools</b>	61067	•		•	
	<b>Office Tools + Post Processing</b>	61068	•	•	•	
	<b>Office Tools Solution</b> 12 months	61069	•	•	•	•
	<b>Office Tools Solution</b> 12 months, Renewal	1002774-01	•	•	•	•
	<b>Trade Up to Office Tools Solution</b> 12 months (Only from Topcon Tools)	61070	•	•	•	•
	<b>Upgrade Office Tools to Office Tools Solution</b> 12 months	61159	•	•	•	•
OFFICE TOPO	<b>Office Topo</b>	61071	•		•	
	<b>Office Topo + Post Processing</b>	61072	•	•	•	
	<b>Office Topo Solution</b> 12 months	61073	•	•	•	•
	<b>Office Topo Solution</b> 12 months, Renewal	1002775-01	•	•	•	•
	<b>Trade Up to Office Topo Solution</b> 12 months (Only from SurveyMaster and CivilCAD)	61074	•	•	•	•
	<b>Upgrade Office Topo to Office Topo Solution</b> 12 months	61160	•	•	•	•
OFFICE LAYOUT	<b>Office Layout</b>	1003003-01			•	
	<b>Office Layout Solution</b>	1003004-01			•	•
	<b>Office Layout Solution</b> 12 months, Renewal	1003005-01			•	•
	<b>Trade Up to Office Layout Solution</b> 12 months (Only from Topcon Layout Master)	1003006-01		•	•	•
OFFICE SITE	<b>Office Site</b>	61075	•		•	
	<b>Office Site + Post Processing</b>	61076	•	•	•	
	<b>Office Site + Resurfacing</b>	61077	•		•	
	<b>Office Site + Resurfacing + Post Processing</b>	61078	•	•	•	
	<b>Office Site Solution</b> 12 months	61079	•	•	•	•
	<b>Office Site Solution</b> 12 months, Renewal	1002776-01	•	•	•	•
	<b>Office Resurfacing Solution</b> 12 months	61080	•	•	•	•
	<b>Office Resurfacing Solution</b> 12 months, Renewal	1002777-01	•	•	•	•
	<b>Trade Up to Office Site Solution</b> 12 months (Only from SiteMaster and CivilCAD)	61081	•	•	•	•
	<b>Trade Up to Office Resurfacing Solution</b> 12 months (Only from SiteMaster with Resurfacing Module)	61161	•	•	•	•
	<b>Upgrade Office Site to Office Site Solution</b> 12 months	61162	•	•	•	•
	<b>Upgrade Office Resurfacing to Office Resurfacing Solution</b> 12 months	61163	•	•	•	•
	<b>Office Product Maintenance</b> 12 months	61156			•	
	ADD-ONS	<b>Add-on Topo Module</b>	61088	•		•
<b>Add-on Post Process Module</b>		61089		•	•	
<b>Add-on Site Module</b>		61091		•	•	
<b>Add-on Resurfacing Module</b>		61092		•	•	

### Office Versions Compared

SOFTWARE FEATURE	OFFICE SITE	OFFICE TOPO	OFFICE LAYOUT
<b>Office Tools Included</b>	•	•	
<b>Connection to MAGNET Enterprise</b>	•	•	•
<b>Connection to Sitelink3D</b>	•		
<b>Create and Display Digital Terrain Model (DTM)</b>	•	•	
<b>Create Structure</b>	•	•	•
<b>Place Structure</b>	•	•	•
<b>Deed Entry / Legal Description</b>	•	•	
<b>Description Code Library Mangement</b>	•	•	
<b>Basic CAD Functionality</b>	•	•	•
<b>Advanced CAD Functionality</b>	•	•	
<b>Elevate Points from Text</b>	•		
<b>Export to Pocket3D</b>	•	•	•
<b>File Support</b> *MAGNET Field Job (*.mjf, *.tsj, *.tslv), 3DMC Project File (*.tp3), 3DMC (*.rd3, *.tn3, *.pt3, *.ln3), AutoCAD (dwg, dxf), MicroStation (*.dgn), LandXML (*.xml), GENIO (*.gen, *.crd), Civilcad 5 (*.as5), Civilcad 4 (*.laz, *.asc) Standard Road (*.ali, *.ras, *.sc1), Carlson (*.rd5), Geocomp (*.str), Hayes Data (*.dat), Text Files (*.pts, *.asc, *.xyz, *.csv, *.txt, *.ctf, Topcon (*.gt7, *.gts7), Leica (*.GSI), Nikon (*.ap8, *.raw), Sokkia SDR33 (*.sdr), Trimble/Geodat 5600 (*.job, *.are), Trimble DC10 (*.dc), Wild GRE4 (*.GRE), MX (*.inp)			•
<b>Extend and Trim</b>	•	•	•
<b>Geodetic Calculator</b>	•	•	
<b>Insert - Tables, PDF, Image</b>	•	•	
<b>Insert and Extract Vectors from PDF</b>	•		
<b>Interoperability with MAGNET Office Tools</b>	•	•	
<b>Modify - Convert to Polyline</b>	•	•	
<b>Modify - Edit Strings</b>	•	•	
<b>Modify - Extend/Trim to Boundary</b>	•	•	
<b>Real Time Session from Project Site</b>	•	•	
<b>Report - Duplicate Points / Compare Jobs</b>	•	•	
<b>Seware and Drainage Design</b>	•		
<b>Surface Creation and Management</b>	•	•	
<b>Traverse Adjustment</b>	•	•	•
<b>Volume Computation</b>	•	•	
<b>View Surfaces, Contours &amp; Mesh</b>	•	•	•
<b>Plot to Scale</b>	•	•	•
<b>Cut/Fill Color Map</b>	•	•	



## How to purchase

MAGNET software and services are available for sale through MAGNET dealers and distributors, as well as online in the MAGNET Store. Visit **magnet-enterprise.com** and create a free company account to enter the MAGNET Store. Purchase software serial numbers online 24/7.



## Subscription or Full Purchase

MAGNET products can be purchased through a license subscription or full purchase. The subscription method allows a more flexible spending plan that can accommodate changes in business activity. In times of expansion, simply purchase a MAGNET subscription for one year. Once that level of activity is proven to be full time, a permanent license can be purchased. MAGNET subscriptions are referred to as a “solution.” Visit the MAGNET Store to see available options.

# MAGNET™

For more product information and free trial downloads, visit **MAGNET-Tour.com**.

Google Maps is a registered trademark of Google. Other trademarks and trade names are those of their respective owners. Specifications and functions may change. MAGNET is a registered trademark of Topcon Positioning Systems, Inc.  
© 2013 Topcon Positioning Systems P/N 7010-2089 Rev. D