

TECHNICAL SPECIFICATIONS

GNSS SPECIFICATIONS

• Channel:	404
• Signal Tracking:	GPS L1, L2, GLONASS L1, L2, BeiDou B1, B2 and SBAS
• Accuracy:	8 mm + 1 ppm Horizontal RTK accuracy Azimuth: (0.2/R)° Roll or Pitch: (0.4/R)°
• Working temperature:	-40 °C to + 80 °C

T300 GNSS Receiver

• Channel:	256
• Signal Tracking:	GPS L1, L2, L5, GLONASS L1, L2, BeiDou B1, B2, B3 and SBAS
• Accuracy:	8 mm + 1 ppm Horizontal RTK accuracy
• Size (W×H):	15.8 cm × 7.5 cm
• Weight:	0.95 kg (include 2 batteries)
• Working temperature:	-40 °C to + 80 °C

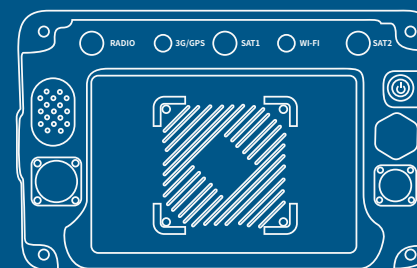
Display

• Display:	9 inch touchscreen
• I/O Ports:	USB2.0, GPIO
• Mounting:	Support VESA75
• Dimension:	270mm (H) x 170mm (W) x 64mm (H)
• Weight:	2.0 kg
• Waterproof and dust proof:	IP65
• Input voltage:	9~36VDC
• Power consumption:	<8w

Antenna

• Signal tracking:	GPS L1, L2, L5, GLONASS L1, L2, BeiDou B1, B2, B3 and SBAS
• Dimension:	Φ152 x 62.2 mm
• Connector:	TNC Female
• Weight:	374 g
• Operating Temperature:	-40 °C to + 85 °C
• Humidity:	95% No-condensing

PROFESSIONAL
POSITIONING SOLUTION
For high-accuracy piling



WORK WITH TWO ANTENNAS



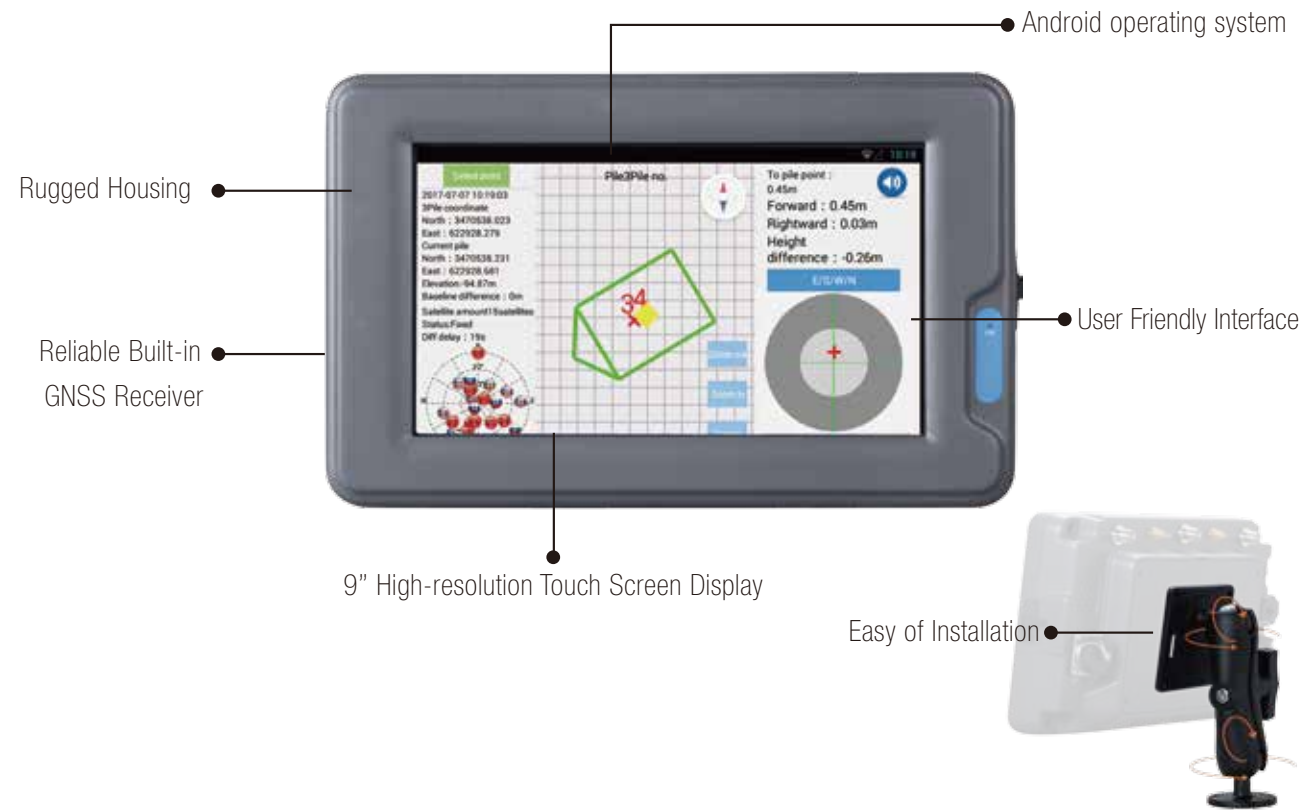
Specifications subject to change without notice.

© 2017, ComNav Technology Ltd. All rights reserved. **SinoGNSS** is the official trade mark of ComNav Technology Ltd., registered in People's Republic of China, EU, USA and Canada. All other trademarks are the property of their respective owners. (July, 2017).

ComNav Technology Ltd.
Building 2, No. 618 Chengliu Middle Road,
201801 Shanghai, China
Tel : +86 21 64056796
Fax: +86 21 54309582
Email: sales@comnavtech.com
www.comnavtech.com



Designed for static pressure pile project, SinoGNSS high-precision piling solution is an easy-to-use piling system that able to deliver centimeter-level piling positioning accuracy for multiple construction applications. It largely boosts field productivity and reduces rework compared to traditional leveling method.



SINOGNSS T300 GNSS RECEIVER

With SinoGNSS QUANTUM™ Technology and internal UHF design, the T300 GNSS receiver is one of the most reliable choices set as the base, providing stable correction data to your piling system.



- Multi-constellation tracking
- Long baseline RTK
- Rugged IP67 dust & water-proof certified
- Internal TX & RX UHF with 3-5km work distance
- Easily configuration with Android-based software



Antenna

AT330 GNSS ANTENNA

The AT330 antenna is surper performance GNSS Antenna tracking GPS L1, L2, L5, GLONASS L1, L2 and BeiDou B1, B2, B3. The rugged magnetic mount helps you easily fix antennas on piling machines.


- Strong multipath rejection capability
- Stable signal tracking performance
- Water& Dust & Lightning Proof design
- Robust antenna magnetic mount






HIGHLY INTEGRATION DESIGN

9" high-resolution tablet with integrated high-precision GNSS engine allows you easier installation and operation




2CM REAL-TIME PILING ACCURACY

SinoGNSS high-accuracy piling system ensures proven 2 cm real-time piling accuracy, while reducing labor cost for your construction




FLEXIBLE RTK CORRECTION DATA RESOURCE

Acquire correction via internal UHF by setting up SinoGNSS T300 as the base, It also allows you to connect local CORS to get correction



CAD BASE MAP SUPPORT

Directly import your CAD base map to achieve efficient points piling, and manage your project in CAD view



RELIABLE EVERYWHERE ANYTIME

Its integrated GNSS engine tracking GPS, GLONASS and BeiDou that enables the system to be work even in significant weather challenges, helping you reduce construction schedule



USER FRIENDLY INTERFACE

Pressure sensitive touchscreen with graphic icon design provides you an intuitive user interface, ensuring an efficient piling workflow even for untrained operators

FIELD SOFTWARE

PILEMASTER SOFTWARE

- Intuitive piling interface
- Graphic icon design
- Clear element management
- Up to 10000 points import
- Support Excel, TXT and CAD import

