

HPL Cementitious Panel

HPL steel panel is an epoxy coated unitized hollow shell consisting of a flat steel top sheet welded to a formed steel bottom sheet filled with a highly controlled mixture of lightweight cement. On top of the steel sheet is laminated with a anti-static HPL (High Pressure Laminated) sheet as a top finishing. It is manufactured to exacting tolerances, these non-combustible rigid, solid panels deliver the ultimate in strength and durability with the convenience of lightweight construction.



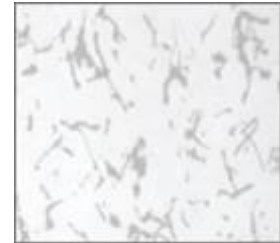
HPL panel c/w understructure



Rigid grid system



Bottom surface

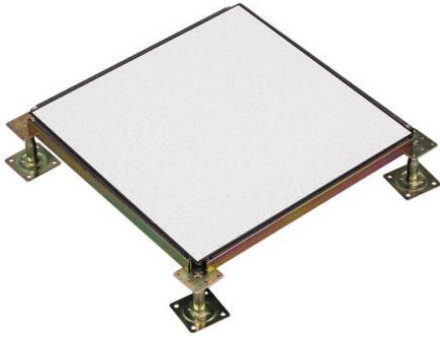


Top surface

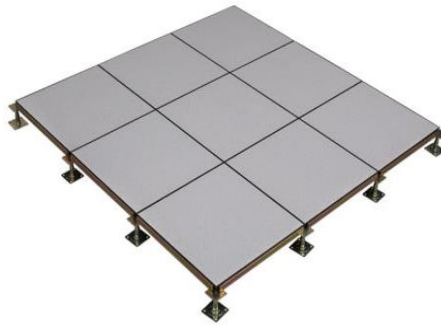
Specification

Model	: PH800, PH1000 , PH1250, PH1500	
Surface	: High pressure laminate tile	
Ingredient	: Cement	
Size	: 600mm × 600mm × 35mm	
Height	: 100mm – 1000mm	
Applications	: <div>- General Office - School or University</div> <div>- Computer Rooms - Call Centres</div> <div>- Equipment Rooms - Data Centres</div> <div>- Exhibition Areas - Control Centres</div>	

Model	Concentrated Load	Uniform Load	Rolling Load (N)		Impact Load	Ultimate Load
	lbs/in ²	KN/m ²	10 passes	10000 passes	KN	N
PH-800	800	12	3560	2670	0.5	14680
PH-1000	1000	13	4450	3560	0.5	16900
PH-1250	1250	14	5560	4450	0.6	22240
PH-1500	1500	16	6670	5560	0.6	26690



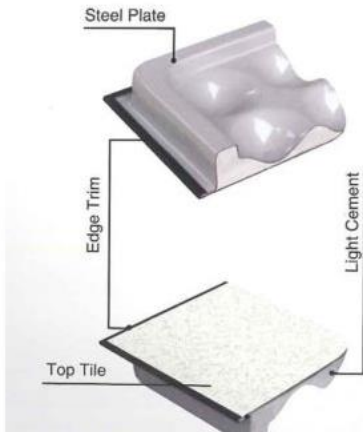
HPL Panel – Top Part



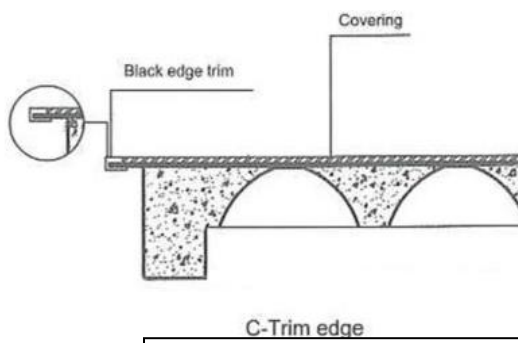
HPL Panel System



HPL Panel – Bottom



HPL Panel – Structure



HPL Panel – C Edge Trim