

Publish Date : 16.12.2019 | Rev no: 01

DINTEK Continuity Twin-Testers

The DINTEK twin tester provides instant identification of most common voice and data cabling problems including shorts, opens, reversals, and incorrect polarity. The master and remote units separate for end-to-end testing of installed cabling or work separately as independent patch cord test units. Both pieces simply snap and lock together when not in use, making it easy to carry and store. Designed to fit neatly into a toolbox or pocket, the UTP tester has a convenient 'ring' feature for attaching to a belt or frame. The UTP tester should be used to check each channel from the station device to the system.

Features

- Innovative 2-in-1 design
- Features modular jacks for testing USOC and 568A/B cabling systems
- Accurately verifies the continuity and sequence of 1-,2-,3-, & 4-pairs
- Continuously-sequencing LED display provides a diagnostic readout
- Immediately detects shorts, opens, reversals, and mis-wires
- Simple snap and lock master and remote unit design
- Ergonomically designed hand-held unit
- Light weight, rugged, and impact-resistant
- Requires 9 volt alkaline battery (not included)

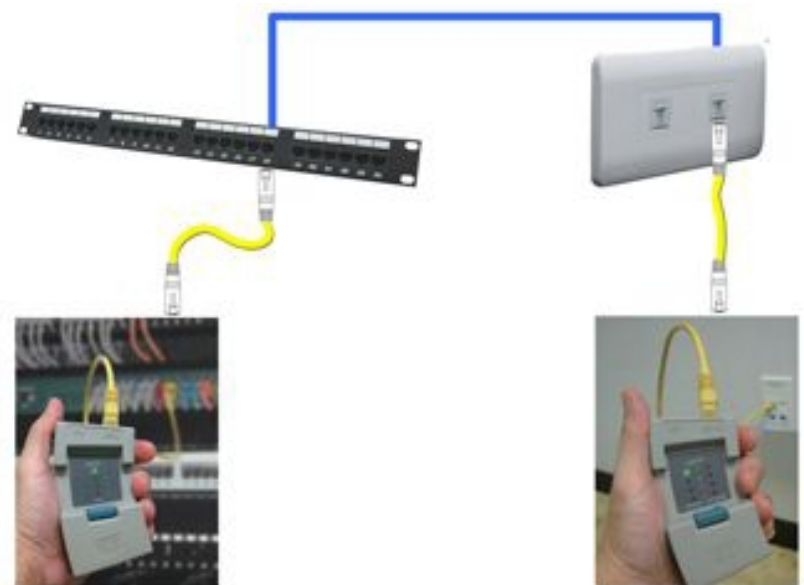
Function 1 - Patch Cord Test



Technical Specification

- Materials: ABS
- Distance: 1,000m (3,280ft)
- Power requirements: 9 volt battery(standard or alkaline)
- Weight: 240g (9 oz.)
- Built-in interface: USOC,EIA 568B
- Contact specification: 30 u" gold over nickel

Function 2 - End to End Test



Ordering Information

Product Number	Product Name	Std Pkg		
6201-03004	DINTEK Continuity Twin-Testers	1pcs / Blister Pack		