



# RG-TSB343-OKU

Ranger Swing Barrier



RANGER



Can be integrated with any kind of access control system



Infrared sensors & anti illegal entry into pedestrian access

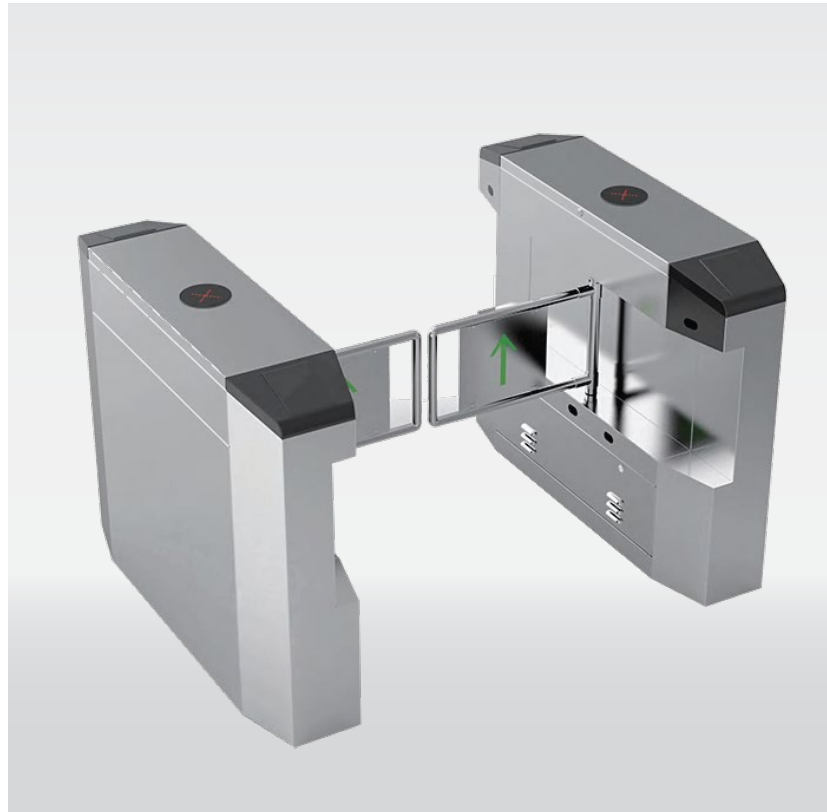


Voice and strobe light alerts



Adjustable open / close speed

\*All image and specification is subject to change without prior notice.



Technical Data	RG-TSB343-OKU
Passage Width	≤1100mm
Throughput Rate	35p/m
Power Supply	100-240 V/(ac)
Operational Voltage	24 V/(dc)
Max Power Consumption	35W
Frequency	50-60hz
Protection Level	IP44
Working Temperature	-25°C ~ +70°C
Dimension Excluding Bars	1200 x 280 x 960mm
Net Weight Including Bars	50Kg

## Ordering Info

### Model

RG-TSB343-OKU

