

8D6N

## 闪耀韩国冬季特备

江原道 | 首尔 | 济州岛

SPARKLING **KOREA**  
WINTER SPECIAL

GANGWON-DO | SEOUL | JEJU

KRKLT08\_001



## 麟蹄白桦林

位于江原道的麟蹄院袋里的山上种满一棵棵高大而笔直的白桦树，每到冬季下雪后白茫茫的雪地上，就会呈现出一整片超梦幻的银白色世界美景，让人仿佛置身在童话王国，只有亲身去体会才能感受到其中的奥秘！

## Inje Birch Forest

As many as tall and straight birch trees are planted on the hills of Linhooyuan Pass in Gangwon-do, whenever after snowing it will become the most fantasy silvery scenery, makes people drown into the fairy tale kingdom. You only can experiencing the mystery yourself!



柱状节理带 Jusanjeollil Cliff

符号表示：★ 含门票；◎ 游览站点

## 第1天 吉隆坡 → 仁川

集合于吉隆坡国际机场，飞往韩国。

## 第2天 仁川 - 金浦机场 → 济州岛

★ 宗庙 ※每周二休假

自16世纪以来，这座神殿以其目前的形式存在着，是儒家皇家神殿中最古老、最真实的，也是联合国教科文组织世界遗产。



广藏市场 Gwangjang Market

◎ 广藏市场

已有100多年历史，被誉为韩国最大的传统市场之一。

## 第3天 济州岛

★ 柱状节理带

汉拏山的熔岩涌入中文海时形成悬崖，观看高耸的悬崖以及海水冲击石柱的壮丽景色。

★ 济州啤酒酿酒厂 (含品尝1杯济州啤酒)

岛上第一种当地啤酒，在哈利姆酿造，是您游览济州时的必尝。

★ 乱打秀

## 第4天 济州岛 → 金浦机场 - 江原道

★ 羊驼世界 (喂养羊驼的体验)

前往羊驼世界，与韩国可爱的动物一起度过难忘时光。

◎ 麟蹄白桦林

690,000棵白桦树在雪中耸立，仿佛走进了童话般的仙境。

## 第5天 江原道

★ 采摘草莓体验 (每人250克)

★ 穿韩服游乌竹轩神社 ※只含韩服及头饰

◎ 安木海边咖啡馆街

享受一杯广为人知的江陵咖啡，并欣赏迷人的海滩景色。

**庆典限定：**

★ 太白山冰雪节

探索太白克山美丽的冬天，见证世界级的雪雕和壮丽的冬天风景。  
※1月8日至17日出发的团体将由太白山冰雪庆典取代穿韩服游乌竹轩神社。  
※节庆期间视天气情况而定，本公司保留修改行程的权利。

## 第6天 江原道 - 首尔

★ 滑雪乐

在这美丽的冬天里，让我们带您体验滑雪乐趣。

※自费：滑雪用具、滑雪服、滑雪镜、滑雪手套、储物柜 & 滑雪缆车 (限专业滑雪者)

※滑雪场将以地接待社最终的确认来做调整。

◎ 弘大时装街

★ 南山首尔塔【天文台、爱情锁墙】

该塔于1969年建成后成为广播塔，用于发送电视和广播信号，现已成为首尔市的地标建筑。

## 第7天 首尔

◎ 购物站：人蔘专卖店、健肝宝专卖店、美容化妆品免税店 + 护肤课。

◎ 明洞

## 第8天 首尔 - 仁川机场 → 吉隆坡

◎ 土产与纪念商品店

今天，我们乘搭当日航班，依依不舍告别韩国返回家园。

“人生就是一种旅行，我又特别爱在旅行中搭讪，听到有趣的故事，会忍不住想分享。”

- 陈丹燕

## DAY 1 Kuala Lumpur ✈ Incheon

Assemble in KL International Airport for flight to Korea.

## DAY 2 Incheon - Gimpo Airport ✈ Jeju Island

### ★ Jongmyo Shrine ※Closed every Tuesday

The oldest and most authentic of the Confucian royal shrines known as the UNESCO World Heritage site, the shrine has existed in its present form since the 16th century.

### ◎Gwangjang Market

Over 100 years old, well known as one of the largest traditional market in Korea.

## DAY 3 Jeju Island

### ★ Jusangjeolli Cliff

The cliff was formed when the lava from Hallasan Mountain poured into the sea of Jungmun, watch the towering cliff on the sea with the water beating against the stone pillars.

### ★ Jeju Beer Company (Include 1 glass of craft beer)

The island's first local beer, brewed in Hallim, Jeju City and is a must-try when you visit Jeju.

### ★ Nanta Show

## DAY 4 Jeju Island ✈ Gimpo Airport - Gangwon-do

### ★ Alpaca World (Feeding Alpaca)

A nature trip to Alpaca World, enjoy the unforgettable moment with the cute animal in Korea.

### ◎Inje Birch Forest

690,000 birch trees decked in pristine snow, it feels like stepping into the fairytale wonderland.

## DAY 5 Gangwon-do

### ★ Strawberry Picking (250g per person)

### ★ Ojukheon Shrine with hanbok touring

※Includes hanbok and ladies headpiece only.

### ◎Anmok Beach Café Street

Enjoy a cup of well know Gangneung coffee with the amazing beach view.

### Festival Arrangement :

#### ★ Taebaek Snow Festival

Explore the beautiful winter at Taebaek Mountain, witness the world-class snow sculpture and spectacular winter scenic.

※Ojukheon Shrine with Hanbok tour will be replaced by Taebaek Snow Festival for the group departure from 8th to 17th January.

※The festival is subject to weather condition and our company reserves the right to amend the itinerary due to unforeseen circumstances.



草莓采摘体验 Strawberry Picking

## DAY 6 Gangwon-do - Seoul

### ★ Ski tour

Experience ski fun in Korea's beautiful winter landscape.

※Own expenses: Ski equipment, Ski suit, Ski goggle, Ski Glove, Locker & Ski Lift (professional skier only).

※Ski venue may vary, subject to availability.

### ◎Hongdae Fashion Street

### ★ N-Seoul Tower [Observatory Deck, Love Lock Wall]

The tower was first established as a broadcasting tower to send out TV and radio signals in 1969 and it has become the landmarks of Seoul city.

## DAY 7 Seoul

### ◎Compulsory Shopping Stops

Ginseng Outlet, Healthy Liver Shop, Cosmetic Duty Free + Skin Care Lesson

### ◎Myeongdong

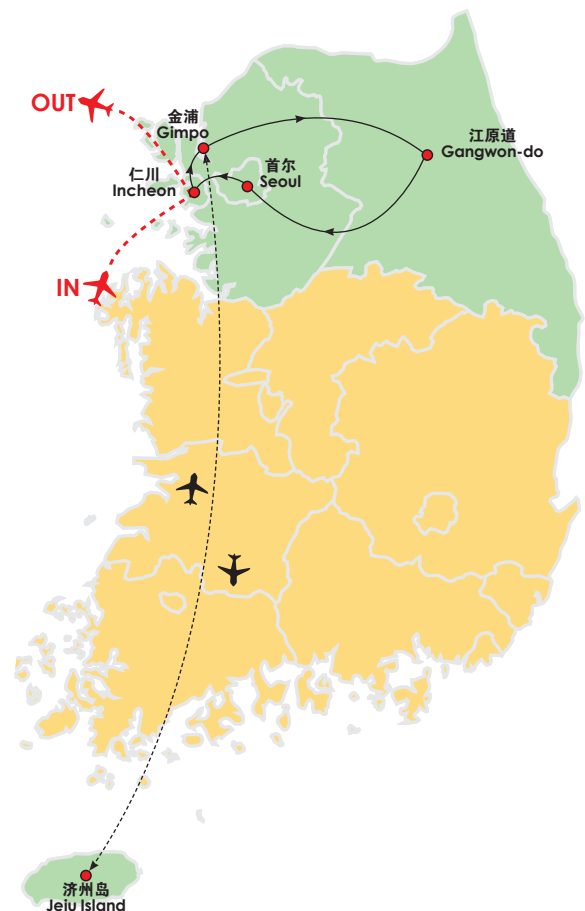
## DAY 8 Seoul - Incheon ✈ Kuala Lumpur

### ◎Local Products & Souvenir Store

Proceed to airport for your flight back home with unforgettable memories.



济州啤酒酿酒厂 Jeju Beer Company



## 行程亮点 HIGHLIGHTS

### 【体验】

草泥马喂食体验  
草莓采摘体验  
穿韩服游乌竹轩神社

### 【景点】

世界文化遗产 – 宗庙  
最浪漫冬季庆典\* – 太白山雪花节  
韩国地标建筑 – N首尔塔  
韩国天然纪念物 – 柱状节理带  
白色的魔幻森林 – 麟蹄白桦林  
钱包的地狱 – 弘大时尚购物街  
历史最悠久、规模最大传统市场 – 广藏市场

### 【享受】

入住特选酒店 + 滑雪度假村  
济州特产啤酒试喝  
欣赏韩国最热剧场表演 – 乱打秀  
要喝就喝最有名的 – 知名咖啡街享受茶或咖啡

### 【品尝】

济州必吃 – 砂锅鲍鱼汤 + 韩式煎饼  
济州特产 – 济州黑毛猪烤肉  
独家安排 – 带鱼大套餐  
平昌特色 – 黄太鱼套餐  
不计成本 – 蒸红蟹任吃 + 螃蟹炒饭  
米其林指南 – 人蔘鸡汤

### 【EXPERIENCE】

Feeding Alpaca  
Strawberry Picking  
Ojukheon Shrine with hanbok touring

### 【ATTRACTIONS】

UNESCO World Heritage - Shrine  
Most romantic winter celebration\* - Taebaek Snow Festival  
Korean landmark - N Seoul Tower  
Korean natural monument - Jusangjeolli Cliff  
White magic forest - Inje Birch Forest  
The infernal of wallet - Hongdae Fashion Street  
The oldest and largest traditional market - Gwangjang Market

### 【ENJOY】

Stay at selected hotels + ski resort  
Jeju specialty beer tasting  
Korea's famous theater performance - Nanta Show  
Drink the most famous tea or coffee at the famous coffee street

### 【GOURMET】

Must Eat in Jeju - Abalone Claypot Soup + Korean Pancake  
Jeju specialty - Jeju Black Pork BBQ  
Exclusive Arrangement - Giant Galchi Set  
Pyeongchang Specialty - Dried Pollack Fish  
Regardless of cost - Steamed Red Crab + Crab Fried Rice  
Michelin Guide - Ginseng Chicken Soup

## 餐饮安排 MEAL PLAN | 住宿 ACCOMMODATION

天数 DAYS	早餐 BREAKFAST	午餐 LUNCH	晚餐 DINNER	特选酒店 SELECTED HOTELS
1	-	-	-	On Board
2	机上用餐 On Board	韩式卷五花肉 Bossam Jungsik	砂锅鲍鱼汤 + 煎饼 Abalone Claypot Soup with Pancake	新罗舒泰酒店 或 同级 Shilla Stay Hotel or similar
3	酒店 Hotel	带鱼大套餐 Giant Galchi Set	济州黑毛猪烤肉 Jeju Black Pork BBQ	
4	酒店 Hotel	春川炒鸡 Pan Fried Spicy Chicken	鱼干定食 Dried Pollack Fish	麟蹄 Speedium 酒店&度假村 或 同级 Inje Speedium Hotel & Resort or similar
5	酒店 Hotel	蒸红螃蟹+螃蟹炒饭 Steamed Red Crab + Crab Fried Rice	韩式烤肉 Korean BBQ	平昌阿尔帕西亚亚洲际度假酒店 或 同级 Intercontinental Alpensia Pyeongchang Resort or similar
6	酒店 Hotel	自费 Own Expenses	人蔘鸡汤 Ginseng Chicken Soup	首尔龙山诺富特大使酒店 或 同级 Novotel Ambassador Seoul Yongsan Hotel or similar
7	酒店 Hotel	海鲜套餐 Seafood Set	晚餐自费 Own Expenses	
8	乌东面 – 马航 / 酒店用餐 – 韩航 (如乘搭韩航午餐自费) Udon Noodle for MH / Hotel Breakfast for KE ( Lunch at your own expense for KE group )			

### Travel Essentials:

Passport & Visas - Each tour member is responsible to ensure their passport is valid for at least six (6) months from the return date of the trip and all necessary visas and permits have been acquired.  
Travel Insurance - It's essential that you take out a comprehensive travel insurance before travel.

### Terms & Conditions:

- Itineraries, meals, hotels and transportation are subject to change without prior notice.
- AVSB reserves the right to make changes to or cancel the itinerary at any time due to unforeseen circumstances, especially during peak periods or in the event of a force majeure.
- AVSB is not responsible for omissions, printing and/or presentation errors in brochures or in any media where such information may be presented; AVSB reserves the right to make corrections as required.
- Every person participating in AVSB's tours shall travel at his/her own risk. AVSB shall not be held liable to any person for additional expenses that may be incurred due to delays or changes in any transport services, sickness, weather, strikes, war or other causes.
- For other terms & conditions, refer overleaf of invoice or visit <https://www.applevacations.my/web/terms.php>
- All pictures shown are for illustration purpose only.  
Note: AVSB refers to Apple Vacations Sdn Bhd

### Korea Tours - Additional Terms & Conditions:

- Tours are conducted in Mandarin.
- Triple Room - Third person shall be based on rollaway bed.
- Tour fare quoted is for MALAYSIAN, non-Malaysian surcharge applied.
- Compulsory Shopping Stops - All tour members are required to visit the compulsory shopping stops (approximately 1 hour) but are not obligated to purchase anything. AVSB reserves the right to collect a penalty of RM350 per person should any tour member fail to visit the specified shopping stops.

### 旅行必备:

护照或签证 – 团员有责任确保护照有效期需至少6个月(从返程日期算起), 并且取得必要的签证和准证。  
旅游保险 – 出发前, 建议您购买全面的旅游保险。

### 条款:

- 行程、膳食、酒店住宿和交通可能会有所变动, 恕不另行通知。
- 若出现无法预测的特殊情况, 特别是在旅游旺季期间, 蘋果旅遊将保留更改或取消行程的权利。
- 若蘋果旅遊的宣传手册或任何传播媒介, 出现任何形式的印刷失误或遗漏, 本公司一概不负责, 并且保留更正的权利。
- 每位参与蘋果旅遊的团员, 必须为自身安全或行为负责。若出现无法预测的特殊情况 (例如: 交通延误/取消、天气、疾病、示威、战争等等), 因而引发额外支出的问题, 蘋果旅遊一概不负责, 旅客需自行负责额外的费用。
- 详情条款, 请参阅单据网页或浏览 <https://www.applevacations.my/web/terms.php>
- 以上图片仅供参考, 请以实物为准。

### 韩国团 – 附加条款:

- 所有行程以中文讲解为主。
- 三人房 – 房内第三名住客的床褥, 将以折叠式为准。
- 团费仅适用于大马公民, 外国公民则需缴付额外费用。
- 指定购物站 – 所有团员必须停留在指定的购物站约1小时, 但不强制购买任何商品。若任何团员没有停留在有关地点, 蘋果旅遊有权利征收350令/人的款项。

For Agent Use Only:

Printed Date: NOVEMBER 2020