



# INFINO GLOBAL SDN BHD

COATING SOLUTIONS SPECIALIST

.....

since year 2004

**Infino Global Sdn Bhd** is a company that provides coating and painting services. Our main office is located in Seri Kembangan, Selangor, Malaysia. We specialize in floor and epoxy & PU coatings, 2K auto paints, heavy-duty protective coating, building emulsion paint, anti-stick, glass, stainless steel, plastic, and furniture. Infino Global Sdn Bhd also accepts painting building and vehicle & plastic chroming contracts.

**Top brand  
in Malaysia** 

## SPRAY PAINTING PROFILE

**CONTACT:**

012-309 1999 (Mr.Wong)

018-211 6999 (Office)

**PAINT  
SPECIALIST**  
KC WONG



**We're Coating Solutions Specialist**

# TABLE OF CONTENTS

<b>Company Facilities</b>	<b>Pages</b>
Quality Control Equipments	a
Spray Equipments	b
Lift Equipments	c
Airless Spray Equipments	d
UV Light Accelerated Wheathering Tester	e
Company Facilities	f - g
Lorry List	h
Training	i-j
<b>Building Facade</b>	
Sime Darby Brunfield at Bukit Kiara	1 - 2
LaLaport at Bukit Bintang City Center	3
Menara MAIWP HQ Kuala Lumpur	4
USIM Nilai	5
Pearl Point	6
Bukit Pelali Johor	6
<b>Floor Coating</b>	
3D Images Floor System	7
Epoxy System	8
SLE System	9
Floor Coating With Many Different System	10 - 11
PU MF UV Flooring System	

# TABLE OF CONTENTS

## **Anti Stick Coating**

Light Pole **12 - 13**

Feeder Pillar **13 - 16**

## **Painting Service**

IOI City Farm Project **17 - 18**

Wall Painting **19**

Metal Deck Ceiling **20-23**

## **Coating Service**

Oil Tank Coating **24**

Waterproofing Coating **25**

Roof Head Reflection **26**

Roofing & Waterproofing **27**

Roof Coating **27**

Roof Ceiling Paint **28**

UV Outdoor Floor Coating **29**

Marble Granite Coating

**Spray Service** **30**

Powdercoated Aluminium **31-32**

Stainless Steel (MITEC) **33**

Landmark **34**

Prince Court Roofing & Waterproofing **35**

Aluminium Substract **36**

Electronic Aluminium Casing **37**

Glass **38**

Commercial Vehicle

# TABLE OF CONTENTS

UMW Toyota Forklift Refinish	39
Electronic Casing	40
Machine Generator	41
Coffee Machine LA MARSA	42
Coffee Machine	43-44
Satellite Phone Casing	45
PVC Celuka	46 - 47
Chroming Hyper Silver	48
Leather	49
Fiberglass	50
Furniture Wood	51
Stainless Steel	52
Casing	53
Galvanized Steel	54
Electronic Casing	55
Spray repaint Out door garden Sit	56
<b>Distribution &amp; Retail</b>	<b>57 - 60</b>
<b>Schedule Waste Management</b>	<b>61 - 62</b>

## WORKING & PRODUCTS EXPERIENCED

- 1) SHOPEE CONTINUE 2 YEARS AWARD TOP SELL CAR PAINT.**
- 2) ALL PAINTS MATERIALS IS MANUFACTURED BY LOCAL FAMILY COMPANY.**
- 3) MAIN PRODUCE 2K AUTO & PROTECTIVE PAINT , EXPORT TO HONG KONG, AUSTRALIA, PHILIPINE & VIETNAM.**
- 4) UMOBILE APPOINTED PAINTER, OVER 200UNITS UMOBILE 4 WHEEL TRUCK PROVIDE 5 WARRANTY SINCE YEAR 2019.**
- 5) NINJAVAN APPOINTED PAINTER, OVER 300 UNITS NINJAVAN PROVIDED 5 YEARS WARRANTY SINCE YEAR 2021.**
- 6) MALAYSIA 1ST ANTI STICKER COATING DEVELOPER, OVER 10,000 UNITS TNB, MBSA, MBPJ, MPKJ, DBKL, MPKLANG, MPSEPANG, MPKS, MP PORT DICKSON, SILK, GAMUDA & IOI PROPERTY FEEDER PILLAR & LIGHT POLE USED OUR ANTI STICKER PAINT PROVIDE 4YEARS WARRANTY SINCE YEARS 2008.**
- 7) MALAYSIA 1ST TARPAULIN ADVERTISEMENT BANNER USA MMT PRINTER PAINT DEVELOPER, PROVIDE 5 YEARS WARRANTY SINCE YESRS 2021.**
- 8) MALAYSIA 1ST CELUKA PLASTIC FACADE BUILDING PAINT DEVELOPER, PROVIDE 5YEARS WARRANTY SINCE YEARS 2015.**
- 9) MALAYSIA 2ND GLASS COATING PAINT DEVELOPER PROVIDE 5 YEARS WARRANTY SINCE YEAR 2012.**
- 10) MALAYSIA 1ST STAINLESS STEEL COATING DEVELOPER, PROVIDE 3 YEARS WARRANTY SINCE YEARS 2010**

## WORKING & PRODUCTS EXPERIENCED

**11) BIO OIL TANK PROTECTIVE COATING PROVIDE 1YEAR WARRANTY SINCE YEAR 2019.**

**12) ROOF HEAD REFLECTION & WATER PROOFING COATING PROVIDE 2 YEARS WARRANTY SINCE YEAR 2019.**

**13) WATER PROOFING COATING PROVIDE 2 YEARS WARRANTY SINCE YEAR 2019.**

**14) IOI CITY FARM PAINTING WALL, WOOD, PLASTIC, METAL SINCE 2022.**

**15) SIME DARBY MAINCOND BRUNFIELD APPOINTED PAINTER, PROVIDE PAINTING & SUPPLY SERVICE TO SIME DARBY PROJECT CONDOMINIUM, SHOP LOT, FACADE, LAND SCAPE.**

**16) PROVIDE PAINTING SERVICE TO BBCC LALAPORT & MAIWP.**

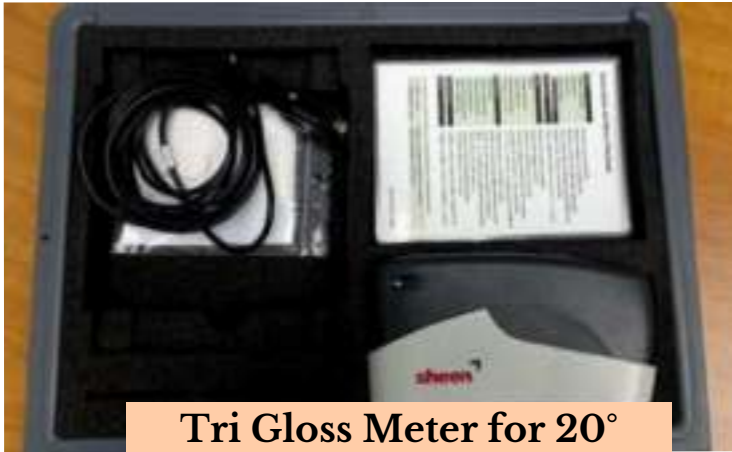
**17) FLOOR COATING SERVICE PROVIDE 5 YEARS WARRANTY SINCE 2015.**

**18) SAPURA THALES ELECTRONICS APPOINTED SATELIT PHONE CASING PAINTER.**

**19) MALAYSIA 1ST MARBLE GRANITE PROTECTIVE COATING DEVELOPER, PROVIDE 3 YEARS WARRANTY.**



# Quality Control Equipments



Tri Gloss Meter for 20°  
60° 85° Degree Gloss Level



Dry Film Thickness  
Tester



Cut Cross Tester for  
Adhesion Test



Hardness Tester for  
Hardness Level Test

# Spray Equipments



**Spray Booth- Water  
Curtain Filtering System**



**Dust Free Spray Booth- Water  
Curtain Filtering System**



**Anest Ivata  
Spray Gun**



**Air Dry  
Cooling System**



**Air Filter**



# Lift Equipments



**Scaffolding**



**Boomlift**



**Scissorlift**



**Skylift**

# Airless Spray Equipments



6000 watt



1500 watt



4500 watt



2200 watt



Genset



Genset



PUMA Air Compressor

# UV Light Accelerated Weathering Tester



## Example



Cyan



Magenta



Yellow



# Company Facilities



## PERAKUAN PENDAFTARAN

Adalah dengan ini diperakui bahawa kontraktor yang dinyatakan di bawah ini telah berdaftar dengan Lembaga mengikut Bahagian VI Akta Lembaga Pembangunan Industri Pembinaan Malaysia 1994. Pendaftaran ini adalah tertakluk kepada syarat-syarat yang telah ditetapkan bersama perakuan ini.

No. Pendaftaran : 0120190920-WP032088  
Nama Kontraktor : INFINO GLOBAL SDN, BHD,  
Alamat Berdaftar : NO. 30-A, JALAN 17/155C BANDAR BUKIT JALIL  
57000 BINTULU  
WILAYAH PERSEKUTUAN KUALA LUMPUR  
Daerah : KUALA LUMPUR  
Tarikh Mula Berdaftar : 21/09/2019

<u>GRED</u>	<u>KATEGORI</u>	<u>PENGGHUSUSAN</u>
G3	B	B04
G3	CE	CE21

[www.carlour.com.my](http://www.carlour.com.my)

Tarikh Mula Berkuatkuasa : 21/09/2019

Tarikh Habis Tempoh Perakuan : 20/09/2021

**STATUS: BARU**

A handwritten signature in black ink, appearing to be the signature of the Executive Chairman of CIDB Malaysia.

Ketua Eksekutif

Lembaga Pembangunan Industri Pembinaan Malaysia

Tarikh: 21/09/2019



# Company Facilities



Our Ref : PMC/SA/1241/2023

April 5, 2023

TO WHOM IT MAY CONCERN

**SUPPLY OF NIPPON PAINT PRODUCTS TO:  
INFINO GLOBAL SDN BHD (1242305-K)**

---

Dear Sir / Madam,

This serves to confirm that **INFINO GLOBAL SDN BHD (1242305-K)** has been a regular customer with Paint Marketing Co (M) Sdn Bhd for many years. We shall continue to support and supply to **INFINO GLOBAL SDN BHD (1242305-K)** now and in future on their new projects which they may undertake.

Thank you.

Yours faithfully,  
**PAINT MARKETING CO. (M) SDN BHD**

A handwritten signature in black ink, appearing to read 'Matt Wong'.

**MATT WONG**  
Nasional Sales Manager

MW/OZH/jie

**PAINT MARKETING CO. (M) SDN BHD** (30196-V)

Lot 1-17, Taman Perindustrian Subang Utama, Jalan SU 4, 40300 Shah Alam,  
P.O. Box 7027, 40700 Shah Alam, Selangor Darul Ehsan, Malaysia. Tel: +60 3 51016286 Fax: +60 3 51918668

A MEMBER OF THE NIPSEA GROUP

# Company Facilities



Production



Laboratory



Recycle Distillation Machine



# Lorry List



# Training

## GREENSEAL





# Training

## PENTENS



# Composite Panel Coating

## Ferrari Glenmarie





# Composite Panel Coating

## Ferrari Glenmarie



# Metal deck Coating Ferrari Glenmarie





Metal Deck Roofing Polyurea  
Waterproofing Coating  
Prince Court Medical Centre



**After**



**After**



**Before**



**Before**



Metal Deck Roofing Polyurea  
Waterproofing Coating  
Prince Court Medical Centre



# Metal Deck Roof Ceiling Coating

Gardenia Shah Alam





# Metal Deck Roof Ceiling Coating

Gardenia Shah Alam



# Metal Deck Roof Ceiling Coating

Gardenia Shah Alam

**Before**



**Before**



# Metal Deck Roof Ceiling Coating

## Gardenia Shah Alam





# Building Facade

## Sime Darby Brunfield at Bukit Kiara



# Building Facade

## Sime Darby Brunfield at Bukit Kiara





# Building Facade

## BBC Lalaport Mall Project



# Building Facade

## Menara MAIWP HQ Kuala Lumpur





# Building Facade

## USIM Nilai



## Building Facade Pearl Point



## Building Facade Bukit Pelali Johor





# Floor Coating 3D Images System



**2D Image + Self Leveling  
Epoxy Topcoat**



**3D Image + Self Leveling  
Epoxy + PU UV Topcoat**



**3D Image + Self Leveling  
Epoxy Topcoat**

# Floor Coating Epoxy System



**Epoxy Primer & Epoxy  
Gloss Topcoat System**



**Epoxy Natural Gloss  
Transparent Clear System**



**Epoxy Transparent Clear  
Semi-Gloss System**



**Mortar Epoxy Water Proofing  
System for Food Industry Factory**

# Floor Coating SLE System



**Epoxy Metallic  
Self Leveling System**



**Epoxy Pearl  
Self Leveling System**





# Floor Coating

## Floor Coating with Many Different System



**Epoxy Colour  
Gloss System**



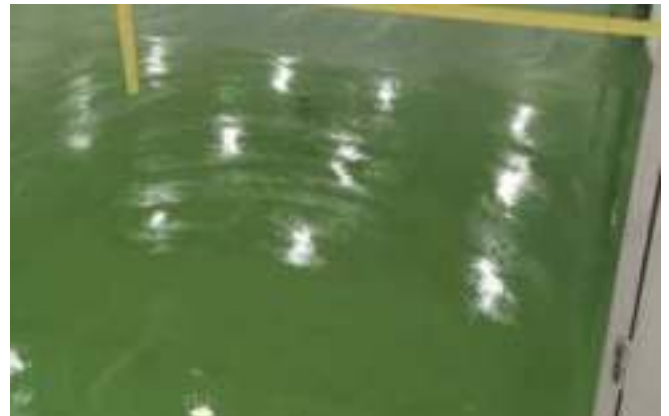
**Epoxy Transparent  
Clear Natural Gloss  
System**



**Mortar + PU MS for  
Loading Bay**



**PU MS Semi-Gloss System**



**PU MS 3mm System**



**Epoxy Primer + PU MS Topcoat 3mm for  
Outdoor & Indoor**



# Floor Coating

## Floor Coating with Many Different System



**Epoxy Primer + PU MS Topcoat  
3mm for Food Industry**



**Epoxy Filler + Primer for  
Broken Floor**



**Epoxy Primer + PU Topcoat +  
Line for Basket Ball Court**



**Mortal Epoxy Water Proofing  
Primer 5mm + PU MS Topcoat  
3mm for Sony Factory**



**Epoxy Primer + PU MS Topcoat  
+ Line for Indoor Sport Court**



**Process to Repair Cracked Floor**

# Floor Coating

## PU MF UV Flooring System (Toyota 4s Workshop)





# Anti-Stick Coating

## Light Pole



**Clearcoat AS200 System for Light Pole**



**Clearcoat AS200 System MBSA Traffic Pole**



**Clearcoat AS200 System MBSA Traffic Pole**

## Anti-Stick Coating Light Pole



**Galvanize Coating CG System for Light Pole**

## Anti-Stick Coating Feeder Pillar



**Majlis Perbandaran  
Sepang  
(Clearcoat AS200)**



**Majlis Perbandaran  
Sepang  
(Gelcoat AS600)**





# Anti-Stick Coating Feeder Pillar



**MBSA  
(Gelcoat AS600)**



**MBSJ  
(Gelcoat AS600)**



**MBSJ  
(Clearcoat AS200)**



**DBKL  
(Gelcoat AS600)**





# Anti-Stick Coating Feeder Pillar



**MPKJ  
(Gelcoat AS600)**



**MPKS  
(Clearcoat AS200)**



**MPAJ  
(Clearcoat AS200)**



**MPKlang  
(Gelcoat AS600)**



# Anti-Stick Coating Feeder Pillar



**Tenaga Nasional  
(Clearcoat AS200)**



**Tenaga Nasional  
(Gelcoat AS600)**



**MBPJ  
(Clearcoat AS200)**



**JKR  
(Clearcoat AS200)**



**MPPD  
(Clearcoat AS200)**

## **Clients List :**

- TNB
- DBKL
- MBSJ
- MPKJ
- MBPJ
- MBSA
- MPKS
- MPKlang
- MP Ampang
- MP Sepang
- MP Selayang
- JKR
- Gamuda
- IOI Properties



# Painting Service IOI City Farm Project



# Painting Service

## Wall Painting





# Coating Service

## Oil Tank





# Coating Service Waterproofing



# Coating Service Waterproofing Toilet



# Coating Service

## Roof Head Reflection





## Coating Service

### Roof Coating



## Coating Service

### Roof Ceiling Paint



# Coating Service

## UV Outdoor Floor



Coating Service  
Marble Granite





Spray Service  
Powdercoated Aluminium



# Spray Service

## Stainless Steel (MITEC)



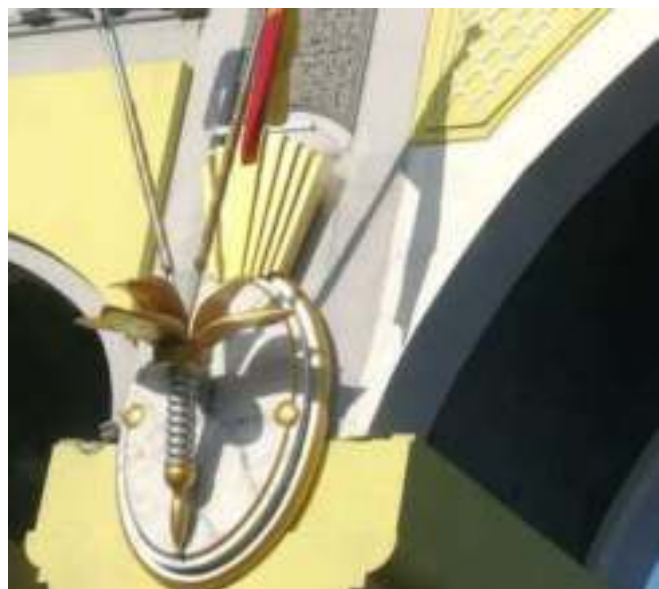


Spray Service  
Stainless Steel (MITEC)





# Spray Service Landmark



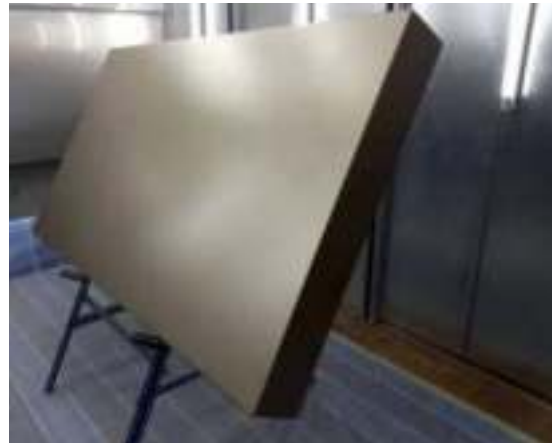


# Heavy Duty Coating Work Sand Blasting & Marine Paint system



# Spray Service

## Aluminium Substract





## Spray Service

### Electronic Aluminium Casing



**Before**



**After**



**After**



# Spray Service Glass



# Spray Service Commercial Vehicle



UMobile  
Vehicle



Ninja Van  
Vehicle



DHL  
Vehicle



JNT  
Vehicle



## VAN UITM



Before



After





## Spray Service

### VAN University of Cyberjaya)



## Spray Service

### BUS University of Cyberjaya)





# Spray Service Train (Locomotive)



Spray Service  
Electronic Casing



Conducted Coating



Spray Service  
Machine Generator  
(Hartalega NGC Sepang)



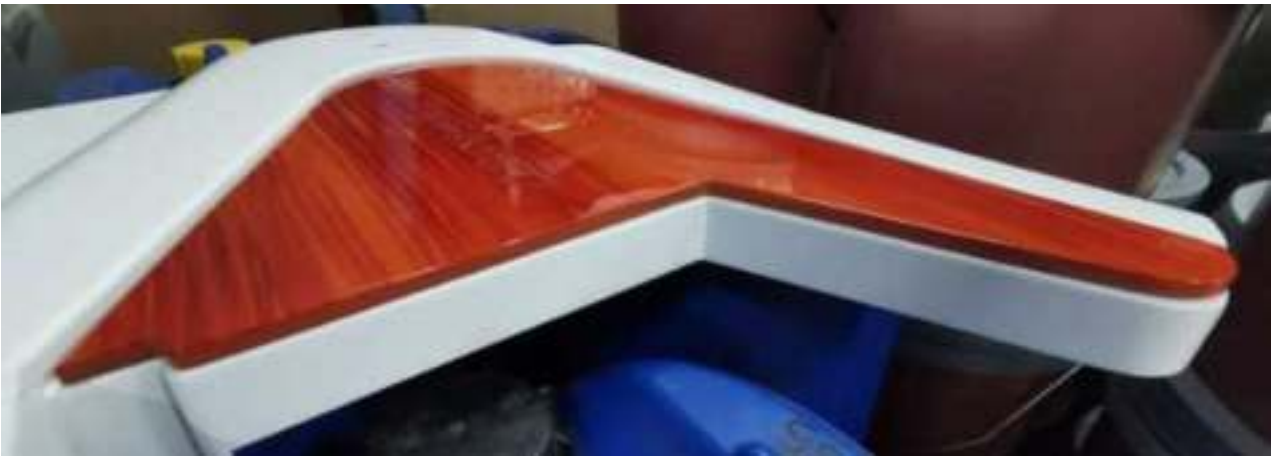
# Spray Service

## Coffee Machine LA MARSA





# Spray Service Coffee Machine





# Spray Service Coffee Machine



# Spray Service

## Satellite Phone Casing



# Spray Service

## PVC Celuka





# Spray Service

## PVC Celuka



# Spray Service

## Chroming Hyper Silver



# Spray Service

## Leather



**Before**



**After**



# Spray Service Fiberglass



# Spray Service Furniture Wood



# Spray Service

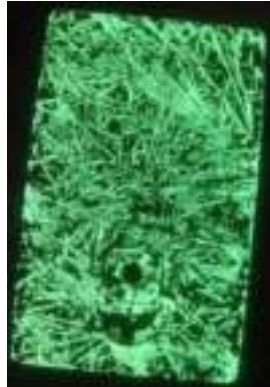
## Stainless Steel





# Spray Service

## Casing



# Paint Coating Galvanized Steel





Spray Service  
Electronic Casing



Before



After



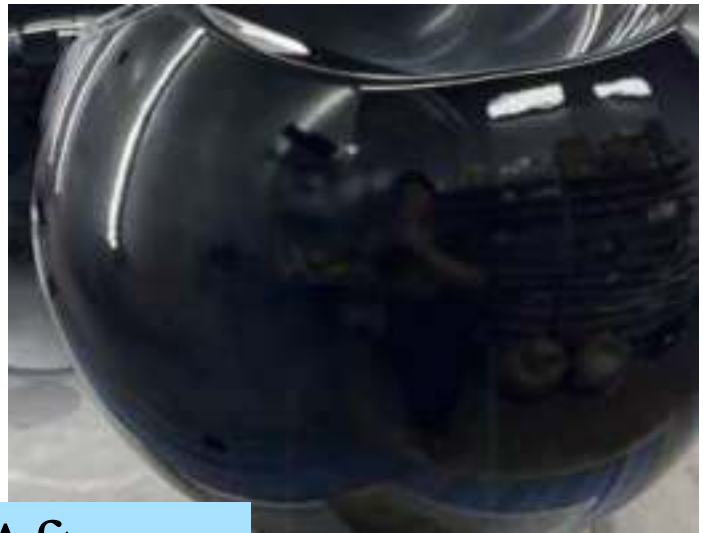


# Spray Service

Spray repaint Out door garden Sit



Before



After



# Distribution & Retail



**2K Auto Clear**



**2K Auto Paint**



**Industry Paint**



**Tarpaulin Colorants**



**1K & 2K Primer**



**2K Tinter**



**SLE Epoxy**



**1K Primer**



**2K Thinner**



**PU Clear Floor Coating**

# 2 Years Top Sales Award for Car Paint



← Top Products **TOP 1**

**Car Paint**  
Quality product with highest monthly sales

**1** **BUY 10 FREE 1**



2K Clear Auto Car Paint Slow Dry 2:1 D60 Medium High Solid Premium High Gloss Clear CAR...

Monthly Sales: 52

RM19.00

★★★★☆ 4.9/5 (546 Reviews)

← Top Products **TOP 6**

**6**



2K Clear 4:1 Fast Dry D30 High Gloss Auto Car Touch Up Paint Easy Polish 1 Liter set CARLOU...


Monthly Sales: 29

RM10.00

★★★★☆ 5/5 (184 Reviews)

← Top Products **TOP 8**

**8**



[Buy 5set Free1set] 2K Auto Clear High Solid D80 Slow Dry 2:1 High Build Mirror Gloss 1.3L Set...

Monthly Sales: 19

RM22.00

★★★★☆ 4.9/5 (108 Reviews)



# Colorants

## Tarpaulin Advertisement Printing Colorants



# Colorants

## Tarpaulin Advertisement Printing Colorants



# Schedule Waste Management

- SW204** Sludges containing one or several metals including chromium, copper, nickel, zinc, lead, cadmium, aluminium, tin, vanadium and beryllium
- SW206** Spent inorganic acids
- SW305** Spent lubricating oil
- SW306** Spent hydraulic oil
- SW307** Spent mineral oil-water emulsion
- SW322** Waste of non-halogenated organic solvents
- SW323** Waste of halogenated organic solvents
- SW409** Disposed containers, bags or equipment contaminated with chemicals, pesticides, mineral oil or scheduled wastes
- SW410** Rags, plastics, papers or filters contaminated with scheduled wastes
- SW416** Sludged of inks, paints, pigments, lacquer, dye or varnish
- SW417** Waste of inks, paints, pigments, lacquer, dye or varnish
- SW418** Discarded of off-specification inks, paints, pigments, lacquer, dye, or varnish products containing organic solvent



# Schedule Waste Management

