



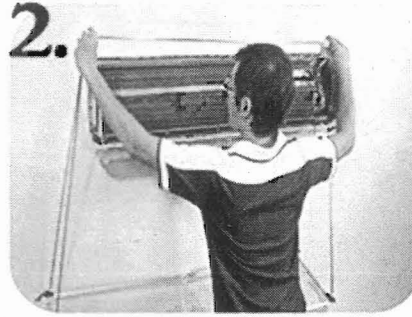
King Pump

King pump Full Cover Washing Tools

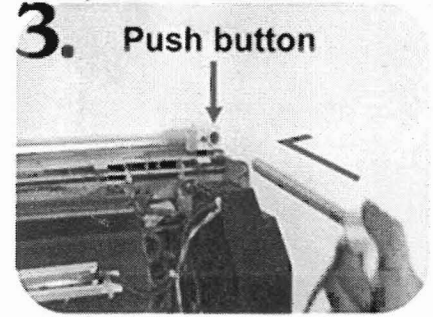
Second Generation Open type cleaning cover + closed type cleaning cover (Accessory)



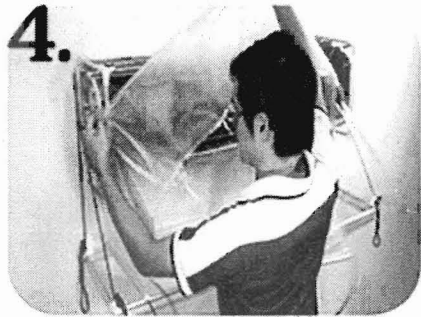
1. First open the Open type cleaning cover and make sure the white connector in the middle are connected and fixed.



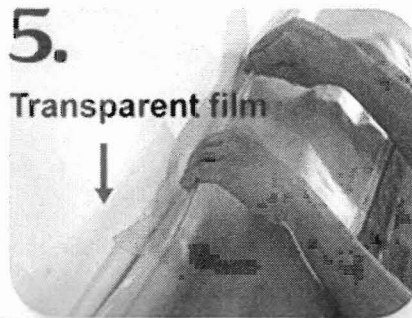
2. Use both hands to pull up the bracket and hanging above the split type air conditioner on both corners, must insert and securely fix the plastic board (Push button) in the back of the air conditioner.



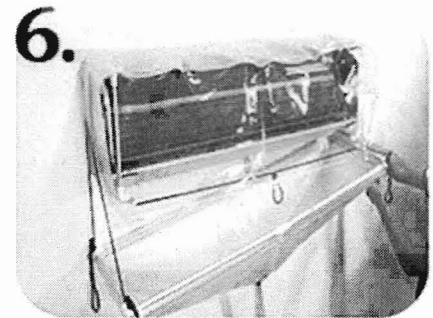
3. Push in "C shaped support bracket" of closed type cleaning cover to the hole on the plastic board, if inserted properly you will hear "Ka" sound.



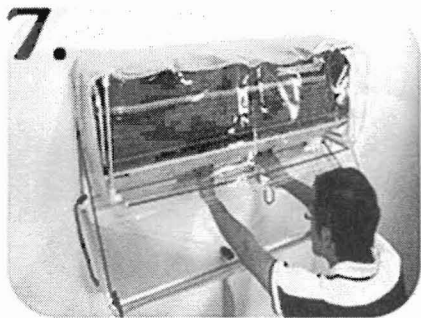
4. Place the closed type cleaning cover on C shaped support bracket, insert those two small transparent films on both side in the back of the air conditioner.



5. Insert the big size of transparent film in the back of the air conditioner and tighten the cleaning cover by adjust the rope stopper.



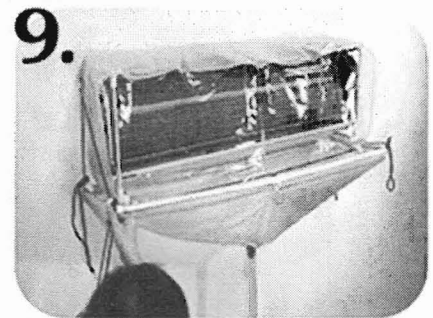
6. Pull up open type cleaning cover's two rope stoppers that is against the wall until it's near the bottom of the air conditioner on both side.



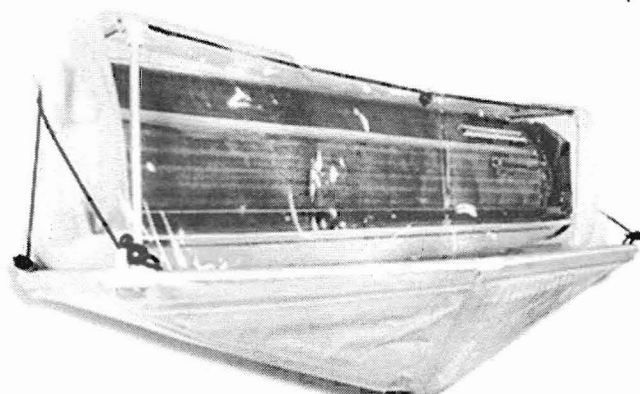
7. Must remember to leave a gap for you to insert the transparent film in the back of the air conditioner.



8. Insert the transparent film to the lower back of the air conditioner.



9. Finally pull up rope stoppers around the four corners to the same level to finish the installation.



1.2.6.7.8.9.

Open type cleaning cover steps + Closed type cleaning cover (All the steps)

