



CULMI AIR-COND & REFRIGERATION PARTS SUPPLY SDN BHD
(BEH H/P : 012-3111 367)

KING PUMP CLEANING COVER FOR WALL MOUNTED & CASSETTE TYPE





CULMI AIR-COND & REFRIGERATION PARTS SUPPLY SDN BHD (BEH H/P : 012-3111 367)

Full Cover Washing Tool

Super-quickly assembled in 40 seconds.

- Small volume and easily taken.
- Specially washing tool and Popularly international.

**KING PUMP CLOSED TYPE DESIGN CLEANING COVER FOR
WALL MOUNTED SPLIT TYPE AIR-COND**



**KING PUMP OPEN TYPE OF CLEANING COVER FOR WALL
MOUNTED SPLIT TYPE AIR-COND**



CULMI AIR-COND & REFRIGERATION PARTS SUPPLY SDN BHD (BEH H/P : 012-3111 367)



Extremely light only 1.35kg.

- Use aluminium alloy for frame which is light, Acid and alkali resistance and impact resistance.



Fast adjustable, exactly control the assembling height

- Button type cord-fastener and only press lightly you can adjust the suitable place quickly; it can immediately fix the height once you release.



Quickly assemble upper spring supports

- Easily step and can be fixed right now.



Integrative drain-pipe

- Effectively avoid tube outshape, caused by taken in and can not drain off water which will be with better wndurance.



Acid and alkali resistance, Inverted triangle

- Easily step and can be fixed right now.



Easily taken and also more convenient for ridding

- Light, small volume and easily taken.



More protection with transparent film

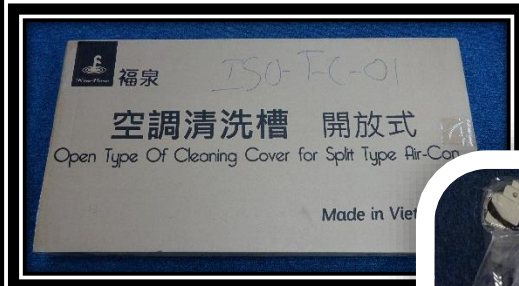
- Can effectively avoid impurity on the wall, floor and funitures.



CULMI AIR-COND & REFRIGERATION PARTS SUPPLY SDN BHD (BEH H/P : 012-3111 367)

King Pump Full Cover (Open Type + Closed Type) For Wall Mounted Split Air-Cond Application

KING PUMP OPEN TYPE OF CLEANING COVER FOR WALL MOUNTED SPLIT TYPE AIR-COND



KING PUMP CLOSED TYPE DESIGN CLEANING COVER FOR WALL MOUNTED SPLIT TYPE AIR-COND



King pump Full Cover Washing Tools

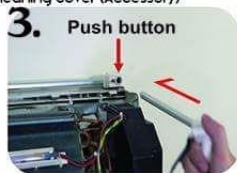
Second Generation Open type cleaning cover + closed type cleaning cover (Accessory)



1. First open the Open type cleaning cover and make sure the white connector in the middle are connected and fixed.



2. Use both hands to pull up the bracket and hanging above the split type air conditioner on both corners, must insert and securely fix the plastic board (Push button) in the back of the air conditioner.



3. Push in "C shaped support bracket" of closed type cleaning cover to the hole on the plastic board, if inserted properly you will hear "Ka" sound.



4. Place the closed type cleaning cover on C shaped support bracket, insert those two small transparent films on both side in the back of the air conditioner.



5. Insert the big size of transparent film in the back of the air conditioner and tighten the cleaning cover by adjust the rope stopper.



6. Pull up open type cleaning cover's two rope stoppers that is against the wall until it's near the bottom of the air conditioner on both side.



7. Must remember to leave a gap for you to insert the transparent film in the back of the air conditioner.



8. Insert the transparent film to the lower back of the air conditioner.



9. Finally pull up rope stoppers around the four corners to the same level to finish the installation.

1.2.6.7.8.9.

Open type cleaning cover steps + Closed type cleaning cover (All the steps)

