

IJN DCS Plant Kuala Lumpur (OLD)

Bacharach Gas Monitor Installation Layout With Product Identification



Sampling Point
(Leak Detection Point)



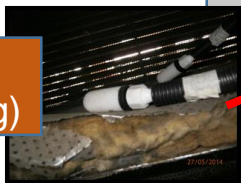
7 Programmed R134A

8 Programmed R22



Internal Strobe &
Buzzer Light

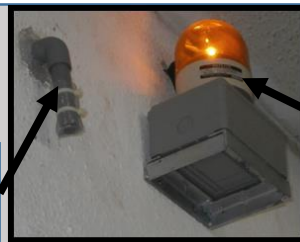
Exhaust
(Inside Ducting)



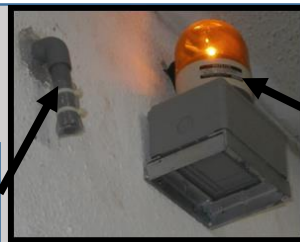
Charcoal Filter



Exhaust
Line



External
Strobe Light

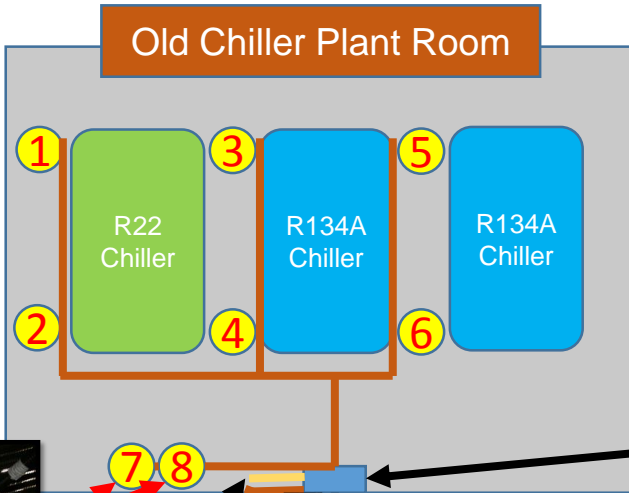


MZ-RD Remote
Display



Maintenance
Room

New Chiller Plant Room



Bacharach Gas Monitor
HGM-MZ-8-Zone



BELDEN

Twisted Cable
(8760 AWG 18)

IJN DCS Plant Kuala Lumpur (NEW)

Bacharach Gas Monitor Installation Layout With Product Identification

 Sampling Point
(Leak Detection Point)



Charcoal Filter

Exhaust Line



Exhaust
(Inside Ducting)



Internal Strobe &
Buzzer Light



Bacharach Gas Monitor
HGM-MZ-4-Zone



External
Strobe Light

Maintenance
Room

New Chiller Plant Room

4

1

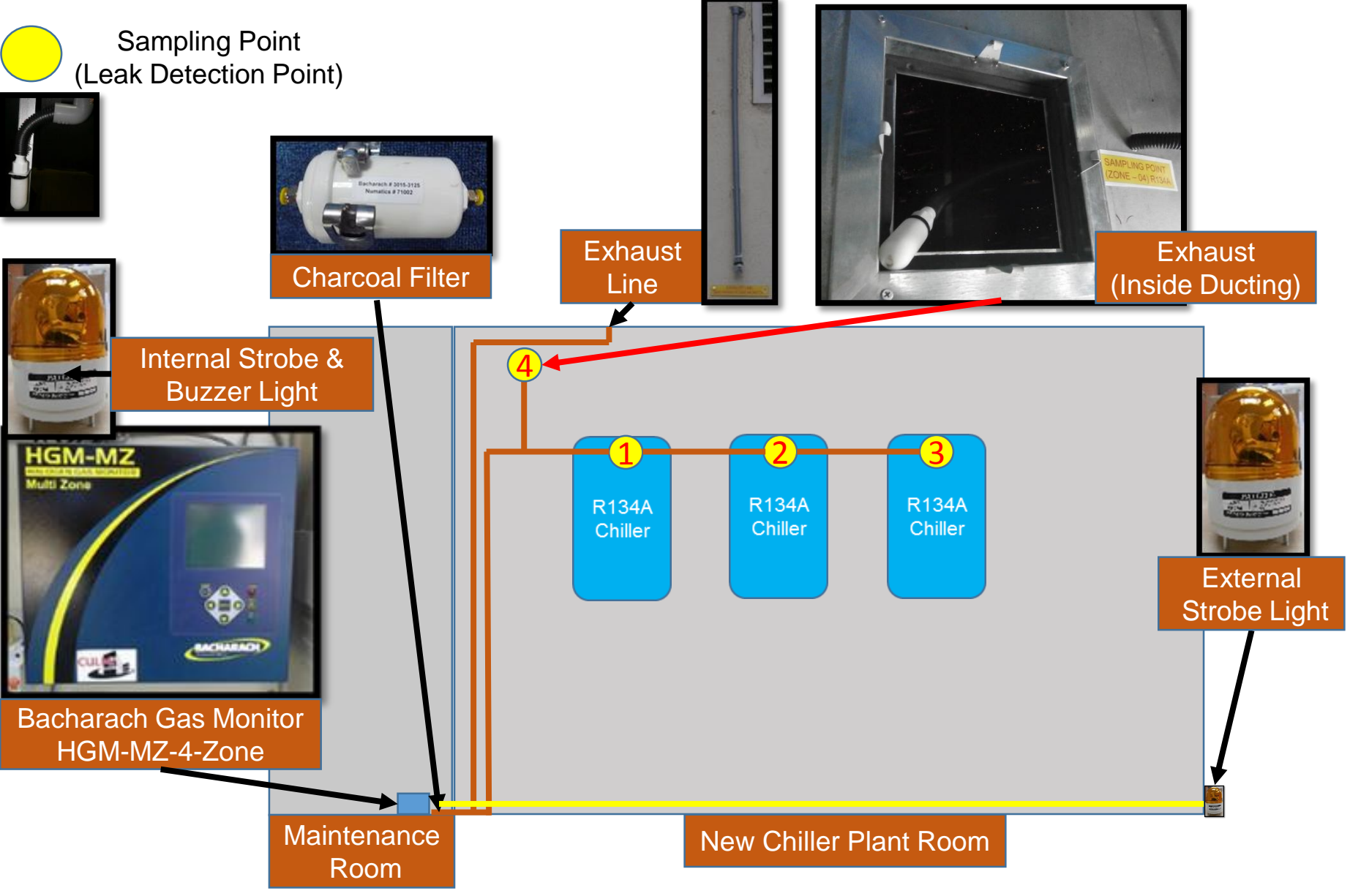
R134A
Chiller

2

R134A
Chiller

3

R134A
Chiller



IJN Chiller Plant Room Layout With Refrigerant Gas Monitor Installation C/W Accessories

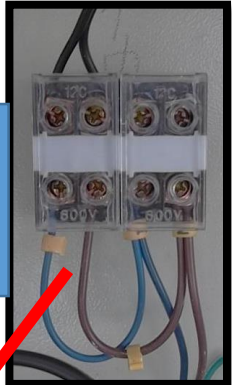
Panel Board Fabrication with Gas Monitor and Electrical Accessories Installation



Strobe Light (IP55)
(For HGM-MZ – 1-set & MZ-RD)

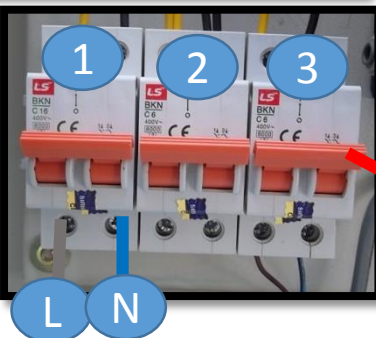
600mm x 600mm x 175mm
Wall Mounted Metal Box
(For HGM-MZ)

Terminal For
Visual Alarm
Connection



PVC Outlet For PVC Pipe Connection

- 1) MCB (LS) – 16A (Main Incoming Supply)
- 2) MCB (LS) – 6A (Stand By For Future)
- 3) MCB (LS) – 6A (For Gas Monitor)



Power Supply Incoming
(230V / 1Ph / 50 Hz)

