

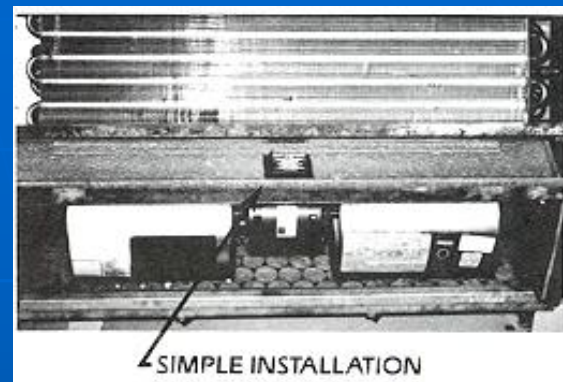
CONDENSATE DRAINPAN CONDITIONER WITH ANTI-CLOG # 1



Product Name:
CDC Anti-Clog # 1

- Sizes:**
- 1) FT/C (3/4 oz) up to 5 tons
 - 2) Slim Strip (3/4 oz) up to 5 tons
 - 3) AT/C (2 1/8 oz) up to 15 tons
 - 4) The Brick (6 oz) up to 45 tons

- Controls And Prevents:**
- Slime Build-Up * Harmful Bacteria Growth
 - Damaging Drainpan Overflows * Musty Odors



WHY is the Condensate Drainpan Conditioner needed?

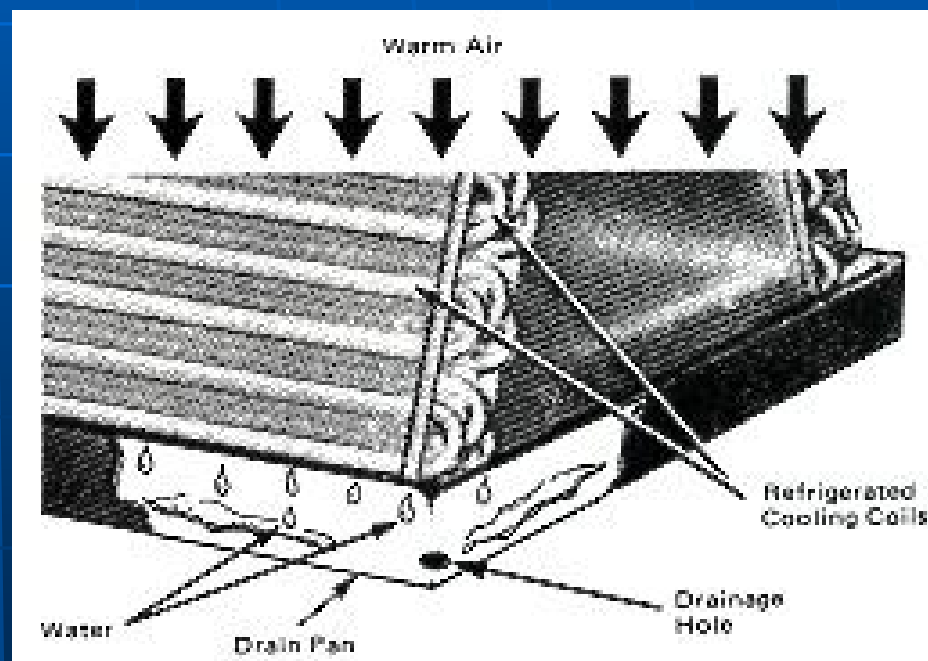
1. CONDENSATION

Cooling equipment produces cold air by passing warm air over cooling coils. This cooling action causes condensate (water droplets) to form and drip off the cooling coils, similar to the droplets formed on the glass of a cool drink on a hot day!

Have you ever seen water dripping out of a window air conditioner? This is a common example of condensation.

2. DRAINAGE

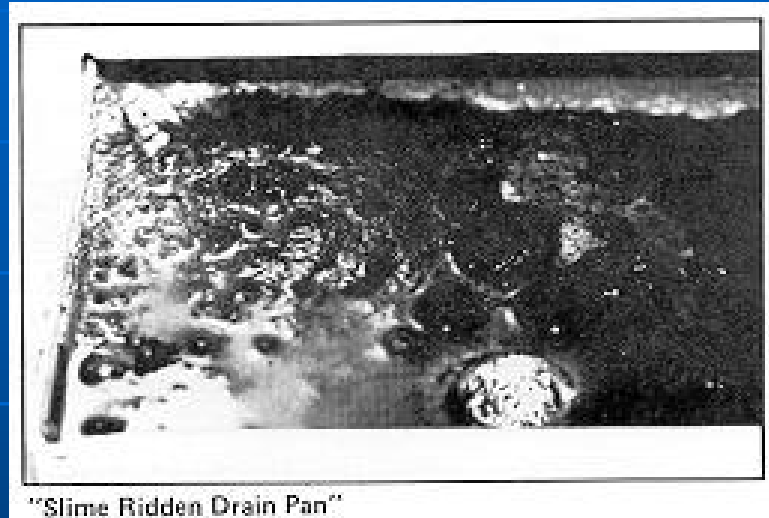
In large commercial cooling equipment, condensate cannot be allowed to drip out onto passersby or other objects. Therefore the condensate must be collected in a drain pan inside the unit. When enough droplets collect, the condensate begins flowing to a drain hole. IT IS HERE IN THE DRAIN PAN THAT POTENTIAL TROUBLE BEGINS!



WHY is the Condensate Drainpan Conditioner needed?

3. BACTERIA

Bacteria, naturally present in water including condensate, produce "SLIME" as a waste product.



ACCUMULATIONS OF SLIME CAN:

- Block the drain hole, causing the drain pan to overflow, resulting in costly water damage.
- Provide an ideal breeding ground for harmful bacteria including those causing the common cold, asthma, fatigue, headaches, flu, allergies and the deadly Legionnaire's Disease.

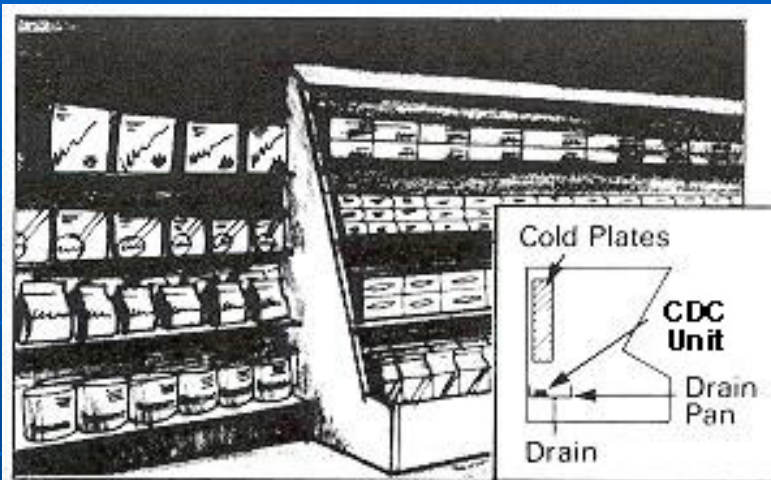
**The Condensate Drainpan Conditioner Kills
Slime and Disease-Producing Bacteria!**

CONDENSATE DRAINPAN CONDITIONER PLACEMENT

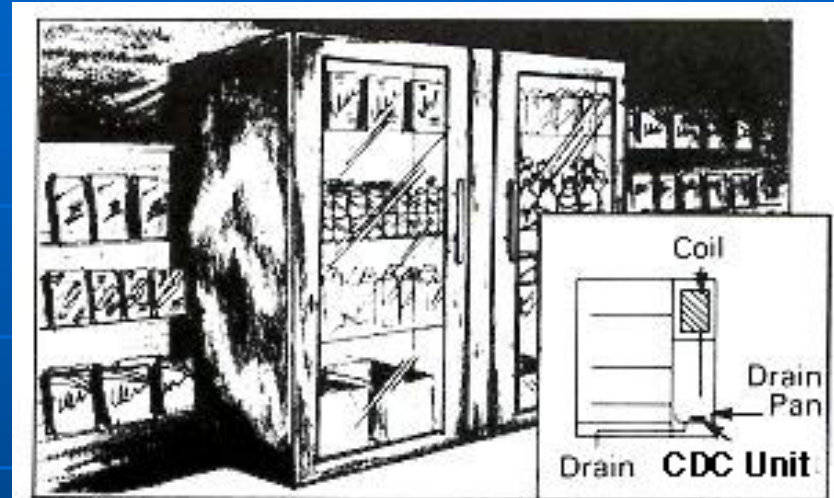
FT/C: FOR EQUIPMENT UP TO 5 TONS.

AT/C: FOR EQUIPMENT OVER 5 AND UP TO 15 TONS. NOTE: FOR LARGER EQUIPMENT USE MULTIPLE UNITS.

REFRIGERATION:



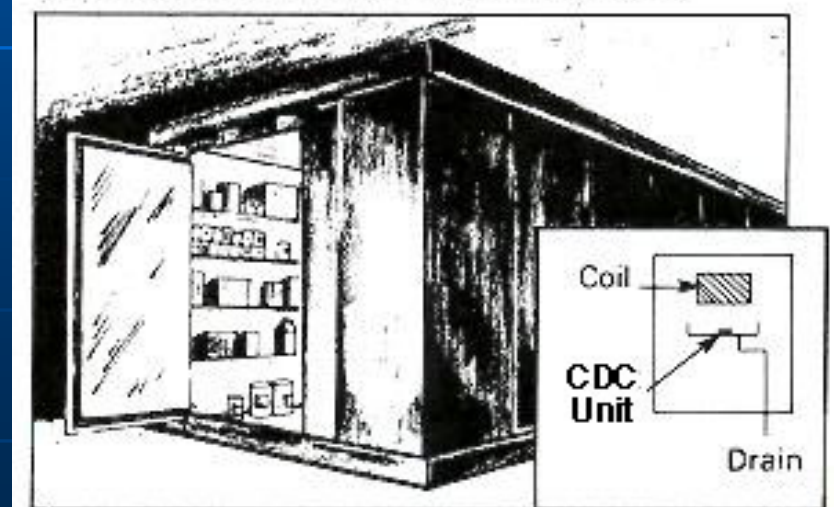
Display Cases



Beverage And Grocery Reach-In Coolers



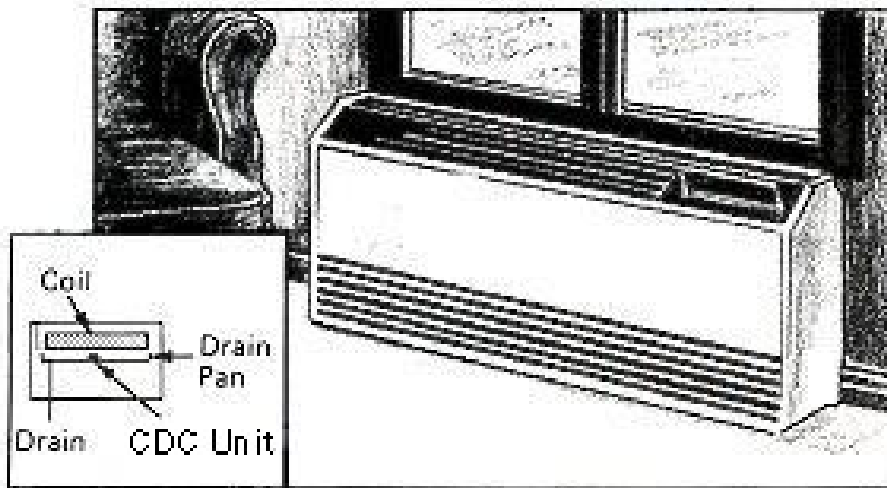
Refrigerated Vending Machines



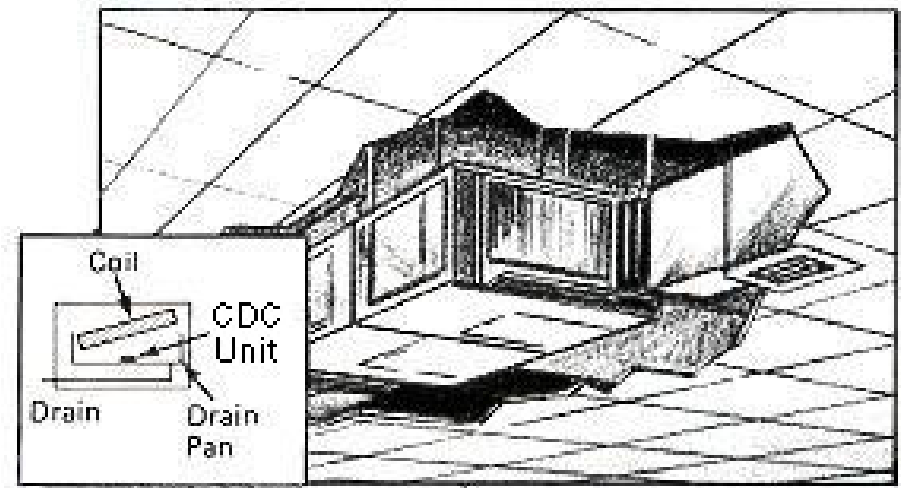
Cool And Cold Storage Walk-Ins

CONDENSATE DRAINPAN CONDITIONER PLACEMENT

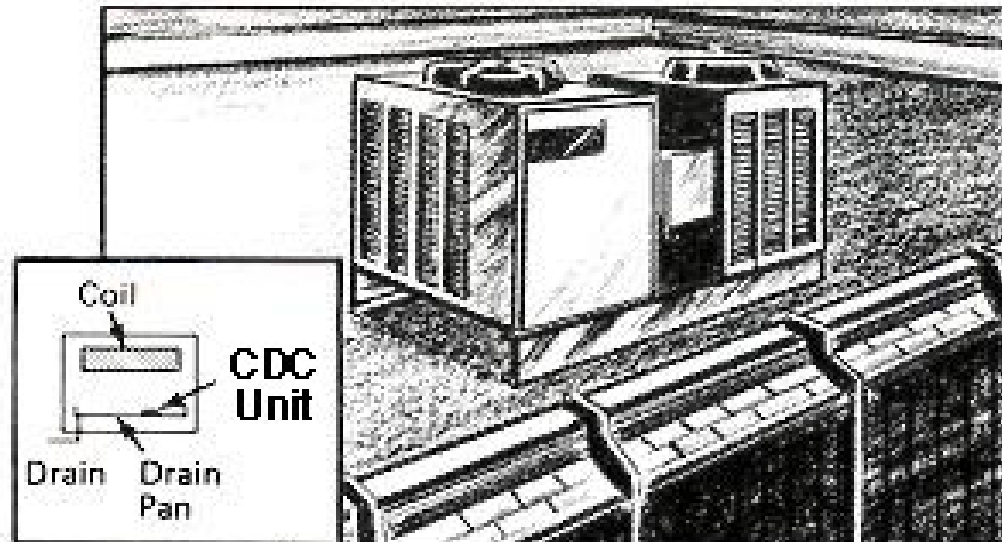
AIR CONDITIONING



Fan Coil Units



Ceiling Units



Roof Top Units

IMPORTANT:

DO NOT USE in Humidifiers, Humidifier Sections In Air Conditioning Systems Or Evaporative Coolers IF Heat Lamps Sit Directly Over Or Near Drain Pan Where The Condensate Drainpan Conditioner Has Been Installed.

Not for use in applications exceeding 150 degrees F.