

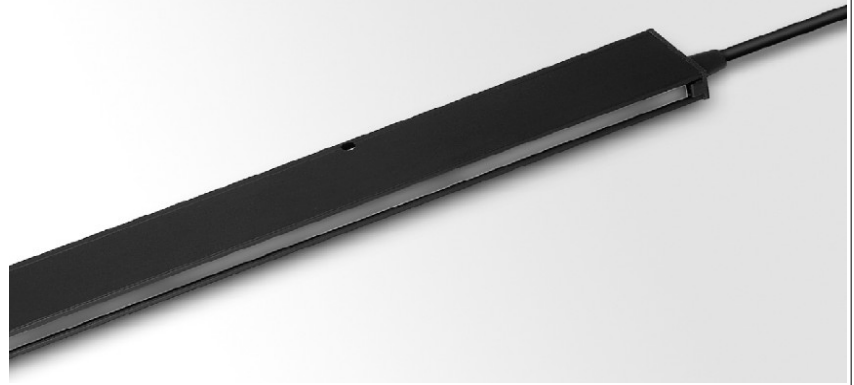
IOS SERIES LIGHT CURTAIN



TYPE: IOS-2000-8M-1

Description

- *1-8 metre sensing range
- *96 crossed beams
- *Active height of 1817 mm
- *Detector length of 2000 mm
- *Plug type connection
- *Easy Alignment
- *Slim line design (10 x 24.5 mm)
- *Power, output and signal indicators
- *External power supply
- *Buzzer function is provided
- *Operated by MCU Microchip.



The IOS light curtain system consists of a transmitter detector, and a receiver detector, which are to be positioned opposite of each other.

The detectors are housed in a aluminium profile available in a slim line design (10 x 24.5 mm).

Installation is easy and straight forward.

It is widely used in shutter doors, industrial doors, gates and elevator doors for protection purpose.

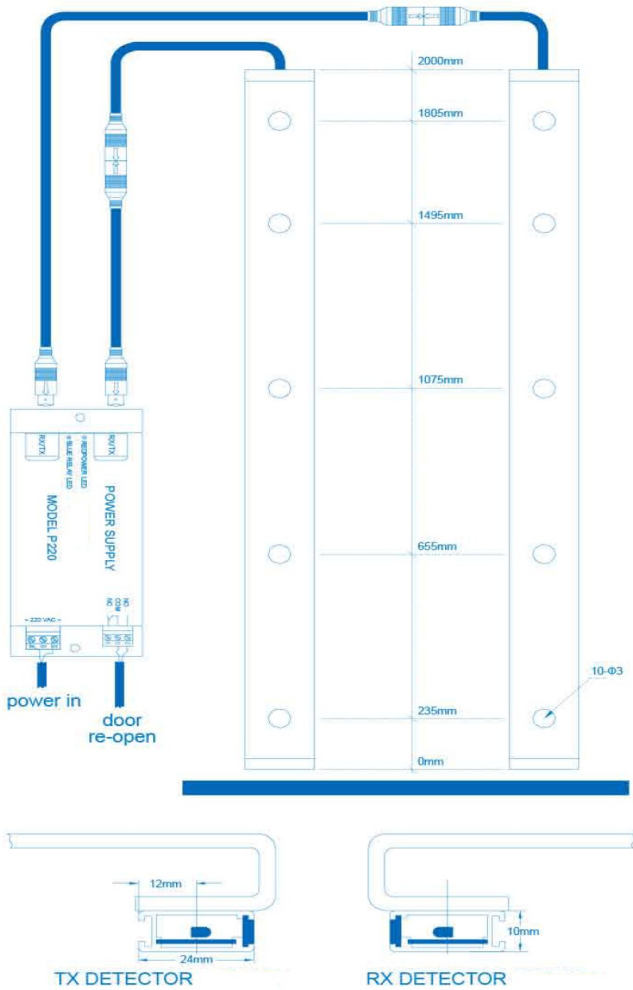
Technical Data

Power input	230Vac
Working principle	Opposed mode: Consists of transmitter & receiver
Number of channels	17
Channel spacing	118mm
Highest beam	1840mm
Lowest beam	23mm
Number of crossed beams	96
Sensing range	0-8000mm
Output signal	1C relay
Vertical displacement at 0mm	+/- 20mm
Horizontal displacement at 0mm	+/- 3mm
Angular displacement at 0mm	+/- 10degrees
Cable lifespan	20million movements
Light immunity	<100000LUX
EMC compliance	Emission to EN12015, Immunity to EN12016
Operating temperature	-20°C ~ +65°C
Dimension	10mm(thickness) x 24.5mm(Width) x 2000mm(height)
IP Rating	IP54
Response time	60ms
Timeout function	15s upto 3 non-adjacent channels
Power Indicator	Provided
Output indicator	Provided
Connection method	5meter wire with connector cable
Housing material	Aluminium

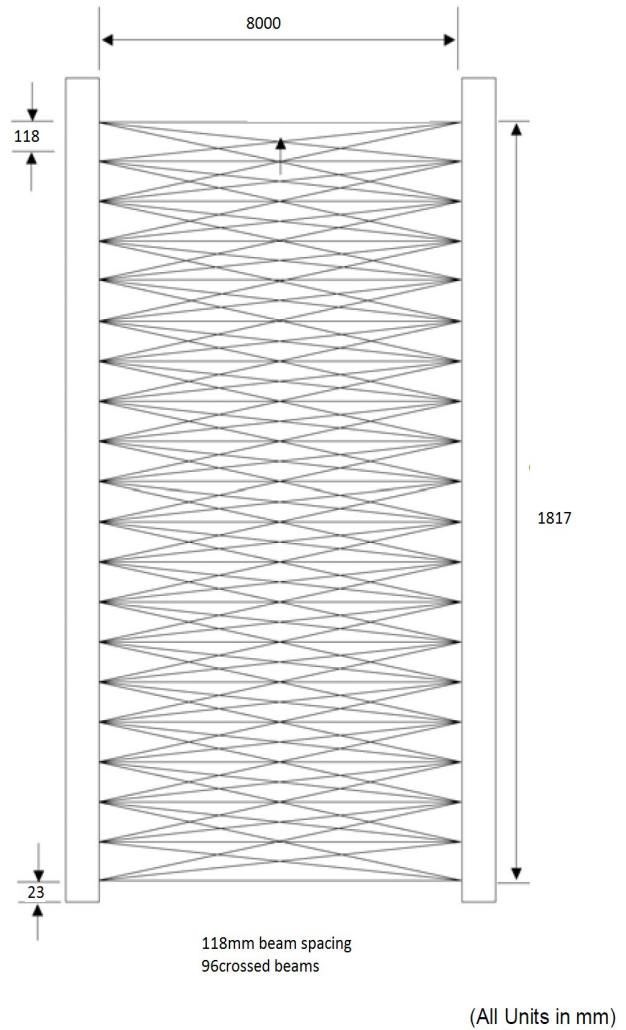
IOS SERIES LIGHT CURTAIN



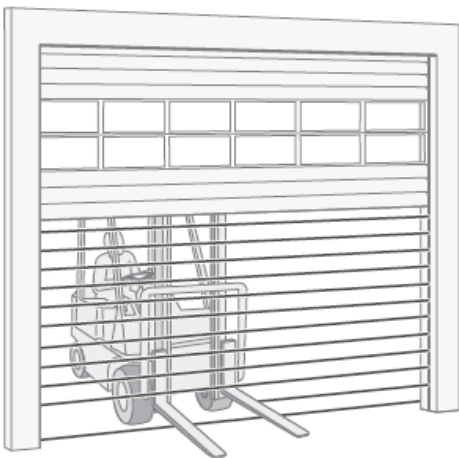
Dimension:



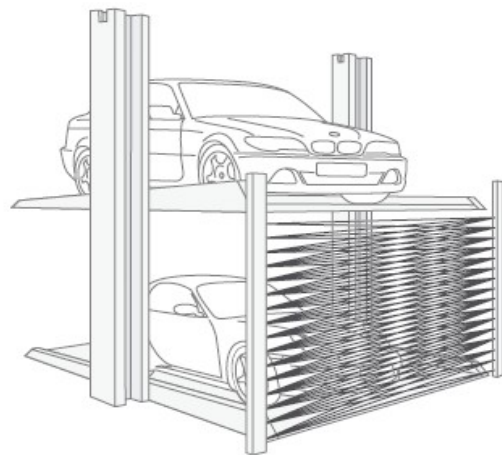
Beam Pattern:



Application:



INDUSTRIAL DOOR
Vehicle and pedestrian detection



VEHICLE STACKING
Vehicle positioning