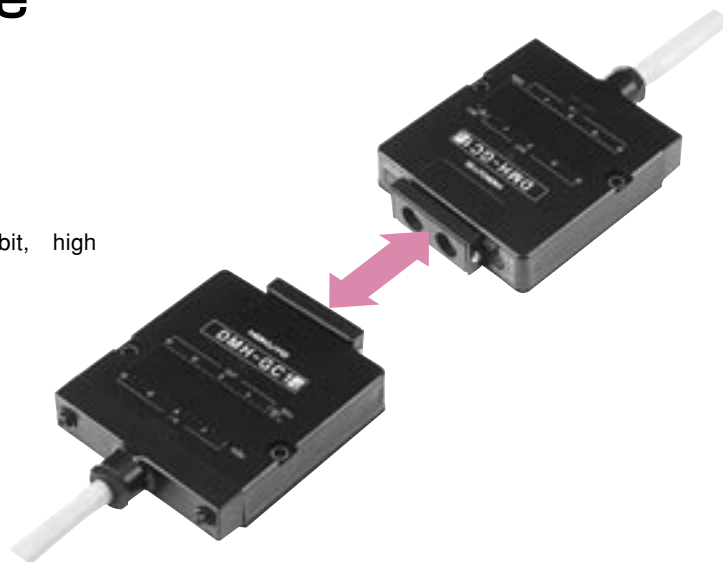


# Optical Data Transmission Device

## DMH-GC1-L

DMH-GC/HC is a data transmission device with 16-bit, high speed and long distance type(15m).

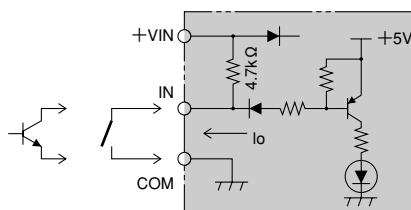


### Specifications

Type	Parallel type
Model	DMH-GC1-L
Direction	Head-on
Transmission distance	0 to 15m
Directional angle	$\pm 2^\circ$
Transmission capacity	16BIT
Transmission method	Half duplex two-way transmission
Transmission time	15msec or less
Modulation method	FSK modulation
Detection method	Bit reverse comparing system
Power source	18V to 30VDC (ripple 10% or less)
Current consumption	150mA or less
Ambient illuminance	10,000lux or less
Ambient temperature/humidity	-10°C to +50°C, 85%RH or less
Connection	Lead wire (0.2mm <sup>2</sup> 40 cores shield wire in 2m)
Protective structure	IP64 (IEC Standard)
Case material	Cover: Polycarbonate, Base/cable cover: ABS resin
Weight	Approx. 400g(including 2m cable)

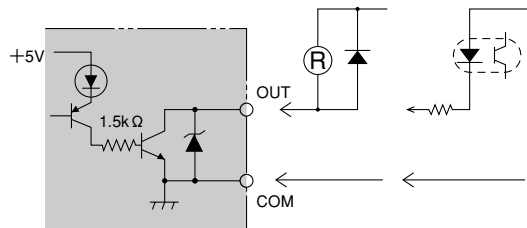
### Input/Output circuit

#### Input section



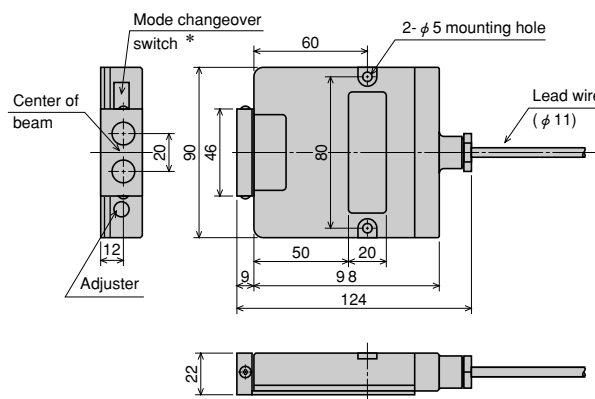
Flow current ( $I_o$ ) when ON: approx. 5mA (When 24VDC)  
ON voltage: 2V or less, OFF voltage: 8V or more

#### Output section



NPN open-collector output  
35VDC 50mA Residual voltage 0.9V or less

### External dimensions



\*Mode changeover switch: If one is set to T side (transmission priority mode), other one have to be set to R side (reception priority mode).

☆Connection is the same as standard type. See Page.